



EDUCATION AT THE ALBANY MUSEUM 2008



A GUIDE TO THE EDUCATION DEPARTMENT

ALBANY MUSEUM • SOMERSET STREET • GRAHAMSTOWN • SOUTH AFRICA

This brochure was compiled by the Education Department of the Albany Museum, Grahamstown, South Africa. If you would like to know more about our educational lessons and outreach projects,

please contact: Mrs Marijke Lewis or Ms Nozipho Madinda at

Tel: (046) 6222312 • Fax (046) 6222398 or E-mail: m.cosser-lewis@ru.ac.za

*Please note that no part of this publication can be reproduced without prior consent from the Albany Museum's Education Department and that copyright law applies to all of the content matter herein.



THE NEED TO KNOW



Our Vision:

To be a Museum that is an integral part of our community, contributing to the process of nation-building through nurturing a society that is aware of the value of its past and is constructively engaged in the present in order to create a better future.

Our Mission:

To fulfill this vision the Museum seeks to:

- Develop transformed and representative collections reflecting our social and natural environment with particular reference to the Eastern Cape;
- Preserve and hold these collections in trust for the Nation;
- Enrich our knowledge, understanding and appreciation of the collections through research;
- Assert that education for all is integral to all our activities and central to our public service role;
- Render the collections accessible and usable for all.

Aims of the Education Department:

By providing interesting and informative educational programmes in line with outcomes based education (OBE), the Education Department at the Albany Museum aims to foster understanding, care and respect for all forms of natural, scientific and cultural life in South Africa and throughout the world.

- See-Hear-Do the year-round programmes for learners at all grade levels. These programmes are outcomes-based and augment the learning areas specified in school curriculae.
- Focus Weeks are programmes on special themes chosen and facilitated for one to two weeks only.

History:

The Albany Museum – the second oldest Museum in South Africa – was founded in 1855. It was begun in a small room in a building next to the present Grahamstown municipal library. In the 150 years since its inception, the Museum now includes: The Natural Science Museum, the History Museum, the Observatory Museum, the Provost, Fort Selwyn buildings and the Drostdy Arch.

The Education department of the Museum served the learning community of Grahamstown and its districts in a similarly long and fruitful career: In 1932, Anna Rothman pioneered the Department's first teaching boxes. These comprised a museum in miniature: items being displayed in easily transportable boxes and accompanied with a full set of teaching notes. These teaching boxes are still being borrowed by facilitators of the twenty-first century!

In 2008 – there is no stopping us! Our service base includes some 10 000 - 16 000 learners attending museum lessons each year, a Mobile Service and various outreach projects to formerly disadvantaged communities.



COMING FROM FAR



Museum School:

Out-of-town youngsters benefit from a full morning's programmes of rotated lessons combining several lesson topics. These could include:

- A General Wow! tour of Museum Highlights;
- "Dinosaurs" or
- the Earth and Space Gallery, amongst others.

Our Mobile Service:

The Education Department facilitates a Mobile Museum Service where our Museum teacher, accompanied by lesson materials and loan boxes with objects, visits school communities unable to reach the Museum.

We have a new staff member:

In December 2007, we welcomed Ms Nosipho Madinda (a former teacher at a local school) to run our Mobile Service. She will also be involved with our teaching programmes at the Museum itself.

Museum Loan Service:

•This service is available to facilitators and learners alike. Boxes of fixed museum objects containing objects from both the social and natural sciences, may be borrowed at the user's own leisure. Boxes may be loaned for a maximum period of 6 weeks. Specimens included in teaching boxes, i.e. mounted specimens in glass-fronted boxes: amaXhosa lifestyle (objects of), arthropoda, bats, birds – all sorts, birds – beaks and feet, bird migration, bats, bees, crabs, ducks, earthworms, ferns, fungi, geology – rock samples, gymnosperms, leather, locusts, leaves – compound/simple, mammal dentition, molluscs, tea plantation, nitrogen cycle, shells and seashore finds, Settlers (1820), silkworms, shoe making, spiders, ticks, tobacco and wool.

•Specimens – free standing, mounted: (these may be viewed at the Museum, but may not be taken out) Albatross, badgers – all sorts, birds – all sorts, bat, bush baby, buzzard – stepped jackal, barn owl, cat – black footed/small spotted/wild, crane - crowned, cane rat, small spotted, dentition – mammal, duiker, ducks – all sorts, darter, dassie, dinosaurs, drongo – fork tailed, doves and pigeons of the eastern Cape, buzzard – Turkey, eagles, "touchy-feely items, i.e. scales and fur, Francolin- red necked, genets, goshawk – African, guinea fowl, Egyptian goose, hare – all sorts, hamerkop, hedgehog, insectivores, Knysna loerie, leguans, monkey, moles, mammal skulls – all sorts, mousebird, meerkat, molerat, nests – all sorts, nightjar – European, mongoose, penguins – all sorts, pigeon, polecat, plover, oriole, owls – all sorts, python skin, quail – common, robin, steenbok, springbuck, snakes – bottled/ mounted puff adder, cobra, raptors – all sorts, roller – European, tortoises – all sorts, turtle and tortoise, shell, squirrel – American grey, Shark jaw, sunbird, weavers – all sorts and woodpecker.



DISCOVERY CHANNEL TAPES



Discovery Channel Global Education Fund (DCGEF), have made educational tapes available to the Albany Museum. These tapes can, subject to a good borrower record, be borrowed by teachers. The 10-minute explanations include topics which deal with – Elephants and African Geography; Beneath, Above and Beyond the Earth; Along the Equator and Up the Nile; Ocean Habitats; Nature's Resources; "Galapagos", Serengeti, Cheetahs, Great Zimbabwe and Meerkats: A Kalahari Saga; A Journey into Antiquity – the Taj Mahal, the Pyramids of Egypt, Tutankhamun's Tomb, the Temple of Ramses; Oceans – Exploring our Oceans, Ocean Moves and Living Oceans; Electricity – basic (Electrons), Hydroelectricity and Solar and Wind Power; Wild about Animals; Genetics; Understanding Bacteria and Understanding Viruses; To Fly – from our Earth to the Stars: Understanding Flight, the Space Shuttle and Satellites; Surviving Natural Disasters – Earthquakes, Hurricanes and Typhoons, Floods; The Science of Pregnancy – The First Trimester, The second Trimester and the Third Trimester; Birth around the World; Skyscrapers: Going up; Bridges – reaching out; Dams and Dikes: standing Firm; In Introduction to Motion: Force, Mass and Motion, Actions and Reactions.

Worksheets:

Besides worksheets being available for many of our galleries and talks, there are also worksheets and suggestions available for activities accompanying the Discovery Channel tapes.

MUSEUM OPENING TIMES

Arrive anytime between 9h00 and 13h00, or from 14h00 – 17h00 with your class at the Museum. There are no classes on Saturday, except the Khanya Maths and Science club which meets from 9.00 – 11.00 am.

For Grahamstown and district and whose learners are in uniform, entrance is free. If not in uniform and from Grahamstown, there is a charge of R5 per learner. If you are from out-of-town and in uniform - a charge of R5 per head is levied.

- Look around the Museum yourself. No booking is needed and worksheets for some galleries are provided upon request.
- Book at times convenient to yourself. Please give at least 10 – 14 day's notice to notify researchers/ or facilitators.
- As the hour-long lessons are jam-packed with exciting things to see-hear-do, please try to arrive on time.
- Please inform the department of any alterations or cancellations.





BOOK FOCUS WEEK

Book for special “focus week” programmes dealing only with the themes advertised for the week/s. Please fill in a focus week form at the back of this booklet and fax it to us. Please phone nearer the time to confirm/cancel appointments! We need to know as often busy Rhodes lecturers are kept waiting for your class!

Session Times:

- Our sessions run from 9.00 – 10.00 and 11.00 – 12.00. Should you have any difficulty in fitting these times into your schedule, we will try to make adjustments.
- Most of the lessons are in English. However, isiXhosa or Afrikaans learners will gladly be accommodated.
- Your class can make use of the museum’s shaded lawns to enjoy your snacks Toilets nearby; a classroom to shelter in inclement weather.
- We greatly appreciate receiving “thank you” letters from learners. From these, we have been able to gauge the level of absorption of lessons...and it helps learners remember their manners, too!

COMING OUT OF TOWN

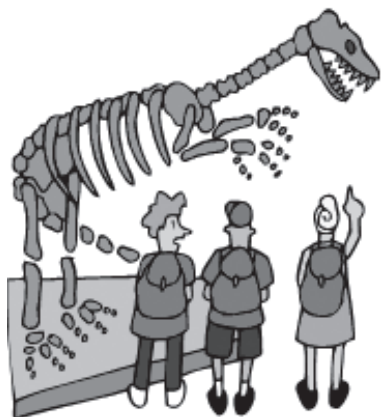


Coming from out of town? “King Pie” orders can be placed at 9.00 am to be delivered to the museum by lunch time. Phone 046 622 6562 for prior arrangements and costs. Group discounts offered.

- There is a request for at least R2 donation per child per lesson. However, if this means it prevents you from coming, we will waive any costs. No one must stay away because of money! A cheque covering this donation is welcome, made out to “The Albany Museum”. If, however, you would like to pay the normal entrance fee for your Grahamstown-based group (i.e. not pay on donation basis), then the charge is R5 per child and R8 per adult. (Note that this is applies to our Observatory Museum section; at the National Science division of our Museum it is R5 adult and R4 per child). This fee can be waived by prior arrangement with the Department.
- Grahamstown-based learners in school uniform don’t pay an entrance fee to the Observatory Museum (which is part of the Albany Museum complex) but the Observatory Museum charges all schools who wish to experience specifically the unique ‘camera obscura’ in the museum. For this there is a charge of R5 per child.
- Once-off donations:
For schools who attend Museum lessons regularly, it is greatly appreciated if the school offers a once-off per year donation to the Museum for their lessons (in which case the suggested R2 donation per child is waived). Please help us to stay open for you!



SCHOOL PROJECTS



Thank you for your encouragement in alerting your learners to this invaluable resource! In order to render these visits more useful and effective, the following guide-lines must be followed:

- Please let Museum staff know when there is a particular project on the go in your class. A quick phone-call will mean that books, pamphlets and items needed are ready for them.
- Please advise the staff of the numbers we can expect. Insufficient Seating or sharing only one book makes an unpleasant visit for both staff and learners.
- Please give clear guide-lines and instructions in allocating projects. Also, too broad topics are unhelpful both to staff and learner.
- Please direct your learner to the correct staff member:

Archaeology - Dr Johan Binneman

Anthropology - Mr Mpho Molapisi

Botany - Dr Tony Dold, Herbarium

Invertebrates-

Aquatic insects - Dr F de Moor/ Ms H James

Ichthyology - Dr Jim Cambray

Natural Science, Space, and other general enquiries - Ms Marijke Lewis /Ms Nozipho Madinda

Cultural History - Ms F Way-Jones /Ms Nomonde Sibawu

AVAILABLE THROUGHOUT THE YEAR



All creatures have homes – whether above, on, or below the ground. Let's see which belong where?

The Khoisan: Ms Nozipho Madinda • All ages

A lesson using slides, objects, posters and working tools. Learners are shown our replica Bushman cave with paintings and are challenged to produce their own. amaXhosa Culture and Lifestyle Imithi nencubeko yamaXhosa.



Plants and Xhosa Culture: Phumlani Cimi Selmar Schonland Herbarium/ISER

A slide show and hands-on activities showing how plants are important to Xhosa traditions and why we need to look after them. All ages. Please note that a Museum teaching box on amaXhosa lifestyle is available on loan.



THE OBSERVATORY MUSEUM



Visit the 'Observatory Museum'. Although not an actual Observatory, however, see:

- the only true Victorian camera obscura in the southern hemisphere .
- how 19th century owner Henry Carter Galpin calculated Grahamstown's time.
- how the Victorians lived with their quaint displays of collectibles.

•Grahamstown-based learners in uniform are free if wanting to see the museum itself. There is a R5 per child and R8 per adult entrance fee for ALL schools wanting to see the unique "Camera Obscura" section of the Museum. Classes divide into smaller groups as only 10 allowed in the camera at one time.

•Please allow 10 minutes per group for the camera demonstration while the rest of the class hunts "treasure" with the aid of a worksheet.

THE MUMMIES OF EGYPT



The Egyptians and their fascinating ideas about afterlife. Learn how bodies were mummified according to priestly ritualistic procedures. See the Museum's own 4 450 year-old Mummy which has fascinated Museum visitors for generations.

THE GENERAL TOUR



This is a tour of the Museum's Wow! favourites:

- hear about Jack, the clever baboon;
- see mounted animals in the Mammal gallery;
- visit the childrens' touch-'n-feel mammal gallery
- Ever seen a real Mummy before?
- Wow! at the Museum's refurbished Palaeontology Gallery;
- see a genuine Foucault Pendulum (a demonstration which proves the Earth moves around the sun)
- a real meteorite and how the phases of the moon work.
- And many, many more items for your learners.



LIFE IN THE UNDERGROWTH



A DAVID ATTENBOROUGH SERIES

The Invaders from the Sea • Taking To The Air • The Silk Spinners • Intimate Relations

Dr F de Moor (Aquatic biologist - Albany Museum) or Mr A Kirk-Spriggs (Entomologist - Albany Museum)

David Attenborough reveals a secret universe one teeming with life that is all around us, yet we never see it. Here David shows us not just bugs, beetles and creepy-crawlies, but scorpions and centipedes, mites and mantids, spiders and dragonflies. We are presented with not just life in the undergrowth, but the dramatic battles between predator and prey that are happening in the corner of your living room and in your larder! See magnificent spectacles: swarming antler moths; millions of desert locusts; a mountain of cockroaches. And remember, for every pound of humans on Earth, there are 300 pounds of insects.

Grades 5 upwards:

A 20-minute video of one of the topics in the well-known series. Includes a short accompanying explanation offered by our resident aquatic biologists or entomologist. Actual specimens available for hands-on viewing as far as possible.



THE NATIONAL SCIENCE FESTIVAL

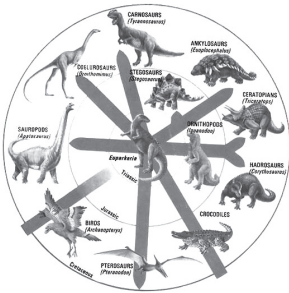
16 - 22 April 2008

Visit the National Science Festival, hosted by the Grahamstown Foundation in the Settlers Monument building on Gunfire Hill, Grahamstown. Within walking distance from the Albany Museum.

A festival of scientifically orientated talks and demonstrations makes this a worthwhile "must see" to spark your learners' interest in Science.

Contact: Tel 046 6031106 or fax 046 6031143 or email:scifest@foundation.org.za or visit: www.scifest.org.za

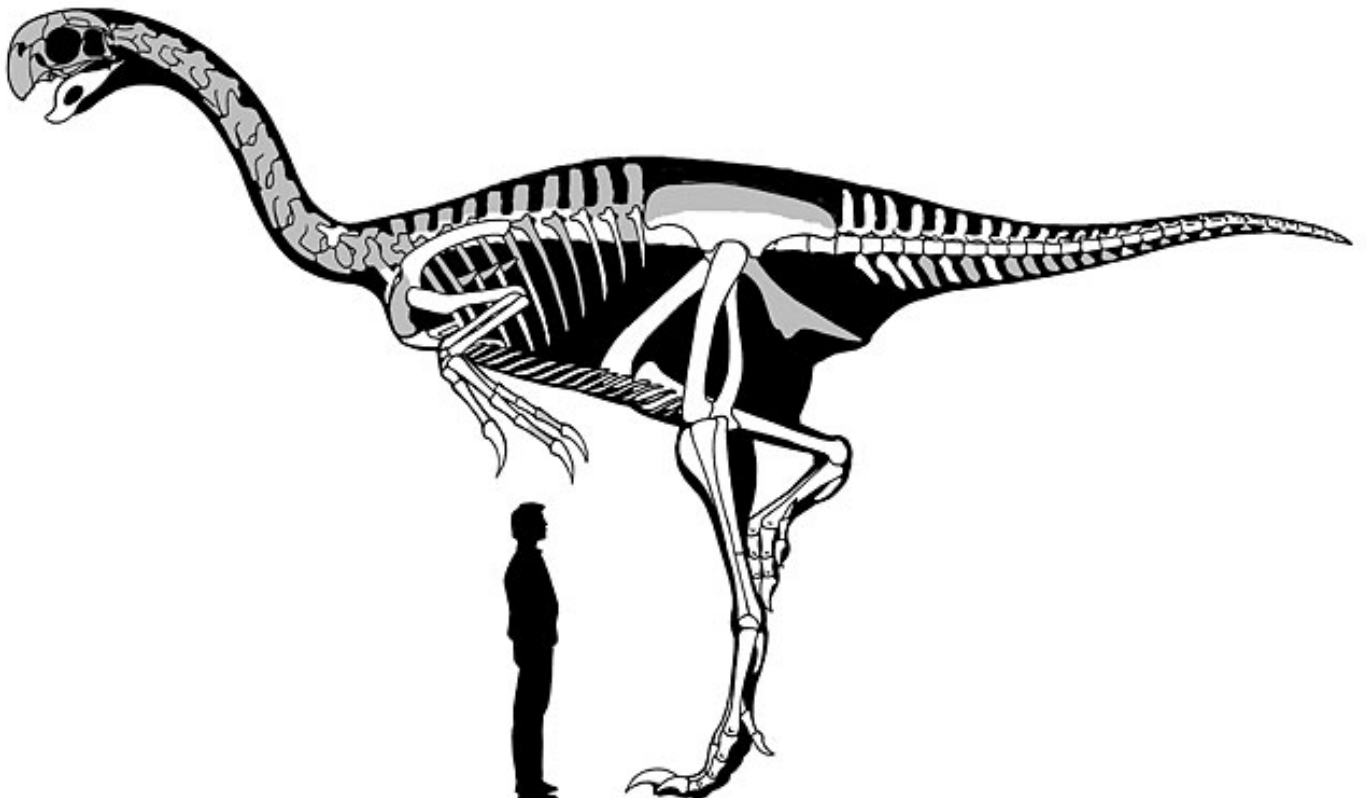
DINOSAURS



B de Klerk • Museum palaeontologist or Ms M Lewis
All primary school ages.

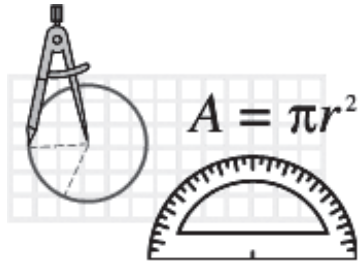
In September 2005, the Albany Museum opened the refurbished Dinosaur Gallery! In 2006, it got even better! Now a well-loved favourite amongst all age groups, dinosaurs fascinate young and old.

- What makes a dinosaur a real dinosaur and why did they disappear?
- See dinosaur reconstructions, handle millions-years-old fossils and
- hear about some amazing Eastern Cape 'dinosaur'/reptilian finds.





MEASUREMENT



Ms N Sibawu/ N Madinda
All ages

The ever popular 'Measurement' lesson: How high, how wide, how much, how heavy and how far? – measuring ourselves and the world around us.

Five "hands-on" working stations showing practical applications of basic concepts of mass, size, length and height. Very practical and loads of fun.

EARTH & SPACE GALLERY



A short
introduction on
Space – some
basic concepts

Mrs Lewis
All grade levels

Some terminology: "observatory"; "planetarium"; "telescopes" and "meteors".

- See a demonstration of the phases of the Moon and
- a talk on the Museum's own meteorite and
- the Foucault pendulum.

New! amaXhosa stories about SPACE!

Ms N Sibawu (History Division - Albany Museum)

Listen to amaXhosa stories and beliefs about the planets and the stars.



EXPLORING OUR SEASHORE



Ms Lewis (All ages)

Getting ready for that field trip to the sea?

Hear about invertebrates and mollusks and the creatures that we find in our oceans and on our shore;

- visit the Museum's shell gallery.
- A short explanation of the effect of the Moon on tides and
- a fun game to bring the message home.

THE BIG FIVE IN HERITAGE



Ms F Way-Jones/Ms N Sibawu (History Division - Albany Museum)
Grades 5 upwards

The central business district of Grahamstown is home to several heritage sites:

- the Cathedral,
- The War Memorial,
- the Drostdy Arch and
- the 1820 Settlers Memorial to name a few.

A 20-minute slide show in the History Museum (next door to the Natural Sciences Museum) is followed by a 25-minute walk along High Street, make this an "open history" book for your learners. A historical map-making exercise is included.

WATER GALLERY



Mrs Lewis (All ages)

We are 70% water – try to live without it! Walk through the Blue Planet Gallery and follow the journey of water from the mountains to the sea. See what happens when we don't look after our resources and visit the Museum classroom for some water-saving experiments.



OTHER EXTRAS! KYANYA MATHS & SCIENCE CLUB

This club runs at the Museum on Saturday mornings from 9.00 - 10.00 (Maths) and 10.00 – 11.00 am (Science). It aims to foster enthusiastic learning in the fields of Science and Mathematics amongst 7th graders. New 7th grade intake in February of each year

OTHER EXTRAS! ROAD TRIPS



Knowing how hard it is for schools to reach the museum, the Education Department offers 'Roadshows' -bringing lessons to schools. Bookings happen on a first come, first served basis. If you can fill your school hall or classroom with learners, we will present our programme at your school. (Note: Special Roadshow Programmes only).

OTHER EXTRAS! CARING FOR OUR ANIMALS

SPCA; Grahamstown Veterinary Clinic:

We will meet you at your school. Please have playground space available. Bookings on first come/first serve basis.

- See an amateur obedience demonstration of Gatsby, the much loved and well-known Bearded Collie,
 - Talk about looking after our animals and watching out for diseases
 - Talk on the work of the SPCA
- Times: 9.00 – 11.30

OTHER EXTRAS! KEEPING SAFE: OUR POLICE AND US



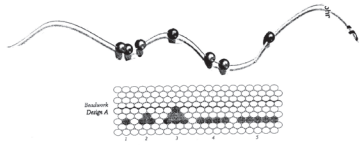
Inspectors Milanda Coetzer, Antoinette de Beer and Tim Hackart

Tuesdays and Thursdays only.

Peace-keeping only the responsibility of the Police? Hear what Inspector Milanda Coetzer and her team will tell about keeping safe in a crime-ridden community.

- A gun demonstration- and how to avoid accidents
- a puppet show dealing with "My Body" and "Family abuse" will make this an informative and eye-opening 1.30 hours.

Note! This will be presented at your school for the Roadshow focus week only. Bookings will be on a first come/first serve basis.

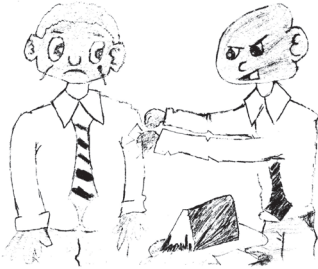


Mathematical puzzles in amaXhosa beadwork

Nozipho Madinda • Grades 6 upwards

First see and hear about the messaging qualities of amaXhosa beadwork...then start counting! Fascinating mathematical patterns emerge. Colour, count and build mathematical confidence.

DEALING WITH BULLYING



Ms Nosipho Madinda
Grade 4 upwards

An excellent life orientation lesson, encouraging social development and peace keeping skills, this lesson has role play as its main activity. Situations are discussed and suggestions made to remove real-life tormenting occurring in many classrooms today.



FOCUS WEEKS:

THE BELL

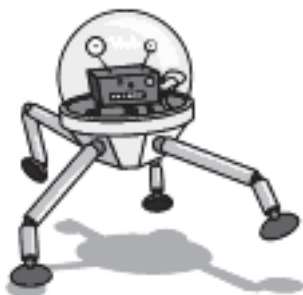


Professor C A Lewis, Tower Captain, Grahamstown Cathedral
25 – 29 February 2008 • 8.30 – 9.30

Each year still requests: a tour of the Cathedral Bell Tower and a short explanation of the history of the Cathedral of St Michael and St George.

- What can bells teach us about music, mathematics and communication?
- Listen to the Tower Captain explain the workings of bells and their musical patterns.
- One or two participants might find themselves with a “Sally” in their hands!

CLICKING WITH COMPUTERS



Professor Peter Clayton/computer science students
Computer Science Department - Rhodes University
10 – 14 March 2008 • 9.00 – 10.00 • Grades 5 - 7

Want to see a real “walkin’ talkin’ robot dog? Computers are not only word/data processors or game machines. Note that although these are NOT computer-skills sessions, bring your learners to the museum to see some ‘computerized robot magic’.

KEEPING SAFE



Inspectors Milanda Coetzer, Antoinette de Beer and Tim Hackart.
17,22,24 and 29 April 2008 • 9.15 – 10.30 am

Peace-keeping only the responsibility of the Police? Hear what Inspector Milanda Coetzer and her team will tell about keeping safe in a crime-ridden community.

- A gun demonstration and
 - a puppet show dealing with “My Body”
- “Family abuse” will make this an informative and eye-opening 1.30 hours.



THE BIG FIVE IN HERITAGE



Ms F Way-Jones/Ms N Sibawu • History Division, Albany Museum
Grades 5 upwards • 26 – 30 May 2008

The central business district of Grahamstown is home to several heritage sites:

- the Cathedral,
 - The War Memorial,
 - the Drostdy Arch,
 - the 1820 Settlers Memorial
- A 20-minute slide show in the History Museum (next door to the Natural Sciences Museum) is followed by a short walk along High Street, make this an “open history” book for your learners.

ANIMAL COLOURS: SEEING THE MESSAGE

We live in a colourful world, and colours often have a special meaning in our societies. Many animals also see colours, and use colour to send signals to other individuals.

PHYSICS IS PHUN



Professor Adrian Craig • Department of Zoology and Entomology, Rhodes University • Grades 3 upwards • 23 – 26 June 2008 • 9.00 – 10.00 am

Emeritus Professor Eddie Baart • Physics Department, Rhodes University
Grades 5 upwards • 12 – 16 May 2008 • 9.00 – 10.00 am

Short extracts from Prof Emeritus Baart’s collection of fascinating Science Educational video clips. As well as plenty of hands-on show -‘n-tell.

THE WORLD IN MICRO



Visit the mind-expanding Microscopic Unit at Rhodes University and wonder at the microscopic version of blood, hair or plant cells.

- Staff of the Microscopy Unit Rhodes University
- Own transport to Rhodes University essential
- 23 – 26 June 2008 • all ages

INSECTS



Pests or personalities? Mrs Colleen Hepburn, Rhodes University
Grade 5 upwards • 2 – 6 June 2008

Do insects have particular characteristics by which we may recognize them as helpful or useful to us? Or are they just plain annoying?



THE BIG FIVE IN HERITAGE



Dr Johan Binneman, Albany Museum • Grade 6 upwards
28 July – 1 August 2008 • 9.00 – 10.00 am

The fascinating science of archaeology impacts on our lives in many ways. Understanding the peoples of the past is a major facet of understanding ourselves. Hear Dr Binneman explain the many aspects of archaeology. Hear about his first South African Khoi Mummy find.

WHEN LIFE NEARLY DIED BETWEEN 250 AND 65 MILLION YEARS AGO

Dr Billy de Klerk • All ages
11 – 15 August 2008 • 9.00 – 10.00 am

After a great ice age during the Permian Period around 300 million years ago, primitive animals and plants again started to colonize the land. This we know because they are preserved as fossils in what we now know as the Karoo Basin - a great sedimentary depository recording the evolution of life over 100 million years. The success of these plants and animals was interrupted by two massive extinction events that took place at 250 and 65 million years ago when it is estimated that up to 85% of all life was killed off on the planet. The 65 million year event is perhaps better known because it was at this time that the dinosaurs became extinct. "Mass extinction events" have played an important part in the evolution of life.

CLAY

Clay, the common denominator between Cultures

Mr Mpho Molapisi, Anthropologist, Albany Museum and colleagues
25 – 29 August 2008 • All ages

Clay – the common ingredient inherent in artefacts used by all cultures to prepare, store or eat their food.

- Hear how different African cultures go about making their pots;
- even try your hand at a small pot yourself!
- Visit our attached History Museum to see how other people made pots throughout time.

FOR HERITAGE DAY



Imbali yethu – Our amaXhosa Heritage

Facilitated by Ms N Madinda • Ages – intermediate upwards

amaXhosa Food Way

15 – 19 September 2008 • 9.00 – 10.00

Booking space limited this year! Only week available. See also the program on amaXhosa beliefs on the planets and stars. (Ms N Sibawu)



LIFE IN THE POND

Ms Helen James • Albany Museum
Grade 6 or 7 • 13 – 17 October 2008 • 9.00 – 12.00 noon
At Thomas Baines • Education Centre • Own transport essential!

An all-time favourite focus week. Ply knee-deep in a pond with nets at the Thomas Baines Reserve, haul up some aquatic insects. Learn all about them at a talk in the Centre's classroom. An unforgettable experience! Please meet at the Museum front gates at 9.00 am and we'll go in convoy with your own transport to Thomas Baines (16 kms). Bring own packed lunch, hats, sunscreen and 'splash gear'. Your own transport needs to pick you up at the centre again at 12.00 pm.

THE ANIMAL "POO" TRAIL

New this year! Follow a trail of different animal poo's in the Thomas Baines Reserve! Learn about the plants that grow in the reserve and what animals eat them. Spend some time splashing in the river ponds – back for a slide talk and packed-lunch picnic at the Centre.
20 – 24 October 2008. Own transport essential! Leave from the Albany Museum at 9.00 am, returning at 12.00 noon. Please bring picnic lunch, hats and 'splash gear'.

WHAT'S BAD ABOUT BARBEL'S AND BASS?



Dr J Cambray, Albany Museum • Intermediate upwards • 9.00 – 10.00

7 – 10 October 2008

Barbels and Bass are readily introduced into our river systems by unwary and unsuspecting people. To some, they are a source of food; to others entertainment. Listen to what the real effects are of introducing an essentially alien fish into our eastern Cape waterways. Then play the fun interactive game, 'Hook the aliens out' and win prizes.

ANIMAL WEEK

Talks by SPCA; Dr Stetler and assistants; Amateur Dog obedience training, Dr R Cosser and Gatsby, his Bearded Collie.

7 – 10 October 2008 with possibilities for the following week as well. Intermediate phase upwards. Times: 9.15 – 11.30



BOOKING FORMS:

Please fill in a booking form and fax to the Albany Museum (Fax 046 6222398). We will reply by fax, indicating which slots you have been given. Please confirm that you have received this, stating also whether the times are convenient for you and PLLLLLLEEEASSSSSEEEEE!.....

FILL IN YOUR BOOKINGS MADE IN YOUR YEARLY PLANNER!

Teachers do not follow this simple way of remembering their appointments after receiving their booking forms back. It saves us embarrassment as we have to keep busy Rhodes lecturers waiting for your class!

SCHOOL

TEACHER (Please include first name)

GRADE AND SECTION OF GRADE

LANGUAGE NUMBER IN CLASS

PHONE CELL

BEST TIME TO PHONE

FAX

BOOKING FORM FOCUS WEEKS

- Ringing the Cathedral Bells - 25 – 29 February
- Clicking onto Computers - 10 – 14 March
 - Maths in Nature - 21 – 25 April
- Police – Security and Us - 17, 22, 24 and 29 April
 - Physics is Phun – Light - 12 – 16 May
- Focus On Five – heritage sites - 26 – 30 May
 - Insects - 2 - 6 June
 - Animal colours: Birds - 3 – 26 June
 - The world in micro - 23 – 26 June
 - Archaeology - 28 July – 1 August
 - Dinosaurs - 11 – 15 August
 - AmaXhosa cooking - 15 – 19 September
- What's bad about Barbels? - 7 – 10 October
- Taking care of our Animals - 7 – 10 October
 - Life in the Pond - 13 – 17 October
 - The animal poo trail - 20 – 24 October