



PROJECT FUNDERS



Funded by the Intra-Africa
Academic Mobility Scheme of
the European Union



PROJECT PARTNERS



MAKERERE UNIVERSITY



CONTENTS



AWaRMN

4



**RHODES
UNIVERSITY**

6



**MAKERERE
UNIVERSITY**

31



**FEDERAL UNI-
VERSITY OF
TECHNOLOGY,
MINNA**

60



**NATIONAL SCHOOL
OF HYDRAULICS**

72



**UNIVERSITY
OF KINSHASA**

80

EDITOR



Kasemiire Mariam, Email: mkase-miire@gmail.com College of Natural Sciences, Makerere University

Copyright: The Common Package of Services document is a publication of African Water Resource Mobility Network (AWARMN)

THE AFRICAN WATER RESOURCE MOBILITY NETWORK (AWARMN)

Achieving sustainable development, and inclusive growth within Africa would largely be undermined if its water resources are not sustainably managed, utilised, protected and governed.

The continent is facing multiple water-related challenges, including declining water quantity and quality, inadequate governance and institutional structures, declining monitoring networks, increasing resource use in the face of a growing human population, and increasing resource variability associated with future changing climates.

As the region strives toward improving political, economic and social stability, the importance of secure water supplies will assume increasing significance. If this is neglected, a potential for conflict exists:

- 1) Within and between communities through lack of water and sanitation related access and services, and
- 2) Between countries through lack of agreement on trans-boundary sharing of water resources and most importantly,
- 3) Between societal constituencies through perceived non-inclusive and equitable sharing of water resources (distributive justice).

The African Water Resource Mobility Network (AWARMN) is a project of the Intra-Africa Academic Mobility Scheme set up to address the water-related pressing needs on the African continent.

The main objective of addressing these pressing needs are achieved through the following;

1) A transdisciplinary, socially-engaged training embedded in existing programmes within partner institutions, ensuring increases in the numbers of highly qualified and competent (MSc and PhD) graduates in the field of water resources in Africa;

2) Develop and harmonise programmes and curricula, with a particular emphasis on disciplinary excellence and transdisciplinary capability;

3) Build and sustain teaching and research capabilities among partner institutions;

4) Design and implement research programmes based on collaboration and cooperation during, and beyond, the AWARMN funding;

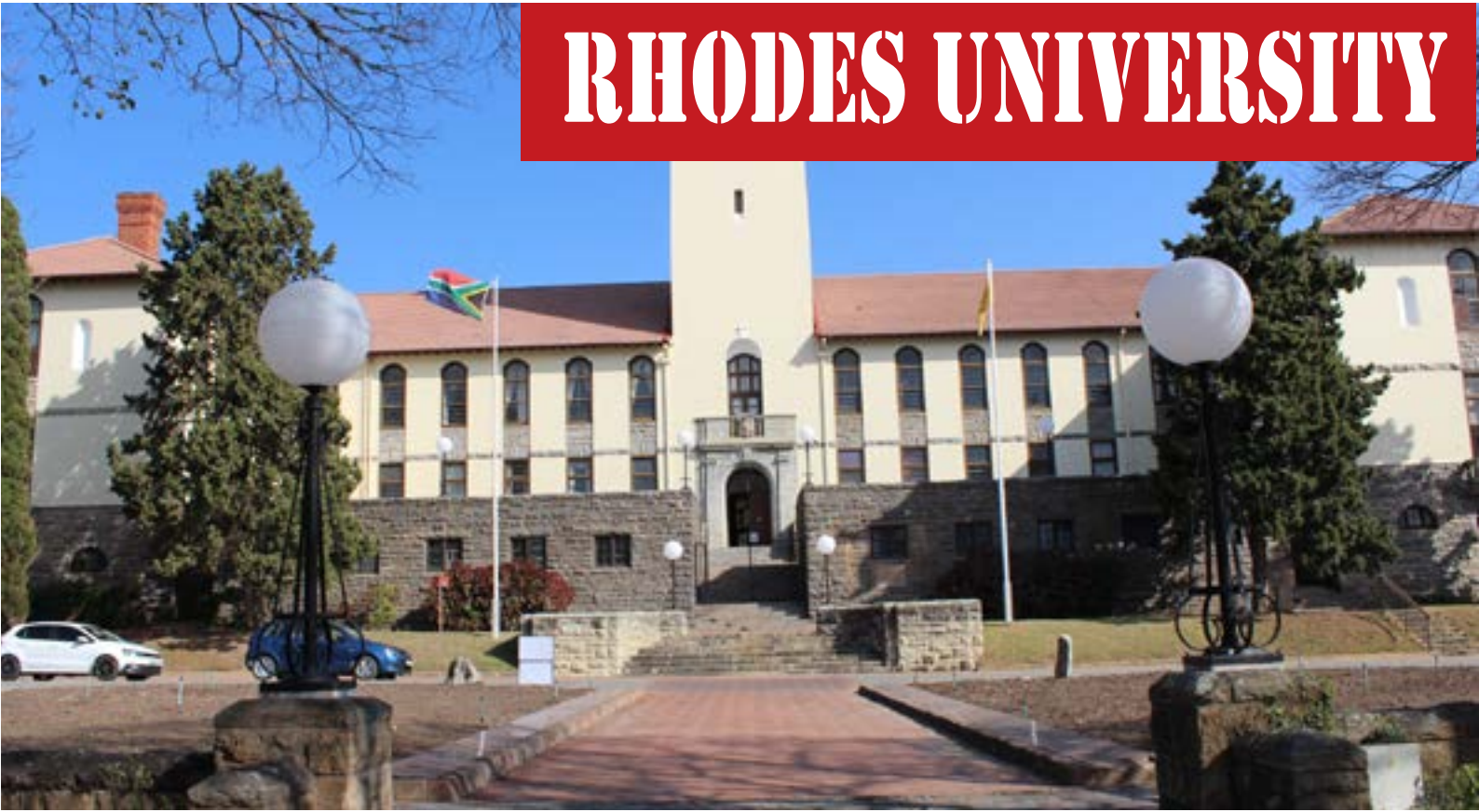
5) Facilitate student and staff mobility to promote multiculturalism and internationalisation among African institutions of higher learning;

6) Contribute to innovation and water technologies that advance social-economic development of Africa and;

7) Address the professional career development and employability of graduates by creating a direct interface between AWARMN and industry partners.

AWARMN is funded by the Intra-Africa Academic Mobility Scheme of the European Union (https://eacea.ec.europa.eu/intra-africa_en)

RHODES UNIVERSITY



Rhodes University is a public research-intensive university located in Makhanda (Grahamstown) in the Eastern Cape Province of South Africa. The University has excellent postgraduate and international support services including the Centre for Postgraduate Studies, the International Office and Research Office. Rhodes University through the Institute for Water Research (IWR) is the coordinating partner for the African Water Resources Mobility Network (AWARMN).



The Institute is also the ARUA Centre of Excellence in Water. Rhodes University has extensive experience in managing large multilateral grants e.g. the Regional Initiatives in Science and Education Programme (RIS), Africa Multiple Clusters of Excellence, UKRI Capability grant. Website: www.ru.ac.za.

STUDY AT RHODES UNIVERSITY



TRAVEL AND VISA REQUIREMENTS FOR SOUTH AFRICA

The following documents are needed to apply for a study visa:

- A letter of acceptance from host university
- Completed application form
- 2 passport photos
- International passport
- Radiology/medical report
- Certified copies of degrees and transcripts
- A letter from the university in support of your study visa
- Intra Africa Academic Mobility scholarship award documents
- Confirmation of Intra-Africa Academic Mobility scholarship award from Rhodes University African Water Resources Mobility Network (AWaRMN) administrator.





- Confirmation of Intra-Africa Academic Mobility scholarship award from you.
- The relevant application fee (this will depend on the Embassy in your country)
- Proof of financial means whilst in South Africa
- Proof of a South African medical health cover**
- Flight bookings.
- Proof of residence (accommodation) in South Africa
- Yellow fever vaccination (if coming from / traveling through an endemic country)
- A police clearance certificate (Not more than 12 months old)
- Repatriation fee or a return ticket (Original proof of payment).



THE VISA APPLICATION PROCESS

All international students are advised to telephone VFS.Global (the agent appointed by the Department of Home Affairs in South Africa to facilitate the Visa application process) or the nearest South African mission for information about applying for a Study Visa. Remember to take a reference number for all calls so that you can refer to the phone call when/if you are challenged at a later stage. **VFS (VISA Facilitation Service)** - Address and contact details as below:

Website: <http://www.vfsglobal.com/dha/southafrica>

VFS.Global Contact Details:

Website: <https://www.vfsglobal.com/dha/southafrica/study-visa-content.html>

Telephone: +27124253000 (Operational hours:
Mon-Fri – 08:00 to 12:00 & 13:00 to 17:00)

Email: info.dhasa@vfshelpline.com

Travel Across Borders

You may not travel across South Africa's borders while your application is being processed. If you do travel across South Africa's borders without a currently valid visa, you risk being declared an 'undesirable person' and being banned from South Africa for between 12 months and 5 years. It is possible to appeal any banning, but this is a lengthy process.



All applications for study visas need to be submitted to the South African embassy or consulate for your country of origin. You cannot apply for a new study visa within South Africa's borders.

Please allow 8 - 10 weeks for processing time.

For more information, please consult the Embassy, High Commission or Consulate in your country.





CERTIFICATE OF CLEARANCE

Upon arrival at Rhodes University, a student is required to produce the following documents to the Student Administrative Center or 'Student Bureau' at Eden Grove Building on Rhodes University Campus in order to obtain a Certificate of Clearance for purposes of academic registration:

- Passport
- Study Visa and
- Proof of a South African medical aid cover **(12 months)

**Medical health cover must cover you for the duration of your study.

While Your Application is Being Processed

If VFS takes longer than 8 - 10 weeks to process your visa application, please send an email to the International Office at Rhodes University (internationaloffice@ru.ac.za).

Please also call this toll-free number for VFS.

Global assistance: +2712 425 3000

Be sure to take a reference number for the call.

MAILING RHODES UNIVERSITY

Your email to the Rhodes International Office should contain the following information in point form:

- First Name and Surname
- Student Number, Degree
- South African cellphone number
- Nationality
- Passport Number
- Type of Visa Applied for
- Reference number for application of visa
- Date of Application
- Place of Application
- Amount Paid
- Current South African Visa information (if any)
- Date(s) and Reference Number(s) of Call(s) to VFS
- Brief summary of problems encountered.

Please also attach scanned copies of the identity page of your passport, the receipt of application form and any current South African visas you may have.



CURRENCY AND MONEY

The South African currency is the Rand (100 cents). Most visitors rely on their credit cards and/or international debit cards to pay for goods and services and to withdraw cash – both Visa and MasterCard are readily accepted in South Africa. (Inform your bank at home in advance of the duration of your stay in South Africa.) It is advisable to buy about R500 in cash at your departure point.



This should cover contingencies during your first couple of days in South Africa. Get a couple of R2 and R5 coins for tips as soon as you can after landing. There are three major banks in South Africa and in Grahamstown (Makhanda) where Rhodes University is located (The Standard Bank, First National Bank and Absa Bank) and all of these exchange foreign currency or traveller's cheques. You may decide to open an account if you are going to be at Rhodes for any length of time.



MEDICAL AID

All international students are required to have South African medical cover for the duration of their study at Rhodes University. This means that scholarship holders will have 2 medical covers (i.e. South African medical cover and the Europ assistance medical cover). Our AWaRMN administrative team will assist you with applying for medical aid cover for the duration of your studies in South Africa.

For medical application, the following information are required of you:

Name:

Surname

Passport Number

Student Number

Address:

Email address:

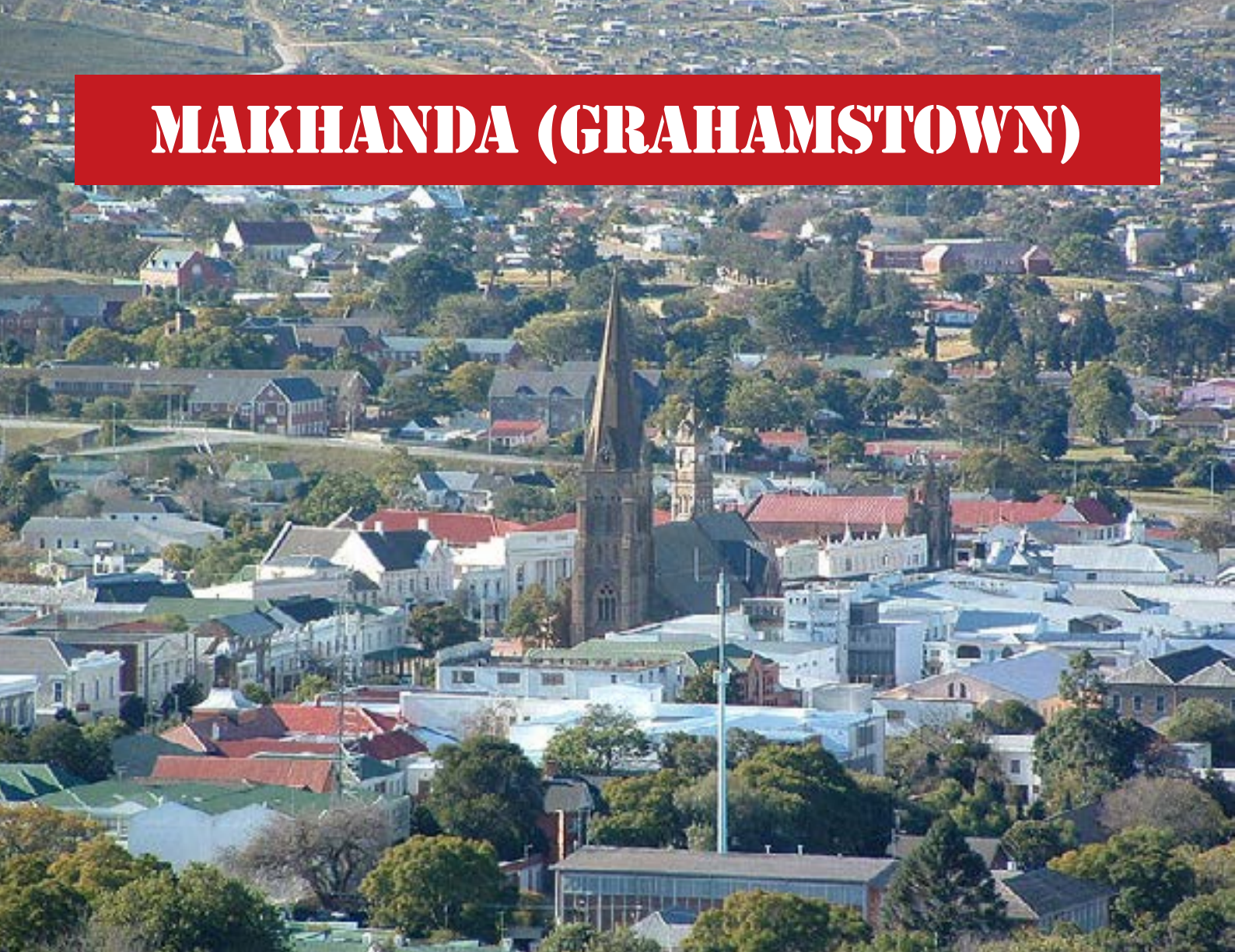
A copy of your passport and make sure you copy everyone in your response to this email

More medical aid info:

Momentum Medical Scheme
(Ingwe Option)

Europ assistance

MAKHANDA (GRAHAMSTOWN)




Makhanda (Grahamstown) is in the middle of the Eastern Cape Province of South Africa, and is halfway between our two major coastal cities: Durban and Cape Town. The rainy season is usually during summer months (November to March) and rainfall increases again slightly during autumn (April-June). Annual rainfall is low averaging about 600 mm. Winters can be cold with temperatures reaching as low as 1-2 degrees Celsius during the early hours of the morning resulting in frosting. Heat waves often occur in summer when temperatures can reach a maximum of 38 degrees Celsius. A range of clothing is required for you to be comfortable during your residence in Makhanda.



LEISURE ACTIVITIES

Makhanda is only 60 km from the pristine beach towns of Kenton-on-Sea and Port Alfred and 120 km from the coastal city of Port Elizabeth (the nearest large city). To the North, there are beautiful mountain ranges, which are often snow-capped in winter. A popular destination that is only 140 km from Makhanda is the tiny hamlet of Hogsback in the mountains. When it is not snowing, you can walk through the dense and mystical forests that surround this town. To the West, one finds the other worldly Karroo region. This semi-arid landscape is captivating, with crystal-clear night skies for stargazing. Here, you will find many farm bed and breakfasts where you can stay and enjoy the wildlife.



If you enjoy the big city life then explore travelling to some of South Africa's largest cities: Johannesburg, Cape Town or Durban- they are all very different!

Visit the Makana Toursim webpage for more information on local 'things to do' in and around Makhanda: <https://www.grahamstown.co.za/>

INTRODUCTION TO RHODES UNIVERSITY, MAKHANDA

Rhodes University is a prestigious institution with a rich student life. Rhodes University has a beautiful campus, which occupies a large part of the western side of Makhandá (Grahamstown). The main campus was built in 1904 when the University was founded. Some of the buildings date back to the 1810s when Makhandá (Grahamstown) was a British fort in the Frontier Wars. Both the Linguistics and the Mathematics departments used to be old barracks, and the Botany Department is situated in a stately old war hospital. The Administration Building, with its distinctive clock tower, mimics the fort-like shape of the buildings that date from that time. The International Office and Student Bureau are located in a more modern building called 'Eden Grove' Building (which is also the student administrative building you need to visit on arrival at Rhodes).

For information about life at Rhodes, please browse through the general student information available at: <http://www.ru.ac.za/studentlife/>

Please also visit the Admissions Gateway for a detailed rundown of student life at Rhodes.

Upon arrival at the University, visit the Administration office at the Student Bureau in Eden Grove building and produce your acceptance letter, proof of medical aid cover, passport and study permit. You will be required to take a photo later for purposes of producing your student card. If you are to be accommodated within the University residences, you may request a proof of residence. This will help you when you open a bank account. Once you get the student card, you are then registered.

SUPPORT FOR INTERNATIONAL STUDENTS

For issues and problems that relate to more than just your course content, the following people are there to help you:

Director of Student Affairs' Office

Tel: +27 (0)46 603 8181

E-mail: stu-

dentaffairs@ru.ac.za

The Dean of your faculty

Your Warden or Sub-Warden (for residing students)

The staff at the International Office

Our office is open Mondays to Fridays from 8:00am to 12:45pm and 14:00pm to 16:30pm for any queries.

E-mail: internationaloffice@ru.ac.za

Tel: +27 (0)46 603 8217



ACCOMMODATION

ON-CAMPUS ACCOMMODATION

The University has numerous residences that cater for undergraduate and postgraduate students and mixed vs. single sex residences. Please visit the list of residences here:

<https://www.ru.ac.za/residences/>

OFF-CAMPUS ACCOMMODATION

There are numerous options for student housing off-campus, including sharing housing with other students or occupying a single flat. Off-campus accommodation is best sought using the assistance of a local real estate agent. You can contact the following estate agents indicating your rental and housing criteria for further assistance:

IPC Properties – Grahamstown: Tel: (+27)46 622 5546 or <http://propertygrahamstown.co.za/>

RE/MAX Frontier - Grahamstown: Tel: (+27)46 622 6061; <http://www.remaxfrontier.co.za/>

Pam Golding Properties – Grahamstown Rentals: Tel: (+27)46 622 2798; <https://www.pamgolding.co.za/>

Kim Webber Real Estate – Grahamstown: Tel: (+27)82 523 8277



TRANSPORT

Given the small size of Rhodes University and Makhanda, most places on campus and in the center of town are within 5-15 minutes walking distance. Most students either walk or cycle around campus and town. If you wish to venture to the outskirts of town (for example to go to Settler's Hospital) or if you wish to travel out of town there are various local private taxi and bus services. Some of these include:

JC Shuttle: +(27)83 444 8232 / +(27)46 622 2481

Peter's Shuttle Service: +(27)79 327 7414

Dolphin Taxi: +(27)74 573 5618

John Du Preez Shuttles: +(27)817294275

Cab Ride Grahamstown: +(27)78 313 3818 or <https://www.facebook.com/cabgrahamstownrides/>

Blunden Tours: +(27)41 451 4803

Bidvest Car Rentals: +(27)81 375 4330 (if you have a valid drivers license and would like to drive yourself)

Bus services: you can book a bus ticket to any major city and some of the smaller towns in South Africa through the local booking company, 'Computicket': <https://www.facebook.com/cabgrahamstownrides/>

Buses leave from Bathurst Street next to the Frontiers Country Hotel in the center of town. Some common Bus companies include: Greyhound, InterCape, City to City, and Translux.

A photograph of the Rhodes University building, a large white structure with a central portico supported by columns. There are trees in the foreground and a red structure near the entrance.

RHODES UNIVERSITY FACILITIES & RESOURCES

POSTGRADUATE GATEWAY

The University has a dedicated Centre for Postgraduate Studies and associated webpage with numerous resources and academic training opportunities. Visit the gateway here:

<https://www.ru.ac.za/postgraduategateway/>

LIBRARY

Rhodes University has three Libraries, two of which are applicable to Science students:

1. RU Library- <http://www.ru.ac.za/library/>

The main library is situated in the middle of campus. It was upgraded in 2009 and features a massive selection of books and journals. It also has several quiet and comfortable workspaces where students can study without distraction. There are two computer labs in the library, one of which is devoted to postgraduate students.

2. Cory Library - <http://www.ru.ac.za/corylibrary/>

The Cory Library houses historical records and books pertaining to Southern Africa. This library is open to all visitors who want to research family genealogies, early journalism in the area and the cultural and political history of the SADC region. It is situated in the Eden Grove Building.



Although all residences are equipped with very good internet connections, Rhodes accommodates for the fact that not all students will have personal computers. The University has several high-speed computer labs from which you can connect to the Internet. These labs provide a quiet work environment for all of our students and are all equipped with printers.

The most popular are:

- The Jacaranda ("Jac") Labs on Artillery Road by the School of Languages
- The Eden Grove Labs in the Eden Grove Building
- The Union Labs in the Bantu Stephen Biko Building (previously "the Union") on Prince Alfred Road

If you want to find out more about the Rhodes computer labs, please see <https://www.ru.ac.za/informationandtechnologyservices/studentsupport/>

EDUROAM - INTERNET CONNECTIVITY

Eduroam connection instructions

- Eduroam (education roaming) is the secure, world-wide roaming access service developed for the international research and education community. It's widely available across Rhodes University's campus, as well as at many other institutions in South Africa or around the world.
- If you're a Rhodes University student or staff member, you can connect your phone, tablet or PC to eduroam by downloading geteduroam or eduroam CAT from the links below. They will configure your device to connect to the network correctly, allowing your device to connect automatically whenever it's in range.
 - If you're visiting Rhodes University from another organisation that participates in eduroam, you're welcome to use our eduroam service. If your device isn't already configured, please ask your home institution's IT services for instructions to connect.

Android

Android 7 or older

Windows, Apple, Linux

Download geteduroam

Download eduroam CAT

Download eduroam



Eduroam is a secure, world-wide roaming access service developed for the international research and education community. It allows students, researchers and staff from participating institutions to obtain internet connectivity across campus and when visiting other participating institutions by simply opening their laptop.

How to use this service at Rhodes:

- Check if your home institution participates in eduroam.
- Connect to the eduroam-test wireless network at Rhodes to get free Internet access.

Authenticate with your home institution's credentials (you may need to make arrangements with them for this to work).

The eduroam-test wireless network for visitors offers limited Internet access, including email and web browsing. It does not provide access to Rhodes' internal network.

For more information, please see: <https://www.ru.ac.za/informationandtechnologyservices/staffsupport/wireless/eduroam/>



HEALTH SERVICES

Rhodes University has an on-campus health care center. Students wishing to see a medical professional are welcome to visit our health care center free of charge.

The professionals here are capable of helping you with colds, 'flu, headaches and most regular complaints.

They are also able to do HIV testing and provide the necessary counselling. In the case of a serious complaint, the health care professionals will be able to refer you to a local specialist designated by your medical aid or to see a Doctor at the Town hospital, Settlers Hospital.

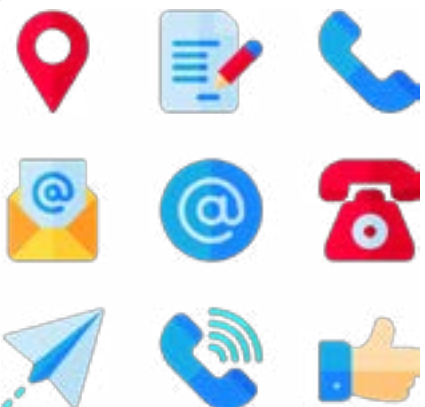
CONTACT INFORMATION

Tel: 046 603 8523

Email: healthcarecentre@ru.ac.za

Website: [http://www.ru.ac.za/](http://www.ru.ac.za/healthcentre/services/)

[healthcentre/services/](http://www.ru.ac.za/healthcentre/services/)



STUDENT REPRESENTATIVE COUNCIL (SRC)



The Student Representative Council (SRC) is the active voice of the Student Body. It represents the students' interests and concerns to Rhodes Administrative structures and at Senate Meetings. The SRC is responsible for the running of student societies. They also aim to create a great student atmosphere on campus, arranging social events and ensuring that students get access to facilities that make living at Rhodes comfortable.



There is an SRC councilor responsible for the interests of all international students at Rhodes. You are welcome to visit this councilor to relay any concerns you may have about life at Rhodes. The councilor's email address is srcinternational@ru.ac.za.

For more information, please see the SRC website.

COUNCILING SERVICES



Counselling center- <http://www.ru.ac.za/counsellingcentre/>
Rhodes offers Student Counselling for all of its students free of charge. Should you require ANY counselling while you are at Rhodes, please visit our counsellors at the Counselling Centre. The Student Counselling Centre is located on the top floor of the Student Union Building on Prince Alfred Street and is open Monday to Friday from 08h00 – 17h00.

To contact the Student Counselling Centre for more information, call them at (046) 603 7070 during office hours or email counsellingcentre@ru.ac.za.

The 24 hour emergency line is: +(27)82 803 0177

HARASSMENT RE- PORTING SERVICES

Should you need to report an incidence of harassment, discrimination and victimization, please contact: Masimbulele Buso from Rhodes Equity & Institutional Culture on the email address: m.buso@ru.ac.za

LEGAL AID

Talk to their trained staff at no charge if you feel you need legal assistance of any kind. +(27)46 622 9301.



POST

Overseas mail can take between 10 and 14 days to arrive. Parcels are likely to be inspected by customs and high charges are often levied by customs on the value of parcels entering the country. We recommend that for all parcels sent, the sender gets a tracking number to help you trace your parcel.



Should you require items to be posted to you, you can use either your residence's postal address, or the International Office's postal address (See Contacts). If you use the International Office postal address, we will email you when your letter or parcel arrives.

CAMPUS PROTECTION UNIT



Rhodes University is a safe campus. Despite having no visible boundaries between the campus and town, students are safe to walk around all areas of the Rhodes campus at any time of the day or night. The campus is guarded by the Campus Protection Unit (+2746 603 8146) located just next to Hobson Hall. The Unit is open 24 hours per day and provides highly visible patrols on campus. Students can arrange for a guard to walk them home at night from anywhere on campus. There are also panic buttons situated at key points throughout campus. If you are in immediate physical danger, you can either phone the CPU number or press the nearest SOS Button for an immediate response.

Website: [Campus Protection Unit](#)



THE INSTITUTE FOR WATER RESEARCH (IWR)

Students are hosted under the AWaRMN Programme in the Institute for Water Research (IWR) at Rhodes University, which falls under the faculty of Science. Please refer to the map of Rhodes University in Figure 1 on the next page. The area circled in yellow is the IWR, located in the center of campus.

The objective of the IWR is to grow knowledge and experience for the wise use of natural water resources in Southern Africa and beyond. Practical academic research is conducted to meet needs on the ground, including among the most impoverished communities on the continent. This forms part of the efforts to achieve the Sustainable Development Goals (SDG) established by the United Nations (UN) in 2015.



IWR GOALS

The Institute for Water Research (IWR) goals propose that poverty cannot be eradicated without good water and that the benefits from water resources development cannot be improved without fair practices.

The Institute trains honours, masters, and doctoral students in a range of water-related subjects, with the emphasis on fostering the ability to use their knowledge in transdisciplinary ways. The result is that IWR graduates and researchers produce excellent practice and research in specialist areas, such as water governance, hydrology, aquatic ecology, pollution and water quality, and are also resilient, adaptive practitioners well versed in real-world water problems.



For any queries related to AWaRMN in the IWR at Rhodes University,
please use the contact details below:

Administrative enquiries; AWzaRMN Secretariat, Email: awarmnadmin@ru.ac.za

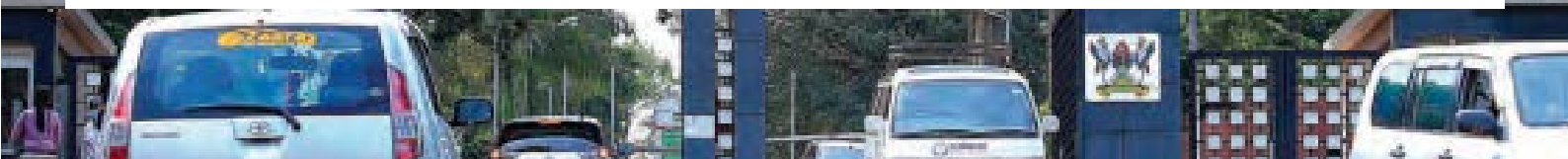
AWaRMN Coordinator, Rhodes University:

Prof. Nelson Odume, Email: n.odume@ru.ac.za

MAKERERE UNIVERSITY



Established in 1922 as a humble technical school, Makerere University is one of the oldest and most prestigious English Universities in Africa. In January of that year, the school, which was later renamed Uganda Technical College, opened its doors to 14 day students who began studying Carpentry, Building and Mechanics. The College soon began offering various other courses in Medical Care, Agriculture, Veterinary Sciences and Teacher Training. It expanded over the years to become a Center for Higher Education in East Africa in 1935.



In 1937, the College started developing into an institution of higher education, offering post-school certificate courses. In 1949, it became a University College affiliated to the University College of London, offering courses leading to the general degrees of its then mother institution. With the establishment of the University of East Africa in June 29, 1963, the special relationship with the University of London came to a close and degrees of the University of East Africa were instituted.



Makerere became an independent national university of the Republic of Uganda, offering undergraduate and postgraduate courses leading to its own awards on 1st July 1970. Makerere University offers not only day but also evening and external study programmes to a student body of about 35,000 undergraduates and 3,000 postgraduates (both Ugandan and foreign).

It is also a very active centre for research. The University transitioned from the Faculty-based to the collegiate system on 1st July 2011. On Friday 30th December 2011, Makerere University officially transformed into a Collegiate University with 9 Constituent Colleges. Since 1st July 2014, 10 Constituent Colleges including the School of Law, have continued operating as semi-autonomous units of the University. Visit the university website: <https://www.mak.ac.ug> for more information



STUDY IN UGANDA

TRAVEL REQUIREMENTS TO UGANDA

Students planning to travel for studies in Uganda MUST have the following

- i. A valid Passport document
- ii. An admission letter
- iii. Invitation letter from the host institution or company
- iv. Insurance policy
- v. Proof of accommodation
- vi. Proof of financial support to sustain your stay in Uganda
- vii. Valid Yellow Fever Immunization card
- viii. Visa (see section 2 below for details)
- ix. Covid-19 check-up results taken within 48 hours



VISAS

a). Any students entering Uganda should have a visa (some countries are exempted and students are advised to see details of exemptions at the following web-link <https://www.immigration.go.ug/content/visas-and-passes>)

b). The visas are obtained at Uganda missions abroad or on arrival at the ports of entry in the country upon payment of the visa & corresponding fees summarized in table below.

However, the costs may change from time to time, please check with Directorate of Citizenship and Immigration at <https://www.immigration.go.ug> for any updates

c). For students, the following payments must be made:

i). Single entry (payable at the Airport) = US\$ 50 – valid for 1 month

ii). Students visa (payable with-in 3 months after entry) = US\$ 100 – valid for one year only

Category/description of visa	Cost
Single entry	US\$ 50 per individual
Multiple entry visa 6-12 months	US\$ 100
Multiple entry visa 24 months	US\$ 150
Multiple entry visa 36 months	US\$ 200
Students (Visa for students who are not nationals of East African)	US\$ 100
East African Tourist Visa	US\$ 100
Residents of Kenya, Rwanda and Uganda travelling to any of the three countries	Fee Nil

UGANDAN CURRENCY AND MONEY

The currency structure of Uganda consists of banknotes and coins and is denoted in Uganda Shilling (UGX). The following denominations are currently in circulation:

Coins

UGX; 50, 100, 200, 500 and 1000.



Banknotes

UGX 1,000 UGX 2,000 UGX 5,000 UGX 10,000 UGX 20,000 and UGX 50,000.



ACCOMMODATION AT MAKERERE UNIVERSITY

Makerere University has twelve Halls of Residence including six for male students and three for female students situated at the main campus. Mulago Hospital Complex, accommodates medical students. Makerere University Agricultural Research Institute - Kabanyolo for third-year students pursuing the degree of Bachelor of Agricultural.



Dag Hammarskjold Hall houses graduate students. All the Halls and hostels host a population of about 5000 resident undergraduates and 100 graduate students i.e. only 16% of students registered to the University. The rest of the students reside outside the campus either in private hostels or commute from homes.

DAG HAMMERSKJOLD POSTGRADUATE HALL



Dag Hammarskjold Post Graduate Hall is named after Dag Hammarskjold Hjalmar Agne Carl, the Secretary General of the United Nations from 1935 to 1961. He was born 1905 and died 1963. Being the only Postgraduate Hall at campus, it stands unique with no strong cultural beliefs and symbols. It was opened in 1972 and was named in recognition of the United Nation Secretary General Dag Hammalskjold Hjalmar Agne Carl from 1953-1961. Dag Hammarskjold is remembered notably for making the United Nations strong in its affairs and helped in establishing its authority to a degree respectable to its member states.



The hall comprises of two isolated blocks namely; Dag Hammar-skjold with a capacity of 101 bed spaces and Mugenyi flats with 18 bed spaces. It is a mixed hall and private, managed by the Department of Dean of Students. The hall also acts as a centre of attachment for all post graduate students of Makerere University and its affiliated institutions; MUBS, Nsamizi and Kinyamasika Seminary.

All university halls have got Beds, Reading tables and Chairs, Television sets connected to DSTV, well stocked canteens, they also provide running water, security, various sports facilities, fumigation services during holidays and rest gardens.

Wardens are in charge of Hall Administration with the help of Chief Custodians and others. There is a Students Common Room (SCR) Cabinet in each hall headed by a Chairperson who together with the Cabinet takes care of students' problems and interests.



Under AWaRMN, the Makerere University team will assist in securing accommodation for all students and staff on mobility. Please contact Prof. George Nyakairu – E-mail: george.nyakairu@mak.ac.ug and Ms. Mariam Kasemiire E-mail: mkasemiire@gmail.com or Mariam.kasemiire@mak.ac.ug for assistance.



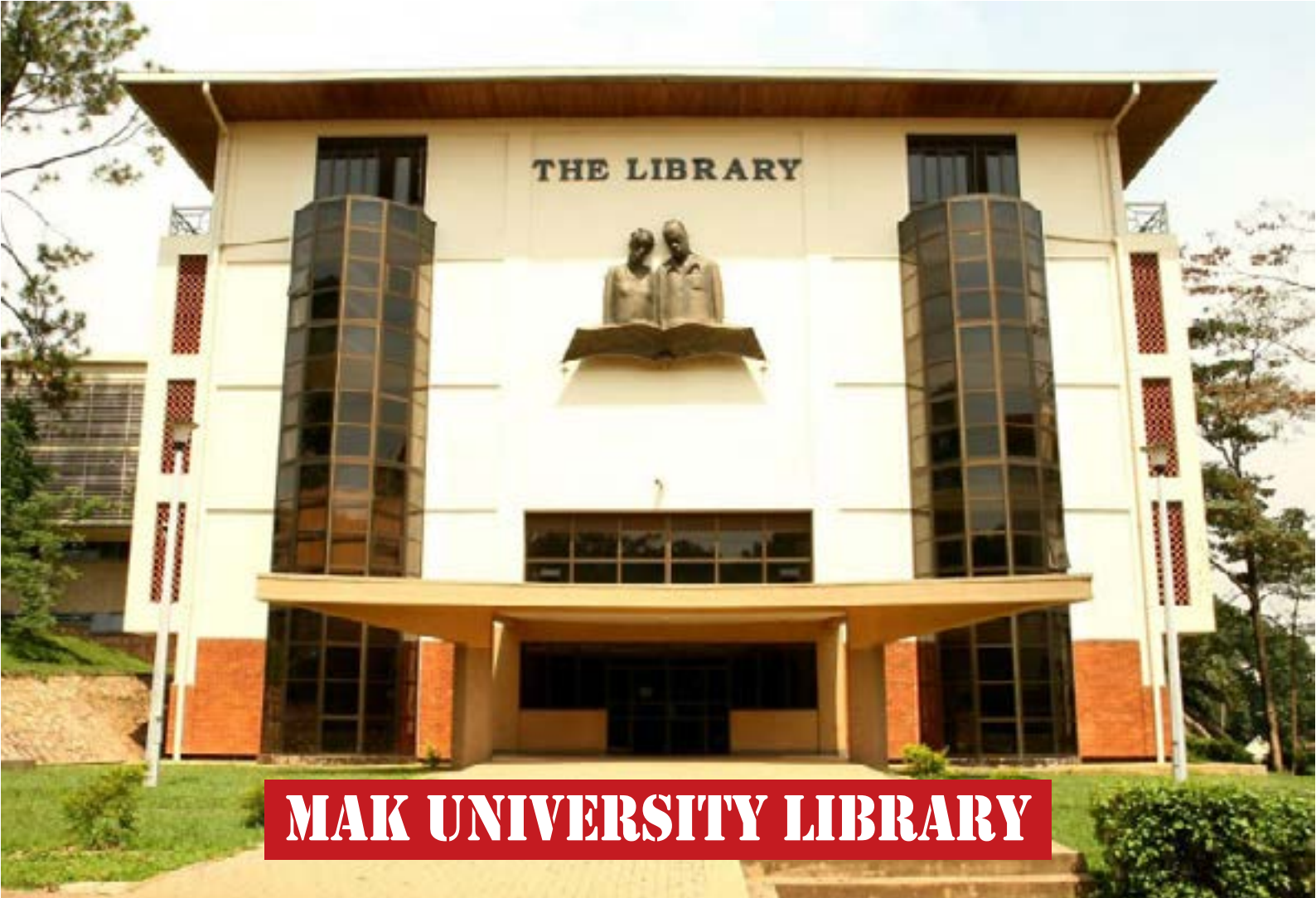
Accommodation in the halls is renewable each year. Breakfast, Lunch and Dinner is served to all resident students at an affordable cost at specified times. Mugenyi Apartments accommodate two persons per apartment and 30% more expensive. The apartments are equipped with a kitchen, two single rooms, living area, dining area and bathroom.

Dean of Students Department with assistance of Wardens ensures that appropriate accommodation and catering services are provided to students in accordance with the prevailing budgets. Both Private and Government Sponsored Students are allocated rooms by respective hall committees chaired by the wardens. Accommodation in the hall is renewable each year.

In addition to accommodation in the Halls on campus, there are a number of private hostels around the university. Some of these hostels are affiliated to the University, that is, the University and the owners have reached an understanding to accommodate University students.



The Dean of Students, Makerere University,
Senate Building, Room 208, Tel: +256 414 532493
Web: <https://dos.mak.ac.ug/accommodation>
Dag Hammarskjold Hall, Tel +256 414534880



At the centre of the University is the Library system comprising of the Main Library, which is situated at Makerere University Main Campus. It was constructed in 1959 with a total area of 4,000 square metres and was extended in 1962, 1972 and 2006. The extensions increased the area to 12,000 square metres with a seating capacity of over 2,800..

The Main Library currently has eight sections namely: Technical Services, Periodicals/Serials, Reference and Circulation (including the Law collection and IDA/Basic textbook Reserve collection), Africana Section, Information and Communication Technology (ICT), Microfilming and Digitisation, Book Bank and Bindery.

At the Library we offer a number of different services to ease information access for our users, i.e. External Users, Library Electronic Resources and Document Delivery Service all on Website: <https://mulib.mak.ac.ug>

SECURITY



Makerere University is home to a fully fledged Police Station with officers of the Uganda Police Force who regularly patrol the campus. The Police Officers work closely with Campus Security personnel to maintain law and order as well as main security checks at the campus and building entrances. The Chief Security Officer, who reports to the Deputy Vice Chancellor (Finance and Administration), is the overall in-charge of Campus security. He is assisted by the OC Station Makerere University Police as well as other Deputies.

Kampala city has some isolated pockets of insecurity, therefore caution must be taken when moving around the city. Students are advised to always carry their identity cards for ease of reference.

The Chief Security Officer – Makerere University:

ACP Abaine Enock

Tel: +256 414 531344

Mob: +256 714 629993

OC Station - Makerere University Police:

Kasibante Dennis Nyanzi

Tel: +256 414 531200

Mob: +256 718 792486

Website: <https://www.mak.ac.ug/university-services/campus-security>



Self and Property

- (a) Every student is advised to remain security conscious all the time while on or off the University premises;
- (b) Every student is responsible for the security of personal and University property while at the University.
- (c) It shall be an offence for a student to steal property from either other students, members of the general public or the University.
- (d) All cases of insecurity relating to self and property shall be reported to a relevant authority.

Mechanically Propelled Vehicles and Pedal Cycles

- (a) A student shall keep and maintain a motor vehicle (including scooters, bicycles and motor cycles) at the University Campuses at his/ her own risk.
- (b) No vehicle shall be driven on any of the University roads at more than 32 km/h
- (c) Every student motorist and cyclist shall abide by the University Regulations relating to parking and driving/ riding.

MAK UNIVERSITY HEALTH SERVICES



Makerere University Health Services (MakHS) refers to services offered by Makerere University Hospital, the Dental School and Satellite clinics at Kabanyolo and Jinja campuses. Makerere University Hospital has been in existence since 1978 and has served not only as a center for providing healthcare services but also as a center for training, research.

The Hospital is managed by Makerere University College of Health Sciences (MakCHS) and all CHS departments are reflected at the Hospital and highly supported by professionals from the College of Health Sciences (CHS). MakCHS (former Makerere Medical School) is a leading College in training, research and health care practices in Africa.





HEALTH AND SAFETY

Health

(a) Every student shall, upon joining the University, register with the University Hospital and be subjected to a medical examination.

(b) A student who feels unwell shall be under obligation to seek medical attention.

(c) A student who must miss a lecture, tutorial, practical, examination, defence, presentation or any other formal academic engagement, on medical grounds, shall notify the lecturer concerned in writing, keep a copy of the notification for future reference and follow it up by submitting authenticated medical documents.

(d) A student who receives medical attention at a medical facility other than the University Hospital shall, on return, report and submit records to the Director of the University Hospital for authentication.

(e) A student who contracts a contagious disease shall on the advice of the Director, University Hospital, withdraw from the University community until he/she recovers.

(f) Contravention of any of these regulations shall lead to disciplinary action.

HIV/AIDS

Every student shall abide by the University HIV/AIDS policy.

Death

Death of a student shall be reported to the Dean of Students and treated in accordance with existing University policy.

Consumption of Drugs and Alcohol

(a) No student shall possess, peddle or consume any intoxicating drugs unless such consumption has been prescribed by a recognized Medical Officer.

(b) Irresponsible consumption of alcohol in disregard of personal health and welfare, peace and tranquillity in the University or personal financial ability, shall constitute an offence for which a student shall be liable to disciplinary proceedings.



Cleanliness

(a) Every student shall maintain high standards of personal hygiene.

(b) Every student shall keep his/her room and all premises of the University to the highest standard of cleanliness.

(c) Any student who litters his/her room or other premises of the University shall be guilty of an offence for which he/she shall be liable for disciplinary action.

Person Identification

(a) Every student must carry on his/ her person a valid University Identity Card, obtained from the Academic Registrar, at all times whether within or outside the University.

(b) Any student who loses his/her Identity Card must report immediately first to his/her Warden and to the Police.

(c) A student who has lost his/her Identity Card must take steps immediately to have it replaced within two weeks, beyond which one shall be guilty of the offence of negligence.

Persons with Disability

(a) Every student shall recognise and respect the rights of persons with disabilities.

(b) A student shall not make fun of, tease or otherwise behave in a manner that renders a person with disability uncomfortable.



UNIVERSITY HOSPITAL LOCATION

The University Hospital is located on Bataka Road, just off Gaddafi Road as you branch off from Makerere Hill Road, in Kampala Central Division, about 2 kilometers (1 mi), southwest of Makerere University College of Health Sciences main campus. The coordinates of Makerere University Hospital are 0°19'40.0"N, 32°34'15.0"E (Latitude: 0.327771; Longitude: 32.570843).



Contact information

P.O. Box 7062, Kampala, Uganda

Tel: +256414-541577/ +256 - 414 542922

Facebook: @MakerereHospital·Hospital

Twitter: @MakerereHosp

Website: <https://www.mak.ac.ug/ervices/university-hospital>



RECREATION ACTIVITIES

There are number of recreation and sports activities at the University. The Department of Sports and Recreation offers welfare and sports skills services to the students through a comprehensive, dynamic and exciting Inter-Hall Sports Championships scheduled to take place during the First Semester of the each academic year. The games include: Track and Field Athletics, Mini-Marathon, Badminton, Swimming, Basketball, Table Tennis, Chess, Tennis, Cross-country, Volleyball, Football, Walking, Hockey, Rugby, Net-ball (only for Women).



University Students are also involved in various National and International Sport Competitions. Theses include: East African University Games, East, Central and Southern Africa University Games, All Africa University Games and World University Games.

THE SPORTS UNIT



The Sports Unit is headed by the Senior Sports Tutor who is assisted by the Sports Tutors.

The following duties are performed by them: organising the inter-hall competitions, staff sports activities(within and outside the University), maintenance of the sports grounds and the swimming pool, the management of sports equipment, administering first aid in case of accidents during games, ensuring security of the unit and other related issues.

Games /recreational activities are handled in the unit under the Dean of students' office which provides sports and recreation activities. Some of the sports and recreation activities provided are: Football, Swimming, Rugby, Squash, Basket Ball, Table Tennis etc . The Dean of students' Department is responsible for the provision and maintenance of sports facilities. Visit the Dean of Students' website: <https://dos.mak.ac.ug> for more details.

MAK SPORTS REGULATIONS



- (1) Students' behaviour during sporting activities shall be governed by the general University Regulations and those of the University Sports and Games Union.
- (2) Any student (or group of students) who attacks a Games Official or Referee or fights with another student at a match or interrupts a match shall be guilty of an offence.
- (3) It shall be an offence for any student to make use of sports facilities without obtaining permission from the relevant authority.
- (4) All University sports equipment shall be handled with care both within and outside the Games Union stores.
- (5) A student who loses or damages sports equipment, uniforms or facilities shall repair or replace them.
- (6) No student shall engage in any hazardous activity in the guise of sports, e.g. risky use of sports equipment and facilities or use of unsafe equipment.
- (7) Any student who contravenes the above regulations shall be subjected to disciplinary action.



SEXUAL HARASSMENT PENALTY

A person found guilty of sexual harassment may, depending on the gravity of the offence, be subject to a written warning, counselling, restraint, apology, compensation to the aggrieved, a fine, suspension, demotion, dismissal or a criminal investigation and prosecution.

The directorate runs policy dissemination and sensitisation seminars about sexual harassment to empower learners and staff with the knowledge and skills to prevent, resist and report incidents. The directorate currently provides support to other universities to develop their own policies against the vice. The revised policy against sexual harassment is evidently beginning to bear fruits. Visit Website: <https://policies.mak.ac.ug/sites/default/files/policies/policy-and-regulations-against-sexual-harassment-2018.pdf>

COUNSELING & GUIDANCE

The Counselling and Guidance Centre helps to address personal or emotional challenges that may affect you while studying or working in Makerere University. The Counselling and Guidance Centre works closely with all university units to enable students realize their academic and personal potential and to assist staff in addressing psychological issues that may affect them in living worthy and productive lives.



The centre provides services to enhance academic success and further educational goals for Makerere University students. The Counselling and Guidance Centre provides several services including: Individual Counselling, Career Guidance and Counselling, Academic support services, Group Counselling, Organising outreaches to halls of residence and hostels, Organising seminars and workshops for students and staff, Self-help print and online materials and Staff services on <https://www.mak.ac.ug/services/counselling-and-guidance>.



All student emails created through this portal prior to the **8th of March 2021** were discontinued due to undesirable technical consequences. All affected students are required to **re-activate** their emails through this portal and **update** their profiles in the different University systems eg Muele where the discontinued emails had been used & also note the change from @student.mak.ac.ug to @students.mak.ac.ug. Continuing students with college based emails e.g. @cis.mak.ac.ug, @chuss.mak.ac.ug etc. will be required to migrate to the new student email domain (@students.mak.ac.ug) at a future date that will be communicated by DICTS once the phased migration of all University staff is finished. DICTS highly regrets any inconvenience caused by the changes. Our [online Help Desk](#) remains open for any queries that may arise.

Choose an Account Type



MAKERERE ICT SERVICES

[Help me](#) | [Facebook](#) | [Twitter](#)

HOW TO CREATE YOUR EMAIL ADDRESS

Steps on How To Create Your Email Address

- 1) Type "<https://sso.mak.ac.ug/>" in your browser (address bar) and it will redirect you to a page as shown above;
- 2) Choose a "Student account" by clicking it, proceed to "activate my webmail account". This will only work for those that have enrolled with the ACMIS student portal. If not, please enroll via <https://student.mak.ac.ug/>. It will take you 30 minutes, more or less.

To find out more, please read from this link <https://answers.mak.ac.ug/email/how-create-mak-webmail-account> or visit <http://dicts.mak.ac.ug> for any technical assistance.

NOTE: If you ever forget your password or would love to change it due to a compromised account, please follow the instructions in the link below to change/recover your password

<https://answers.mak.ac.ug/email/how-recover-your-forgotten-webmail-password>

ACCESSING WIFI: MAK AIR



Accessing Makerere University's WiFi with student email and password involves the following steps:

1. Look for MAKAIR SSID
2. Connect to it by clicking MAKAIR
3. It will open up and ask for your email address and password
4. Enter the password you use to log into your email address in the password field
5. The email address should be a Makerere email address with @students.mak.ac.ug domain.

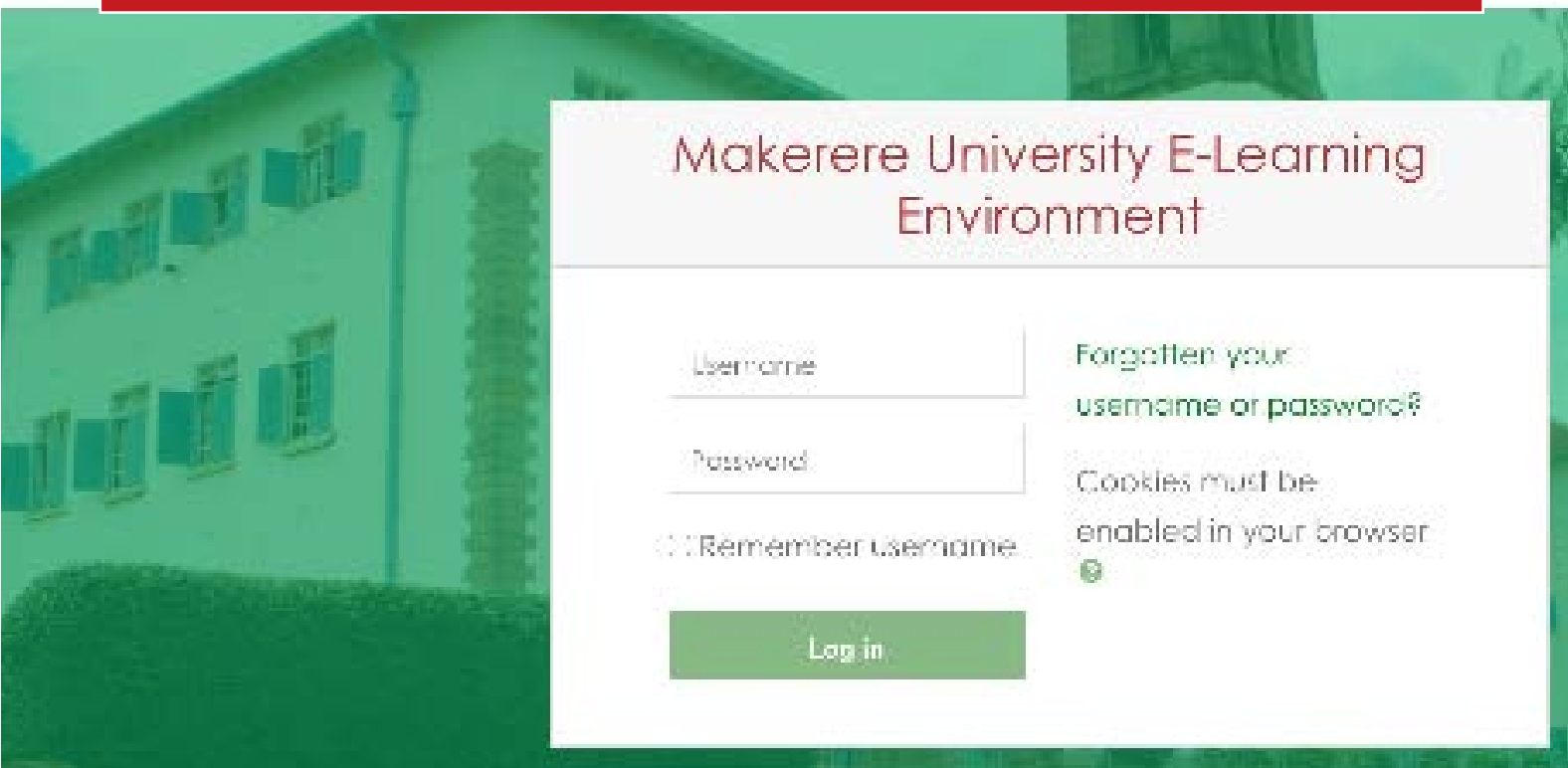
Visit the link below for a video on how access mak air.

https://www.youtube.com/watch?v=lmoHTu_Z2_w





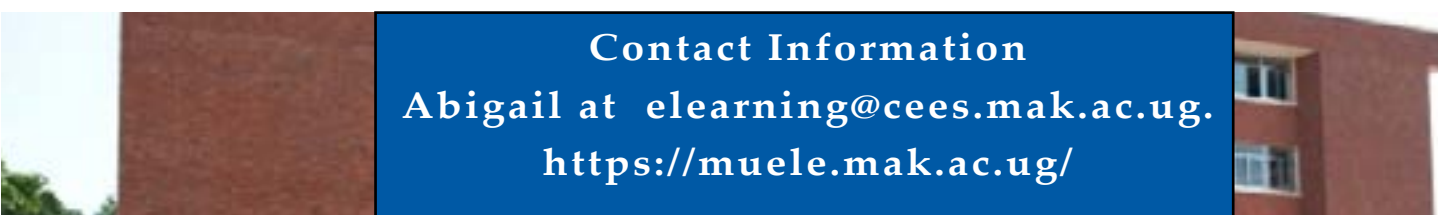
MAKERERE UNIVERSITY E-LEARNING ENVIRONMENT



MUELE (Makerere University E-Learning Environment) is run by E-Learning Department, under CEES (College of Education and External Studies), Makerere University. This platform has been set up and update by the Directorate for ICT Support (DICTS).

Students without webmail (Makerere Email Addresses) accounts should visit: <https://sso.mak.ac.ug> in order to create one which will be used to access MUELE.

For users who already have accounts in MUELE with non-Makerere emails, the system will prompt you at login to change to a Makerere email. Please make the necessary adjustment. New users will be prompted for a Makerere email address during account creation.



Contact Information
Abigail at elearning@cees.mak.ac.ug.
<https://muele.mak.ac.ug/>

FOODS AND DOMESTIC SHOPS



Makerere University is surrounded by five business suburbs: Wandegeya to the East (Near to Dag Hall); Karelwe to the North East, Bwaise to the North, Kasubi to the West and Nakulabye to the South West. In these centres, you can find food kiosks, hotels and can buy all the domestic requirements.

Uganda generally, has a variety of food items ranging from Green Bananas (locally called Matooke), Sweet Banana, Casava, Sweet Potatoes, Potatoes, Maize flour, Millet flour, Wheat flour (famous for making Chapatis and Rollex) to imported processed foods. In addition the country is rich in vegetables and meat-based products. Other food items and dishes of various countries including from Ethiopian Njara, Japanese Sushi, Hungarian/Austrian Goulash etc. are also available at specific markets.





Public transport (taxis and Motorcycles – locally known as Boda Boda and Matatus) are not allowed within the University. Therefore, movement within the university is basically by foot or private vehicles. Outside the university, however, different modes of transport are available. Students residing in hostels outside the university use hostel buses to the university.

Kampala is the commercial and administrative capital of Uganda spread over more than twenty hills from the originally seven hills of Mengo, Rubaga, Namirembe, Makerere, Kololo, Nakasero, and Old Kampala. The city is located at an altitude of 1,180m above sea level, with pleasant tropic weather, with annual temperatures averaging of 17°C (minimum) and 27°C (maximum). The city receives significant rainfall throughout the year¹⁰.





CLOTHES

All persons are advised to carry a mixture of clothing: warm clothes during high-rain seasons (April – June) and light clothes in low-rainy seasons (Dec – March, July - August). However, the wet-dry patterns may change

COVID-19 SOPS

All students are required to carry face-masks and sanitizers as well as following the Covid-19 standard operating procedures.



AWARMN CONTACTS

Prof. George Nyakairu

E-mail: george.nyakairu@mak.ac.ug

Tel: +256- 705372575

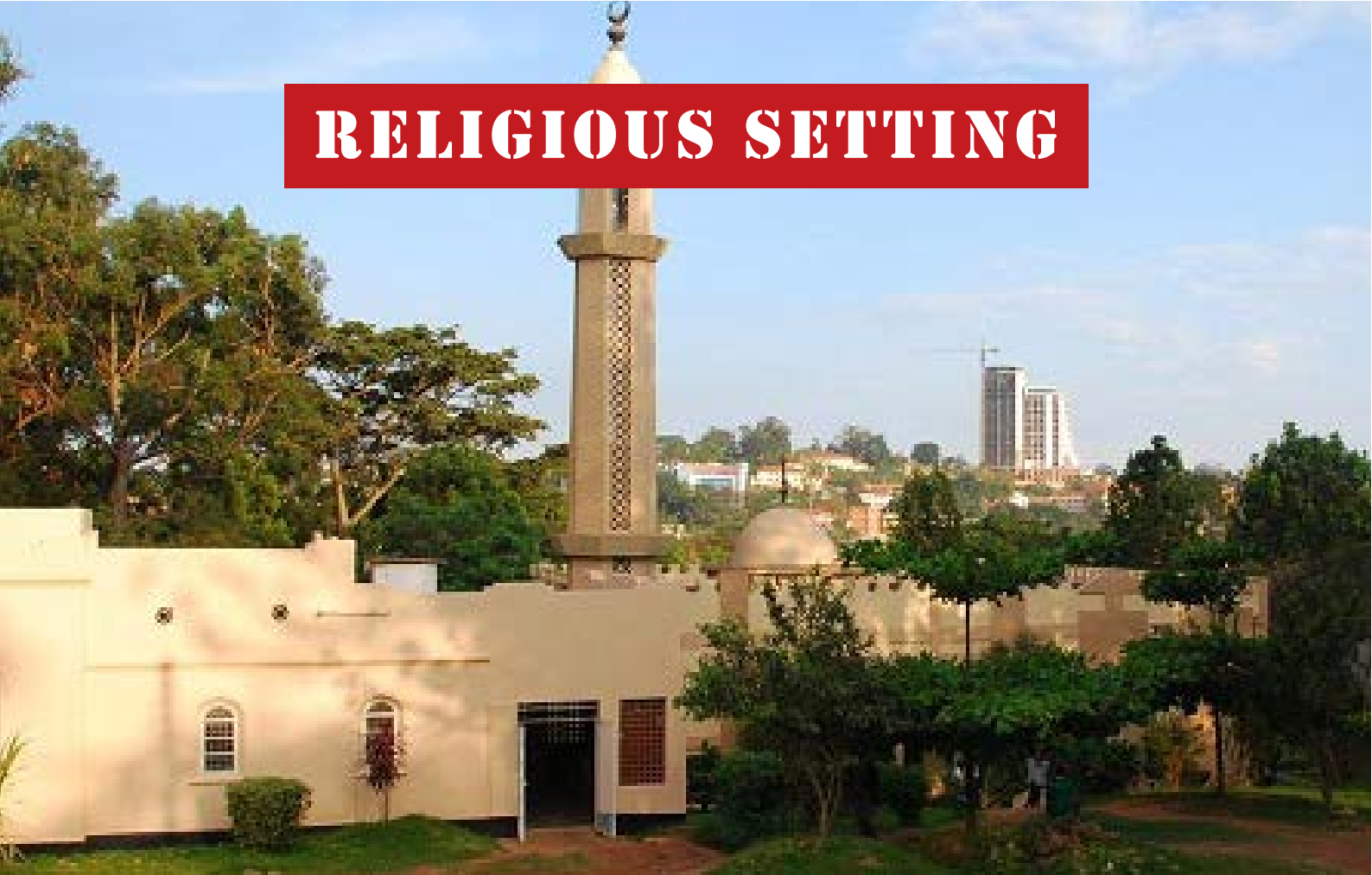
Websites:

<https://www.mak.ac.ug/>

<https://www.cns.mak.ac.ug/>

<https://www.chemistry.mak.ac.ug>

RELIGIOUS SETTING



The university is a multi religious institution that offers services to both muslim and christian students in their respective places of worship in the Mosque for muslims, St. Francis Chapel to Protestants and St. Augustine Chapel to Roman Catholics. The mosque is headed by the Imaam while the Chaplains head the Catholic and Anglican Chaplaincies. These spiritual leaders are in charge of the spiritual affairs of the students and the staff. They are assisted by supporting staff in the administration of their respective areas/affairs.

MAKERERE UNIVERSITY MOSQUE



At Makerere University Mosque both muslim staff and students conduct their five daily prayers as well as Juma (Congregational) Prayers at 1. 00 p.m. (Fridays). The University Mosque is located near the university Main Gate.



ST FRANCIS CHAPEL

St Francis Chapel (Anglicans and Protestants) Service run every Sunday at these times

English Service: 7.00 am, 9.00 am and 11.00 am

Lugbara Service: 1.00 pm

Youth Service: 4.00 pm

St Francis Chapel is located behind the Main Administration Building. Website: <http://stfrancischapelmakerere.org/>



ST AUGUSTINE CHAPEL

St Augustine Chapel (Roman Catholics)

Holy Mass for Roman Catholics runs every Sunday at these times

First Mass: 7.30 am

Second Mass: 9.00 am

Third Mass: 11.00am

Fourth Mass: 6.00pm

St Augustine Chapel is located behind the Main Administration Building

FEDERAL UNIVERSITY OF TECHNOLOGY, MINNA



The Federal University of Technology, Minna is a Federal Government owned University in Nigeria. It was established on 1st February, 1983. The objective for its establishment was to give effect to the Nation's drive for the much-needed self-reliance in Science, Engineering and especially Technology. It is a specialized University of Technology.

At inception, the University acquired on a permanent basis, the facilities of the former Government Teachers' College, Bosso which now serves as the Bosso Campus of the University. It has undergone a tremendous face-lift and wears a beautiful outlook befitting a modern university. The University acquired 10,650 hectares of land at Gidan-Kwano, along the Minna - Kataregi - Bida Road as its permanent site to cater for the inevitable expansion envisaged.



STUDY IN NIGERIA



Travel requirements to Nigeria

Travel requirements to Nigeria include;

- a). A valid travel document (passport)
- b). Letter of invitation from host institution
- c). Proof of admission (admission letter)
- d). An insurance policy cover
- e). Proof of accommodation
- f). Proof of adequate academic finance/sponsorship
- g). Covid-19 results taken not more than 48 hours
- h). Yellow Fever Immunization card
- i). Valid Visa





ENTRY VISAS

- a). Visit the Home page of Nigeria Immigration Portal.
- b). Locate & click on the appropriate application form to start the process:
- c). Entry Visa/Freezone Application Form.
- d). Fill the Application form; check the ' I ACCEPT FULL RESPONSIBILITY FOR THE INFORMATION PROVIDED IN THIS FORM ' check box.
- e). Click on 'Submit Application' button to view 'Applicant details' page.
- f). Click on "Proceed to Online Payment"
- g). Click to select Payment Currency "Pay in Dollars" option then Click on 'Continue' button.

For Payment Outside of Nigeria

If you select a processing country other than Nigeria, your payment will be in US Dollars. You will be re-directed to an approved payment platform to complete your application and make your payment in US Dollars.

a). Please take your visa payment receipts, passport and other documents to the Nigerian Embassy in your Country of abode on your slated interview date for your Visa.

b). Please note that you can reschedule your interview date to the next available date by sending your Application ID, Reference no and the proposed date to our support mail address nis-support@newworkssolution.com

EMBASSY VISA FEES

	SINGLE ENTRY	MULTIPLE ENTRY	TWP FEES	STR VISA FEES
Algeria	US\$50	US\$50	US\$50	US\$50
Angola	US\$2	US\$2* No	US\$2	US\$2
Azerbaijan	US\$78	US\$78	US\$78	US\$78
Bangladesh	US\$253	US\$253	US\$253	US\$253
Benin	US\$0	US\$0	US\$0	US\$0
Botswana	US\$114	US\$114	US\$114	US\$114
Brazil	US\$20	US\$20* No	US\$20	US\$20
Burkina Faso	US\$0	US\$0	US\$0	US\$0
Burundi	US\$100	US\$200	US\$250	US\$250
Cambodia	US\$68	US\$68* No	US\$68	US\$68
Cameroon	US\$3	US\$3* No	US\$111	US\$111
Cape Verde	US\$0	US\$0	US\$0	US\$0
Central African Republic	US\$67	US\$335	US\$335	US\$335
Chad	US\$3	US\$3* No	US\$3	US\$3
Congo	US\$111	US\$224	US\$224	US\$224
Costa Rica	US\$20	US\$20* No	US\$20	US\$20
Democratic Republic of the Congo	US\$3	US\$3* No	US\$3	US\$3

EMBASSY VISA FEES

Egypt	US\$45	US\$45* No	US\$45	US\$45
Equatorial Guinea	US\$3	US\$3* No	US\$3	US\$3
Ethiopia	US\$2	US\$2* No	US\$2	US\$2
Gabon	US\$2	US\$2* No	US\$2	US\$2
Gambia	US\$0	US\$0	US\$0	US\$0
Ghana	US\$0	US\$0	US\$0	US\$0
Guinea	US\$0	US\$0	US\$0	US\$0
Guinea-Bissau	US\$0	US\$0	US\$0	US\$0
Kiribati	US\$3	US\$3* No	US\$3	US\$3
Kosovo	US\$50	US\$100	US\$100	US\$100
Lebanon	US\$100	US\$200	US\$250	US\$250
Lesotho	US\$64	US\$64	US\$64	US\$64
Liberia	Gratis	Gratis	Gratis	Gratis
Libya	US\$26	US\$40	US\$100	US\$100
Madagascar	US\$3	US\$3* No	US\$3	US\$3
Malawi	US\$39	US\$39* No	US\$39	US\$39
Mali	US\$0	US\$0	US\$0	US\$0
Mexico	US\$32	US\$32	US\$32	US\$32
Morocco	US\$89	US\$266	US\$266	US\$266
Mozambique	US\$50	US\$50	US\$50	US\$50
Namibia	US\$66	US\$66	US\$66	US\$66
Niger	US\$0	US\$0	US\$0	US\$0
Rwanda	US\$4	US\$4	US\$4	US\$4
Senegal	US\$0	US\$0	US\$0	US\$0

EMBASSY VISA FEES

Sierra Leone	Gratis	Gratis	Gratis	Gratis
South Africa	US\$58	US\$103	US\$205	US\$205
Sudan	US\$2	US\$2	US\$2	US\$2
Swaziland	US\$58	US\$58* No	US\$58	US\$58
Tanzania	US\$29	US\$29	US\$29	US\$29
Togo	US\$0	US\$0	US\$0	US\$0
Tunisia	US\$32	US\$32* No	US\$32	US\$32
Uganda	US\$2	US\$2* No	US\$2	US\$2
Zambia	US\$6	US\$6	US\$6	US\$6
Zimbabwe	US\$50	US\$140	US\$140	US\$140



ACCOMMODATION AT FEDERAL UNIVERSITY OF TECHNOLOGY, MINNA (FUTMX)



FUTMx boasts of well-furnished hostels for both undergraduate and post-graduate students at both Campuses of the University. However, there is limited number of spaces; not all students are able to be accommodated in the school hostel. Usually hostels are allocated on first-come-first-serve basis. Hostels are renewed yearly. All hostel apartments have dedicated spaces for making meals. Hostels are also available away from the University environment (off campus).

However, hostels outside the University are owned by individuals, and as such, are not under the control of the University management. Students who prefer to live in these hostels are expected to pay to the owners of the hostels, even while they are also made to strictly adhere to the terms of the tenancy as contained in the tenancy agreement signed prior to the acquisition of the apartments. Although these hostels around the University vicinity are relatively secure, the University management may not guarantee the safety of the students, hence the reason the University management discourages this practice.

For AWaRMN, LMC at FUTMx is saddled with the responsibility of securing apartments for both staff and students. Therefore all AWaRMN students will be accommodated in the hostels situated inside the University community (University hostels).

FOOD AND GROCERY STORES

FUTMx has loads of food and grocery stores located both inside and outside the University community, from which basic items can be bought at cheaper rates. Given that Niger State, where FUTMx is located, is a major producer of food items in Nigeria, assorted kinds of African foods are available at cheaper rates.



TRANSPORTATION

Public/commercial means of transportation (including motorbykes) are not allowed entry into the University community. Therefore, movements inside the University are achieved by foot or private means of transportation. Nevertheless, the University has luxury buses that convey staff and students in-and -out of the University. Furthermore, all forms of transportation are available outside the University community.



THE CITY OF MINNA



Minna is a city (estimated population 304,113 in 2007) in Middle Belt Nigeria. It is the capital of Niger State, one of Nigeria's 36 federal states. It consists of 2 major ethnic groups: the Nupe and the Gwari. Archaeological evidence suggests settlement in the area dates back to about 47,000–37,000 years ago. Muslim culture filtered into Minna by way of the ancient Saharan trade routes and the city contains many mosques including Minna Central Mosque and Muslim organizations like the Islamic Education Trust, Minna, Muslim Students' Society of Nigeria - Minna Area Council (MS-SN-MNAC), Da'watu-Ilallahi-Wa-Rasulihi Association (DAWRA), e.t.c. Christianity is the second major population in Niger State, where Sharia is valid. Faith Church, a Grace Baptist Church, Nupe Kalvari Churches, Anglican Churches, ECWA Churches, Baptist Churches, Victory Christian Church, The Apostolic Church and many others too numerous to mention.

Minna is the home of Nigeria's former military President Gen. Ibrahim B. Babangida, and of former Head of State Gen. Abdulsalami Abubakar. Dr. Mu'azu Babangida Aliyu was the former governor of Niger State.

CHOICE OF CLOTHING

The city of Minna is usually very hot during dry seasons and very cold during wet/rainy seasons. The area comprises the characteristic tropical climate of two distinct seasons: the dry season (November–March) and the wet season (April–October). In the light of this revelation, AWaRMN staff and students are advised to have a mixture of clothing to suit the prevailing climate.



COVID-19 PROTOCOLS

All staff, students, and visitors of FUTMx are mandated to strictly adhere to covid-19 preventive measures, including, but not limited to, wearing of face-masks, regular washing of hands, and the use of sanitizers.





RECREATION AND LEISURE

Minna is a city with so much to offer that you will surely spend a great time around. Whether you are staying here for good or not it is the location of your leisure travel with many parks and recreation possibilities to make the most of your stay here. National parks are the most popular choice among tourists since they allow you to enjoy nature and observe wildlife from a close-up.

Other interesting options might be booking a travel tour with a guide, visiting sports clubs with great facilities, safari or hunting packages, paintball sessions and other games. Safaris and game viewing can be a lifechanging experience. Restaurants, bars and markets in the cities. Enjoy some Nigerian gastronomy and get up to dance. Shopping! Enjoy wonderful street markets with genuine African items as well as going shopping to big shopping centers. Tours around the city that allow you to see its life style and culture.



SECURITY

Minna city is akin to typical African cities, with relative security alongside some pockets of insecurity too. Hence, staff and students must be cautious about moving at odd times. Staff and students are therefore, advised to walk about with their University Identity cards.



CONTACTS

Prof. Francis Arimoro
Email: francisarimoro@gmail.com
Tel: +2348035615424

Dr. Unique N. Keke
Email: uniquekn@gmail.com / n.keke@futminna.edu.ng
Tel: +2347030379950

NATIONAL SCHOOL OF HYDRAULICS



The National School of Hydraulics of BLIDA, is a Public Institution of Higher Education under the supervision of the Ministry of Higher Education and Scientific Research. It was established in 1972 under the name of the Institute of Hydrotechnics as an Institute of Hydro Bonification. Then set up as a national higher school of hydraulics. Nearly 15,000 engineers were trained including more than 100 African graduates in various hydraulic majors. The school has contributed to the national and African scale of disseminating knowledge and skills in the field of hydraulic engineering and water management.

Transformation of the National School of Hydraulics into a non-university school by Executive Decree No. 08-217 of 11 Rajab 1429 corresponding to July 14, 2008 Organization of the establishment in higher school by executive decree n ° 16-176 of 9 Ramadhan 1437 corresponding to June 14, 2016 fixing status -type of the higher school

STUDY IN ALGERIA



Travel Requirements to ALgeria

- Passport with at least 6 months validity.
- Health card indicating a negative RT-PCR of less than 36 hours.
- Payment of containment costs before entering Algerian territory (5 days) (<https://airalgerie.dz/>)
- Prepayment of COVID 19 screening fees after containment.





List of documents required to obtain a study visa in Algeria:

- Acceptance letter from Algerian University;
- Copy of scholarship notification letter if any or Statement of financial resources or proof of income (bank statement);
- Passport and a copy of the first page (the passport should be valid for at least six months);
- Copy of the ID;
- Two (02) photos;
- Two (02) copies of application form.





CURRENCY AND MONEY

The local currency is the Algerian dinar, most transactions are made in cash. Many ATMs accept international cards (visa, mastercard, etc.) for withdrawals in local currency. It is recommended that prospective international students have a bank account in Algeria in order to avoid bank service charges.

LEISURE ACTIVITIES

The city of Blida is known for the Chrea National Park located at an altitude of over 1,400 meters, whose peaks are covered with snow for several weeks in winter.



SECURITY

Blida has some isolated pockets of insecurity; therefore, caution must be taken when moving around the city. Students are advised to always carry their identity cards for ease of reference.

MEDICAL SERVICES

Blida has 4 public university hospital establishments, as well as numerous polyclinics and treatment rooms all public with free care for emergencies and very modest payment for medical consultations. There are also many private practitioners with much higher fees than in the public sector.

WEATHER



The climate of Blida is quite mild in winter, however temperatures close to zero are not uncommon in winter (especially in the morning). The winter period is quite rainy, but it is not uncommon to have rain the other months of the year with the exception of the summer season. Summer in blida is quite hot and humid with temperatures exceeding 30 ° C during the months from June to September. it is recommended to bring various types of clothing.

HISTORY AND FACILITIES



ENSH has 12 educational laboratories (hydraulics, civil engineering, chemistry, etc.) and two research laboratories. The ENSH library contains more than 17,000 books and numerous online scientific publishers (ScienceDirect, Springer, JSTOR, Taylor and Francis, etc.). The entire campus is covered with free access WIFI network and has several computer rooms for tutorials / practical work. Visit the ENSH web site for more information.



DOCTORATE STUDENTS

Doctoral students are housed in the buildings housing the research laboratories, a 5-minute walk from the main site. However, it also has a dedicated room at the main site level.



HEALTH SERVICES

The ENSH has a doctor's office and a pharmacy for rapid treatment of all students, teachers and staff.

ACCOMMODATION

Accommodation is managed by the services of university works (ONOU) and all students registered with the ENSH have the right to have a room in the university residences near the ENSH (distant between 5 to 15 minutes by walk of the main site).



FOOD AND SHOPPING

ENSH straddles the towns of Ouled Yaich and Guerrouaou, Blida city center accessible by public transport or university bus 25 minutes from ENSH. However, there are all kinds of shops and restaurants in the city center of Ouled Yaich, 5 minutes travel by bus. The university works department also offers a catering service at the ENSH site.



TRANSPORT

The city of Blida is located 50 km from the city of Algiers, the capital of the country, and 50 minutes from Houari Boumédiène international airport. It can be reached directly by taxi or ride-hailing service service (Yassir, TemTem, etc.), by bus or by train via Algiers center towards Blida (1h30).

(<https://www.sntf.dz/>)

COVID-19 PROTECTIVE MEASURES

The ENSH applies a strict health protocol with wearing a mask, physical distancing (a maximum of 15 students per 50 m²), and a hydro-alcoholic gel dispensing terminal.



UNIVERSITY OF KINSHASA (UNIKIN)



The University of Kinshasa- UNIKIN is located in Kinshasa, Democratic Republic of Congo. It is the biggest and the first established University in DRC since 1954. The University is built up hill south east of Kinshasa from which it takes the name of “Inspired Hill”.

UNIKIN is among the oldest and the biggest University in Africa with its campus spread over 400 ha. Currently, University of Kinshasa has 12 faculties, with about 29 000 students per year. The University was originally known as Lovanium University and took the name of UNIKIN following the reforms that were implemented in 1981.

The history of the University of Kinshasa began in 1924 with the creation of a medical association by the Catholic University of Louvain to deal with health and education in Congo. This initiative led to the creation of the Medical Foundation of the University of Louvain in Congo (FOMULAC) by professors of this university and later, in 1927, the first health establishment built in Kisantu in the Bas-Congo where the first training course for nurses was held.

In 1932, the University of Louvain created a section of Agricultural Sciences on the same site, to which were added a section of administrative and commercial sciences in 1936, and a section of medical assistants in 1937. In 1947, these three sections were grouped together under the name 'Centre Universitaire Congolais de Lovanium', which was transferred from the Kisantu site to the Kimwenza site, and became Lovanium University in 1954.



STUDY IN DR CONGO

Travel Requirements to DR Congo

Travel requirements to the Democratic Republic of Congo (DRC) vary from country to country. Nevertheless, some documents have always been required regardless of the country of origin. These are:

- 1 valid passport for at least 6 months from the day of application for the DR Congo (DRC) visa;
- 2 Recent passport photos;
- 1 Letter of mission issued by the applicant's institution, dated, signed, stamped, and mentioning the reasons for the stay in the DRC and the source of support (accommodation, stay, etc.);
- 1 Attestation of support issued by the DRC's migration services and signed by the host institution;
- 1 Invitation Letter from the host institution, legalized at a municipality and the Ministry of Foreign Affairs in DRC;
- 1 international vaccination booklet: anti-amaril vaccine (yellow fever);
- 1 COVID-19 test carried out on arrival in Kinshasa, even if you have a valid result from another test carried out in your country of origin.



VISAS

The requirements for obtaining a DRC visa vary from country to country. The visa fees vary with regard to the country of origin. There are also some countries whose nationals do not require a visa to enter Congolese territory. That's why it is always advisable to visit the nearest DRC embassy or consulate to obtain all the necessary requirements for obtaining the desired visa.

If a visa cannot be obtained in the country of origin (absence of a Congolese embassy or consulate), a flying visa can be obtained from the migration services in the DRC to facilitate access to the Congolese territory. It is only valid for a few days.

Once in the country, it is possible to obtain a settlement visa for studies.

The visa for studies is valid for one year, and must be renewed before the end of its validity.

The following conditions are required:

- Proof of admission to an approved educational institution in the DRC;
- Legalized undertaking of support and/or proof of a scholarship;
- For researchers, a document approved by the Ministry of Scientific

Research (still valid for at least 3 months).



The costs are as follows:

Invitation legalisation	30 USD
Application form	50 USD
Flying Visa	250 USD
Study visa and administrative fees	275 USD

Note also that all those arriving in the DRC (Congolese or expatriates) are subject to a COVID-19 test, and this test costs USD 45.

The CRREBaC team based at University of Kinshasa (UNIKIN) is available to assist in all the procedures.



ACCOMMODATION

The University of Kinshasa has several categories of accommodation, which can house students and researchers at all levels. In fact, several units have just been rehabilitated, although they have not yet been opened to students.

But several other units continue to house students and other researchers. This is the case of a guesthouse located nearly 2 km from classrooms and other work spaces. It consists of spacious single rooms and common areas including living rooms and a fully equipped kitchen. A monthly subscription is required for accommodation, which does not exceed 170 USD per month (all charges in, including water and electricity) depending on the room. Note that the number of rooms is limited, and things are done on a first come, first served basis.

Apart from this, there are also hotels, guest-houses and other houses for rent outside the campus that can provide accommodation. The UNIKIN campus is a bit larger, so the distance to be covered is even greater.

For students selected under AWaRMN Programme, the CRREBaC team at the University of Kinshasa will assist in securing accommodation, even for other programme staff and researchers on mobility.

CONTACT

Prof. Raphael M. TSHIMANGA raphael.tshimanga@unikin.ac.cd / raphtm@yahoo.fr. Tel.: +243 82 094 94 56

Mr. Felly K. NGANDU felly.ngandu@crrebac.org / felixngandu@yahoo.fr. Tel.: +243 85 27 80 555





MARKETS AND SUPPLY OF BASIC NECESSITIES

Not far from the UNIKIN campus, there are several supply points for basic necessities such as food, cosmetics, electronics, household appliances and others. This is the case of the most popular Rond-point Ngaba, the Mbanza-lemba market, etc.

What is certain is that these markets have a diversity of locally produced and imported organic foods, including tubers, fruits, flour, vegetables, and others, useful for all types of meals.

But there are many other larger markets where other goods and products can easily be found. The assistance of the local team is always available for this.

MOBILITY AND TRANSPORT



Mobility within the UNIKIN campus is achieved by walking, private vehicle or public transport. Public transport is mainly provided by motorcyclists (commonly known here as "WEWA"). The cost of a ride is around 500 CDF to 1000 CDF (about 0.25 USD to 0.5 USD).

Outside the campus, in addition to the WEWA, public transport is provided by taxis, taxi-buses and buses. The use of motorcyclists off campus is strongly discouraged due to the high number of accidents caused by drivers of these two- wheelers.



Kin la belle, Kin Kiese, Lipopo Léopoldville, etc. So many nicknames that define this crazy virgin of almost a century and a half, still young and alive and full of contradictions. Both city and province, administrative, political, economic and cultural centre of the country, Kinshasa bewitches and annoys at the same time. Impetuous and hectic, the megalopolis makes most Africans dream of visiting it at least once, in order to taste the overflowing energy that is its soul and makes it so endearing, just like its inhabitants. With a population of over 10 million, Kinshasa, the capital of the DRC, is the largest French-speaking city in the world and is a city in the midst of renovation. It has a new face with remnants of colonial architecture standing among new structures.

The city covers an area of 9,965 km², consisting of a large plateau (Kwango Plateau), a chain of hills (Ngaliema, Amba, Ngafula Mountains), a plain and swamps on the Malebo Pool. The plain is the most populated part and extends in a crescent shape from Ngaliema Bay in the west to the Kwango Plateau in the east of the Malebo Pool.

Kinshasa has a tropical savannah climate with a dry winter (Aw according to Köppen's classification). The average annual temperature is 25.3°C, and the annual rainfall is 1,273.9 mm. The driest months are July and August with only 3 mm of rainfall and March and April the wettest with 196 mm of rainfall.

Kinshasa is also ideally placed to discover the wonders of Africa's flora and fauna, hike to the magnificent Livingstone Falls and Mount Mangengenge. Take advantage of the parks and tranquil shores of Lac Ma Vallée and the Bonobo Sanctuary to relax but also to admire animals in their protected natural habitat. Kinshasa also has several other tourist sites and atmospheric places, game rooms, gyms and weight rooms.

Kinshasa is just a friendly city!

CLOTHES

All persons are advised to carry a mixture of clothing: warm clothes during high- rain seasons and light clothes in low-rainy.

COVID-19 INSTRUCTIONS

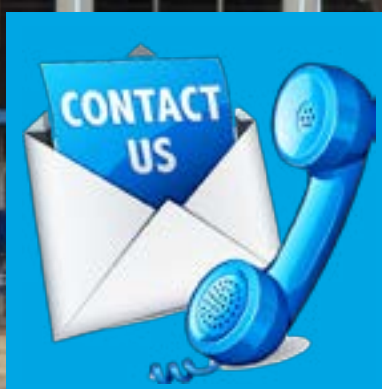
All students are required to strictly adhere to COVID-19 control instructions, including the wearing of masks, frequent hand washing, and the use of hydroalcoholic gels.

SECURITY

As in most large African cities, Kinshasa has some hot spots in terms of insecurity. It is advisable to be very careful when visiting certain parts of the city, and to always walk in groups, especially when it is already dark. It is strongly recommended to always carry identification, especially a student card, when walking around the city.

LOCAL CONTACT

UNIVERSITE DE KINSHASA
BATIMENT ADMINISTRATIF



Prof. Raphael M. TSHIMANGA, Director of the CRREBaC

Email: raphael.tshimanga@unikin.ac.cd / raphtm@yahoo.fr.

Tel.: +243 82 094 94 56

Mr. Felly K. NGANDU, Programme Manager of the Centre

Email: felly.ngandu@crrebac.org / felixngandu@yahoo.fr.

Tel.: +243 85 27 80 555



Funded by the Intra-Africa
Academic Mobility Scheme of
the European Union



Important message to international students/potential applicants:

Please be cautious when receiving any publicity inviting you to apply for an Intra-Africa scholarship or a message to pay a fee to be selected as a scholarship holder. We have been informed of numerous attempted scams. Before giving out any personal data, please always verify that the information comes from a trustworthy source. Please also note that the African Water Resources Mobility Network (AWaRMN) will never solicit payment from candidates in order to benefit from its scholarship. Our scholarships are fully funded by the Intra-Africa Academic Mobility Scheme of the European Union. If you are in doubt regarding the authenticity of any scholarship offer, contact the AWaRMN secretariat at awarmnadmin@ru.ac.za.

