



RHODES UNIVERSITY

*Where leaders learn*

# Young Directors'

## season 2009



### CLOSER

Directed by: **Saint-Francis Tohlang**

Written by: Patrick Marber

Performance Dates: 26 Aug 09, 20:30

28 Aug 09, 19:00

### Revolutionary Road

Directed by: **Natasha Lech**

Written by: Justin Haythe

Performance Dates: 26 Aug 09, 19:00

28 Aug 09, 20:30

### LOVE OF THE NIGHTINGALE

Directed by: **Roshnee Gupta**

Written by: Timberlake Wertenbaker

Performance Dates: 27 Aug 09, 19:00

29 Aug 09, 20:30

### Withnail & I

Directed by: **Byron Davis**

Written by: Bruce Robinson

Performance Dates: 27 Aug 09, 20:30

29 Aug 09, 19:00

[www.ru.ac.za/drama](http://www.ru.ac.za/drama)

Tickets on sale at the Theatre Cafe

The Rhodes University Drama Department  
welcomes you to our

## **Young Directors' Season '09**

26 - 29 August 2009

### **Notes from the course co-ordinator**

**Janet Buckland**

Honours in Directing affirms the work of the theatre director as a creative artist rather than simply an interpreter of literary texts. The course challenges the perception of the director as one who merely “stages” the playwright's vision. Students are encouraged to explore the elements of the theatre event in such a way that they may be brought to creative fruition, in the crafting and presentation of innovative and challenging theatre. Thus, students are expected to be able to select appropriate resource material and research, analyse and develop this material into an arresting theatrical concept which engages the audience in a sophisticated demonstration of all the elements of performance craft and theatre technique. Finally, students are required to organise, co-coordinate and manage the performance to the level of a professionally performed event. All of this within the time limit of 30 minutes!



# Withnail & I

Written by | Bruce Robinson

Directed by | **Byron Davis**

The clown – a helpless victim of fate and character. Ever on the endless search for peace and yet ever the sufferer of hardships to come. Withnail & I is a rich, visceral text that makes Sisyphus's hardship look like “a walk in the park”.

## Cast

Withnail | **Alex Farmer**

'I' | **Lolo Malumo**

Uncle Monty | **Robert Haxton**

Jake the Poacher | **Josh Martin**

Danny | **Roscoe Rantangie**



## Crew

Stage Manager | **Phemelo Monnapula**

Sound Operator | **Mia Arderne**

Lighting Operator | **Alex Higgins**

Design | **Byron Davis**

## Special Thanks

Many thanks to Janet, for not letting me get off easy, Willie Coombs for his undying assistance, Royden Paynter for his genius, Kate Bold for her sheer brilliance, my fellow directors, my magical cast and crew and lastly – chocolate bear, you know what you did. *Enkosi Kakulu*

# Love of the Nightingale

Written by | Timberlake Wertenbaker

Directed by | **Roshnee Gupta**

“Why?” This is the most frightening question because the reason often doesn't justify. And we live in a world where women demand justice.

## Cast

King Pandion | **PJ Waugh**

The Queen | **Chloe Hirschman**

Nurse/Niobe | **Pumelela Nqelenga**

Philomele | **Amy Wilson**

Procne | **Julia Te Reh**

Tereus | **Ryan Hayes**

Itys | **Robin Williams**

Aphrodite | **Juliette Pauling**



## Female Chorus

Phaedra/Hero | **Hannah Lax**

Helen | **Buhle Ngaba**

June | **Martina Gilli**

Iris | **Annie Pollack**

Echo | **Dana Bosch**

## Male Chorus

**Rowan Roux**

**Bryce Woodiwiss**

**Phelo Mthembu**

## Dancers

**Yolisa Nyoka**

**Hannah Lax**

**Buhle Ngaba**

**Nathi Nelani**

## Crew

Stage Manager | Kutloano Kunutu

Assistant Stage Manager | Ayanda Madela

Production Assistant | Francis Mennighe

Costumes | Vivienne Nel

Set Design | Ryan Hayes

# Closer

Written by | Patrick Marber

Directed by | **Saint-Francis Tohlang**

*Closer* is just one of those rare raw gems. It speaks with such honesty about the nature of love and sex, that it reveals how intricate and skewed these facets can be. It maps out the complicated web of characters caught in the matrix of attraction, sex and love.

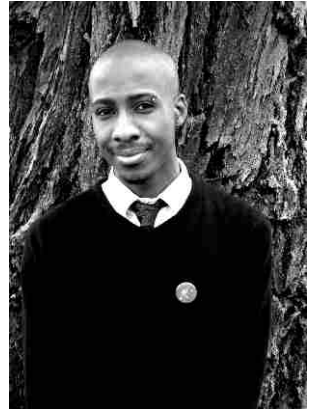
## Cast

Alice | **Chiminae Ball**

Anna | **Nadine Joseph/Candace Gawler**

Dan | **Sebastian Tuinder**

Larry | **Byron Davis**



## Crew

Stage Manager | **Melissa Pentz**

Ass. Stage Manager | **Nomashawekazi Damasane**

Lighting Operator | **Dohne Damons**

Sound Designer | **Kgaugelo Motlafi**

Sound Operator | **Anelisa Ngcibi**

Costume Manager | **Erin Cutts**

Designer | **Saint-Francis Tohlang**

## Backstage

**Mike Chimhini, Avy Maselwa, Rudo Hwami,**

**Vhahangwele NemaKonde, Ntendeni Luvhengo**

**Erin Cutts, Viktoria Marinova**

## Special Credits

Portrait by | **Zukiswa Zimela**

Filming by | **Fathima Simjee**

## Special Thanks

Janet Buckland for pushing me to fully excavate the potential of my performers. Kate Bold for her invaluable guidance, Royden Paynter for his valued input. To Roux Engelbrecht for allowing us to use his wedding suit. Willie Coombes, Rita Westbrook, my best friends for their invaluable support, Zukiswa Zimela, Fathima Simjee, Meliss Pentz for the incredible drive and initiative she devoted, Roshnee Gupta for always willing to listen and to my cast for their patience, effort and hard work.

# Revolutionary Road

Written by | Justin Haythe

Directed by | **Natasha Lech**

*"Hopeless emptiness... Plenty of people are onto the emptiness, but it takes real guts to see the hopelessness." (Revolutionary Road Screenplay).*

## Cast

April Wheeler | **Nicola Elliot**

Frank Wheeler | **Tristan Jacobs**

Mrs Givings | **Zanne Solomon**

John Givings | **Neil Luyt**

## Crew

Stage Manager | **Sifiso Sikhakhane**

Assistant Stage Manager | **Samukelisiwe Mngadi**

Costume Designer | **Samukelisiwe Mngadi**

Props Manager | **Sifiso Sikhakhane**

Sound Operator | **Samukelisiwe Mngadi**

Lighting Operator | **Sifiso Sikhakhane**

Backstage Assistance | **Lolo Malumo**



## Special Thanks

I'd like to give a special thank you to Robert Haxton for helping me to discover and adapt the screenplay. To Roydon Paynter, Roux Engelbrecht, Willie Coombs, Kate Bold and Janet Buckland for investing in my vision and being there to advise and support my every step. And to my wonderful cast and crew for having faith in a piece that has never been done on a theatre stage. Thank you all very very much!

## Theatre Management Committee

Chair	<b>Mr Tim Huisamen</b>
HOD Drama	<b>Professor Gary Gordon</b>
HOD English	<b>Professor Paul Walters</b>
HOD Music	<b>Professor Marc Duby</b>
School of Languages	<b>Professor Russell Kaschula</b>
Theatre Director	<b>Ms Alex Sutherland</b>
Theatre Administrator	<b>Ms Kate Bold</b>
Senate	<b>Professor George Euvrard</b>
Senate	<b>Dr Anton Krueger</b>
Senate	<b>Dr Tim Radloff</b>
Finance	<b>Mr Mike Olivier</b>
Estates	<b>Mr Cromwell Dyala</b>

## Drama Department and Theatre Complex

Chief Technical Officer	<b>Oliver Cartwright</b>
Head of Wardrobe	<b>Rita Westbrook</b>
Design & Technical Supervisor	<b>Roux Engelbrecht</b>
Secretary	<b>Vusiwe Mnyobe</b>
Messenger & Clerk	<b>Vuyelwa Nonie Hoza</b>
Stage Hand	<b>Welcome Mqgwanci</b>

Produced by the Rhodes University Drama Department  
Corner Somerset & Prince Alfred Streets | Grahamstown | South Africa  
PO Box 94 | Grahamstown | 6140 | Tel: 046 603 8538

## Drama Department | Events 2009

September **Bent**

Written by Martin Sherman

Directed by Robert Haxton

October **Theatre in Motion '09**

Physical Imagination Takes Flight

Postgraduate choreography, physical  
theatre and dance

