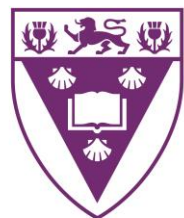




# Methodology for Less Harmful, More Helpful Evaluation in Natural Resource Management Programmes in South Africa

Eureta Rosenberg

Chair in Environment and Sustainability Education



**RHODES UNIVERSITY**  
*Where leaders learn*

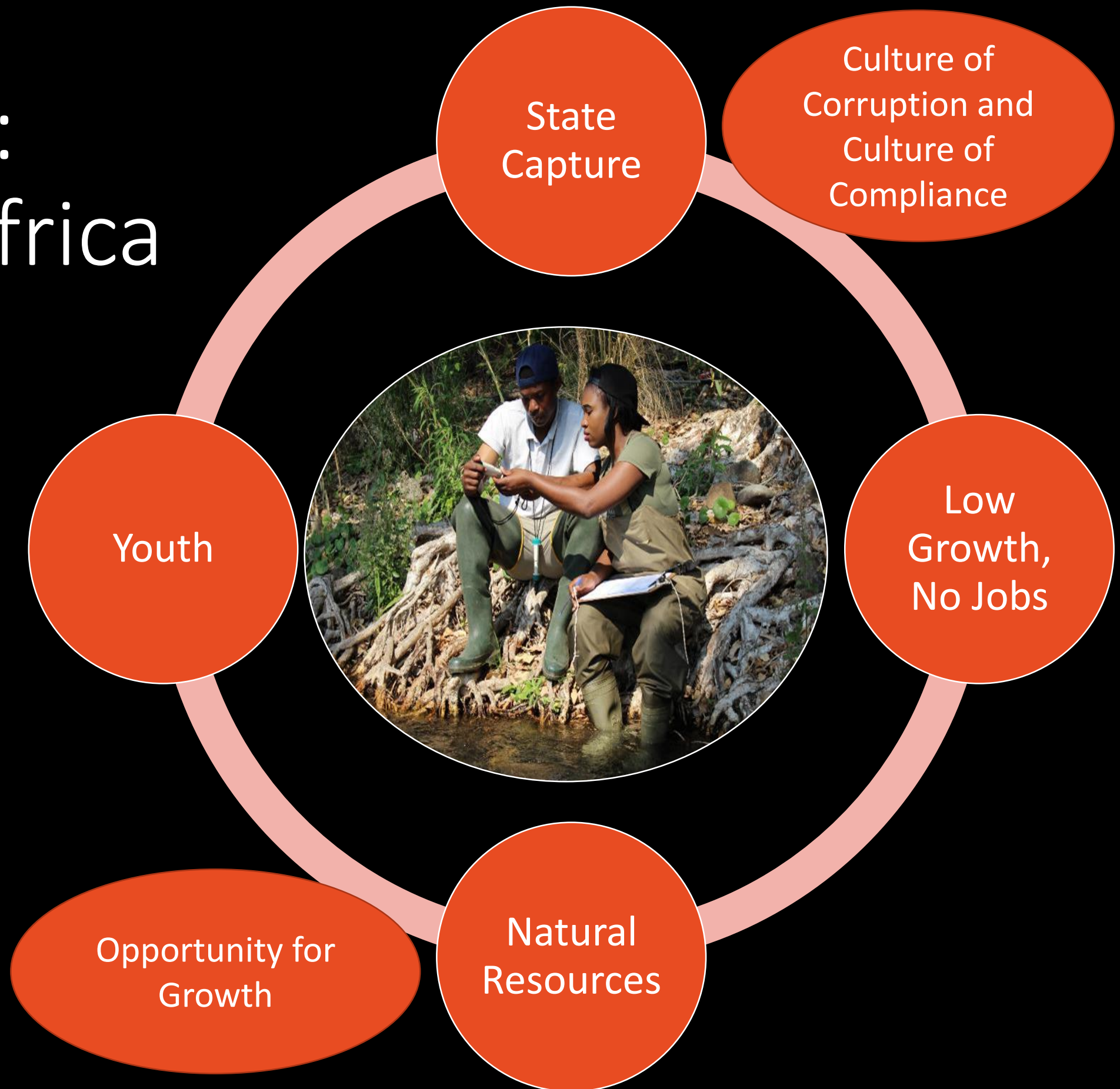


# Key Questions and Focus

- How can we better evaluate national programmes?
  - Is a realist approach appropriate here?
  - Can it also be developmental/ formative/ participatory?
- 
- Working developmentally with ToC for SAM
  - Multi-method methodology & synthesis
  - Governance and the role of the evaluator



# Context: South Africa





# 462,000 Natural Resource Management Jobs



Restoring Wetlands



Fighting Wild Fires



Invasive Aliens



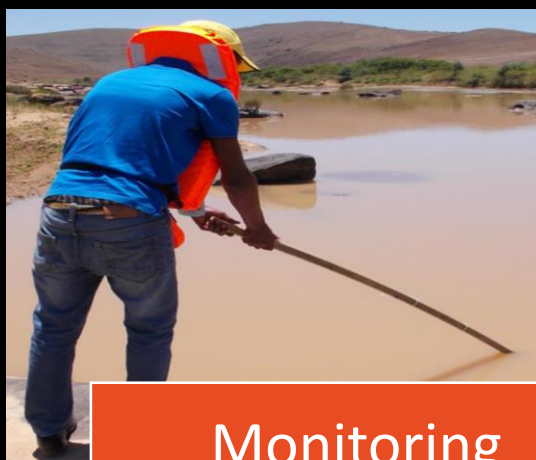
Altitude Clearing



Controlling Erosion



Replanting



Monitoring



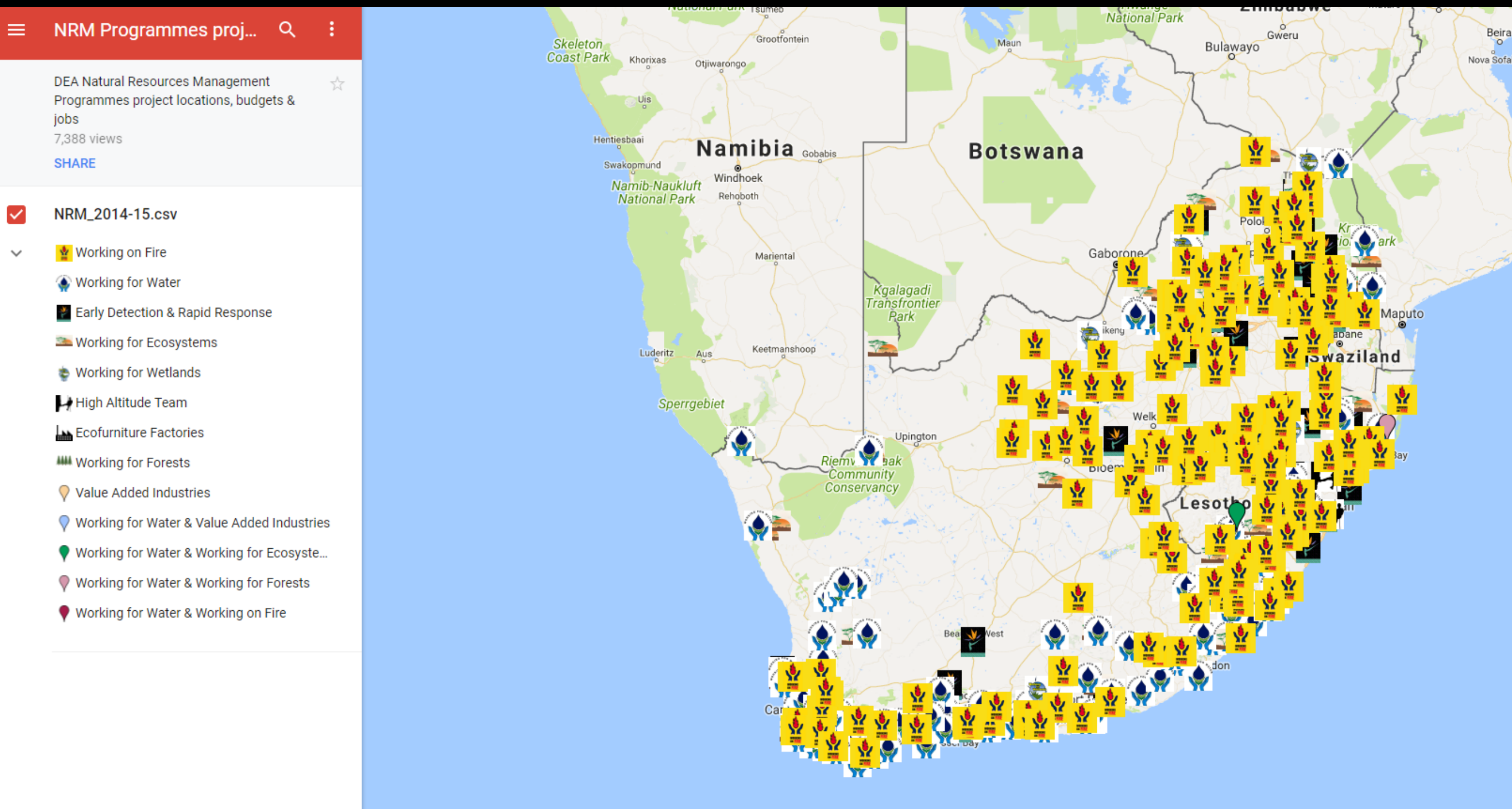
Training



Managing



[https://www.environment.gov.za/projectsprogrammes/nrm\\_maps](https://www.environment.gov.za/projectsprogrammes/nrm_maps)

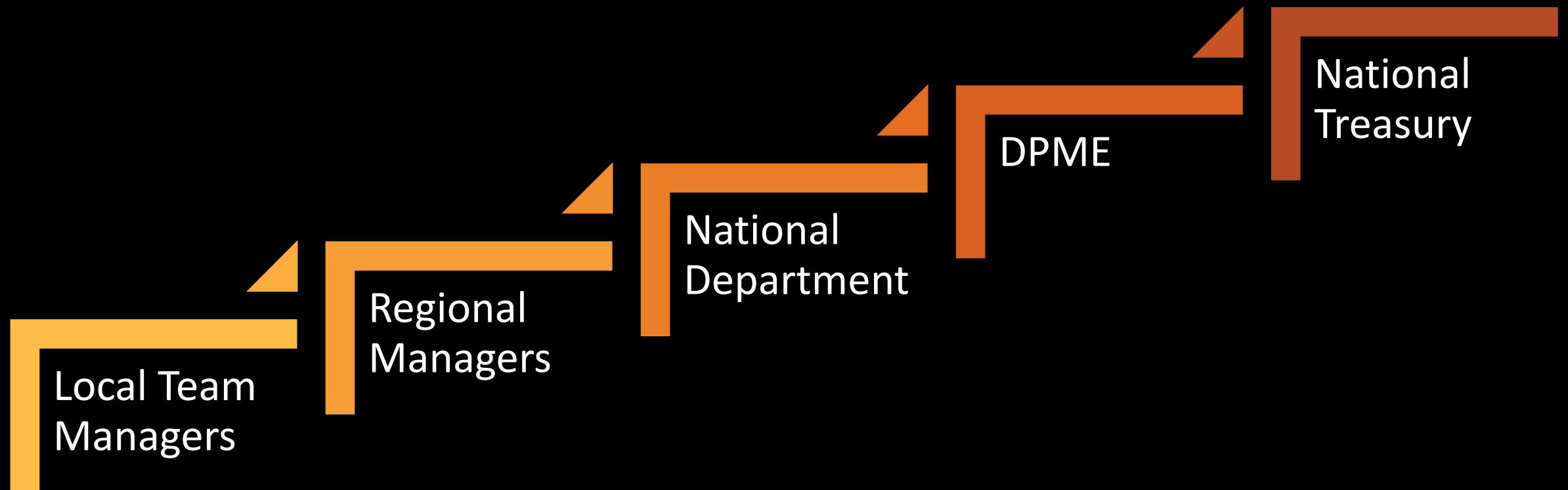


# The Theory of Change?

What is Missing?



# How are the NRMPPs Evaluated?



**1** NO  
POVERTY



**2** ZERO  
HUNGER



**3** GOOD HEALTH  
AND WELL-BEING



**4** QUALITY  
EDUCATION



**5** GENDER  
EQUALITY



**6** CLEAN WATER  
AND SANITATION



**7** AFFORDABLE AND  
CLEAN ENERGY



**8** DECENT WORK AND  
ECONOMIC GROWTH



**9** INDUSTRY, INNOVATION  
AND INFRASTRUCTURE



**10** REDUCED  
INEQUALITIES



**11** SUSTAINABLE CITIES  
AND COMMUNITIES



**12** RESPONSIBLE  
CONSUMPTION  
AND PRODUCTION



**13** CLIMATE  
ACTION



**14** LIFE BELOW  
WATER



**15** LIFE  
ON LAND



**16** PEACE AND JUSTICE  
STRONG INSTITUTIONS



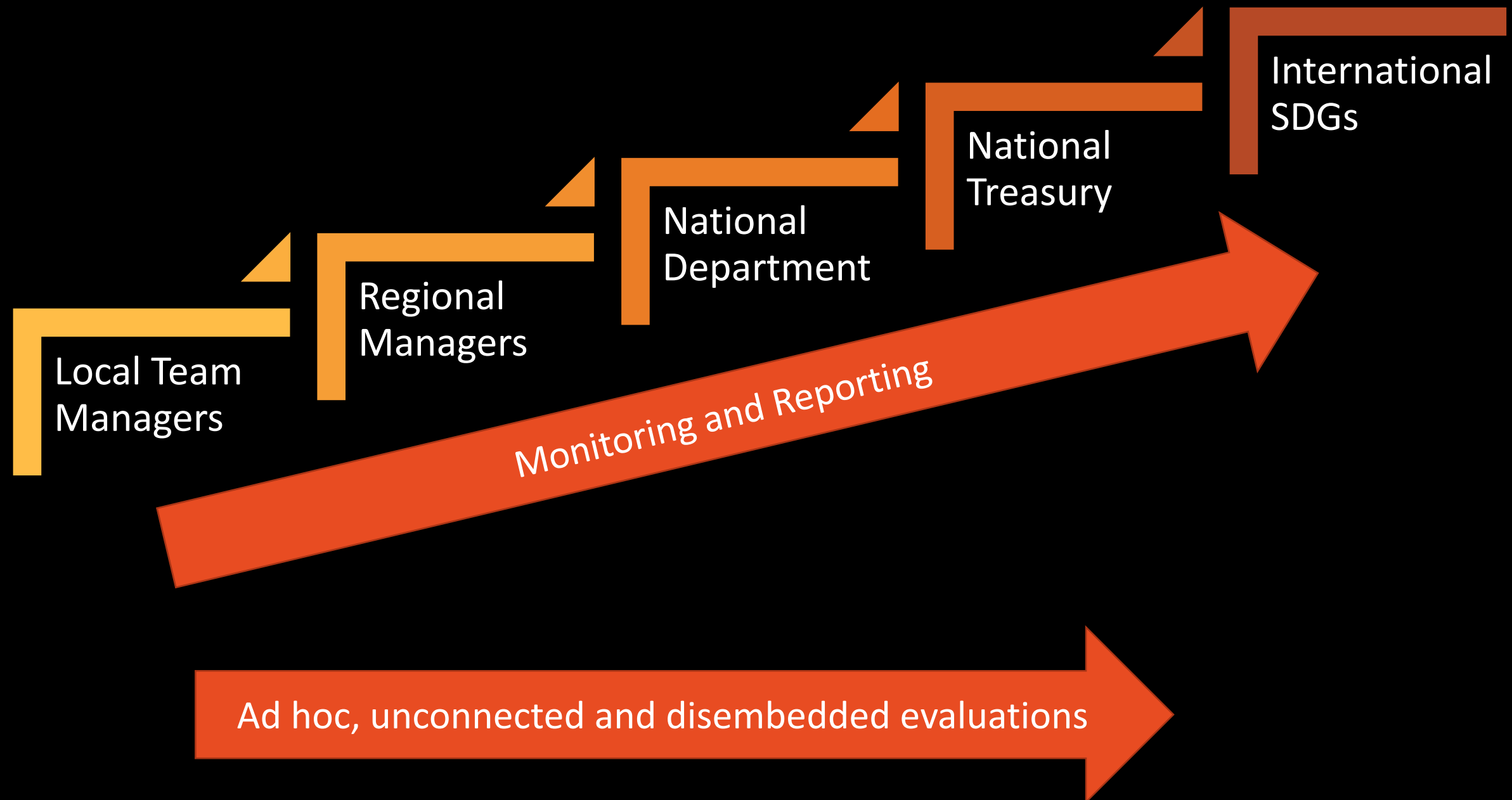
**17** PARTNERSHIPS  
FOR THE GOALS



**THE GLOBAL GOALS**  
For Sustainable Development



# How are the NRMPs Evaluated?



# What is ~~Evaluated~~ Reported?

- # of people employed
- # of training days
- # of hectares cleared
- # of wetlands restored
- Etc.





# What is Harmful?

- Indicators only + targets
- Compliance culture
- Fear to fail
- Theory-practice disjunct ...



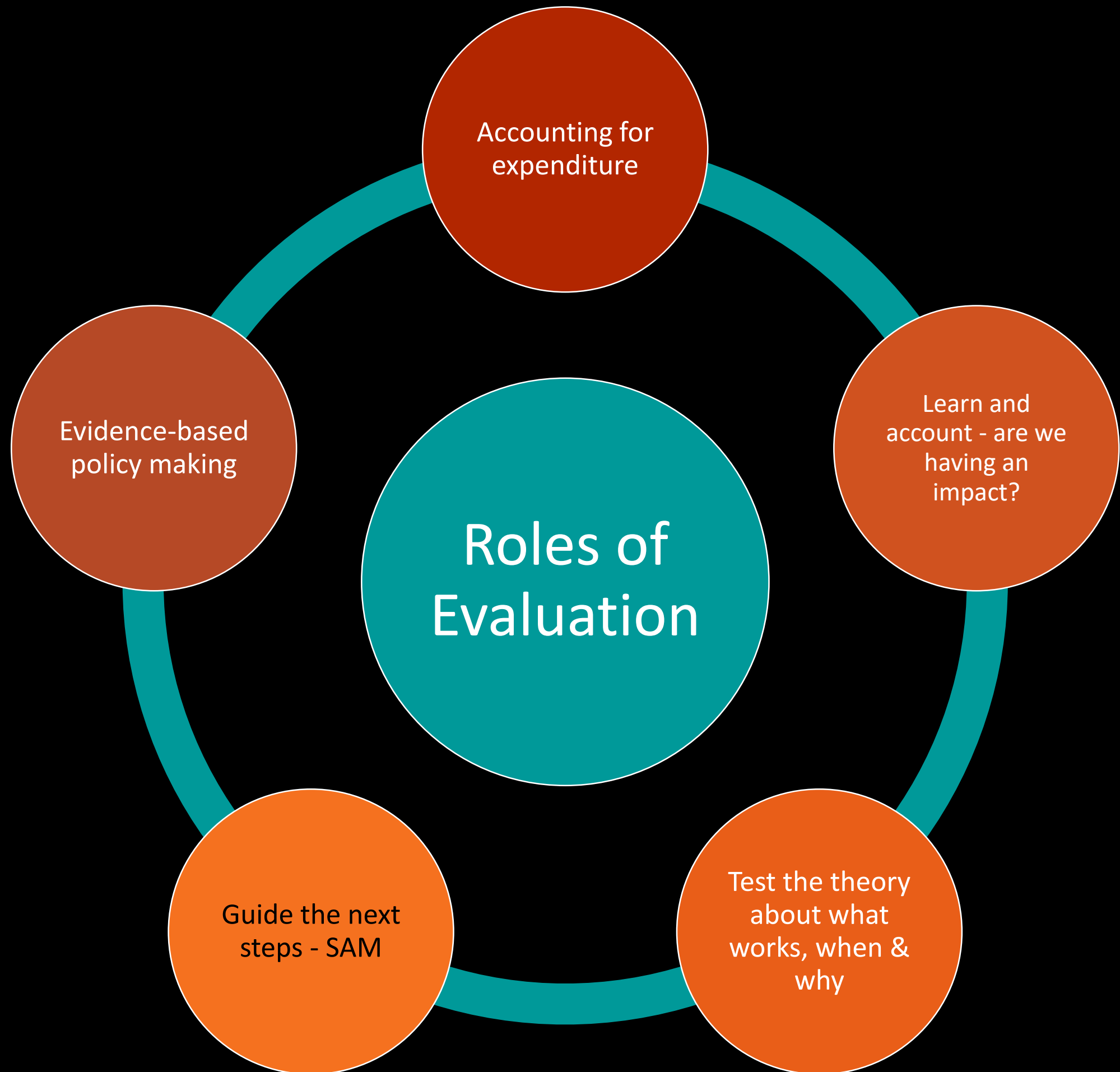
- While wetlands collapse again, alien plants invade again ...
- And short term cash injections fail to improve community well-being  
(From *ad hoc* evaluations)
- Evaluation not applied

# Helpful How?

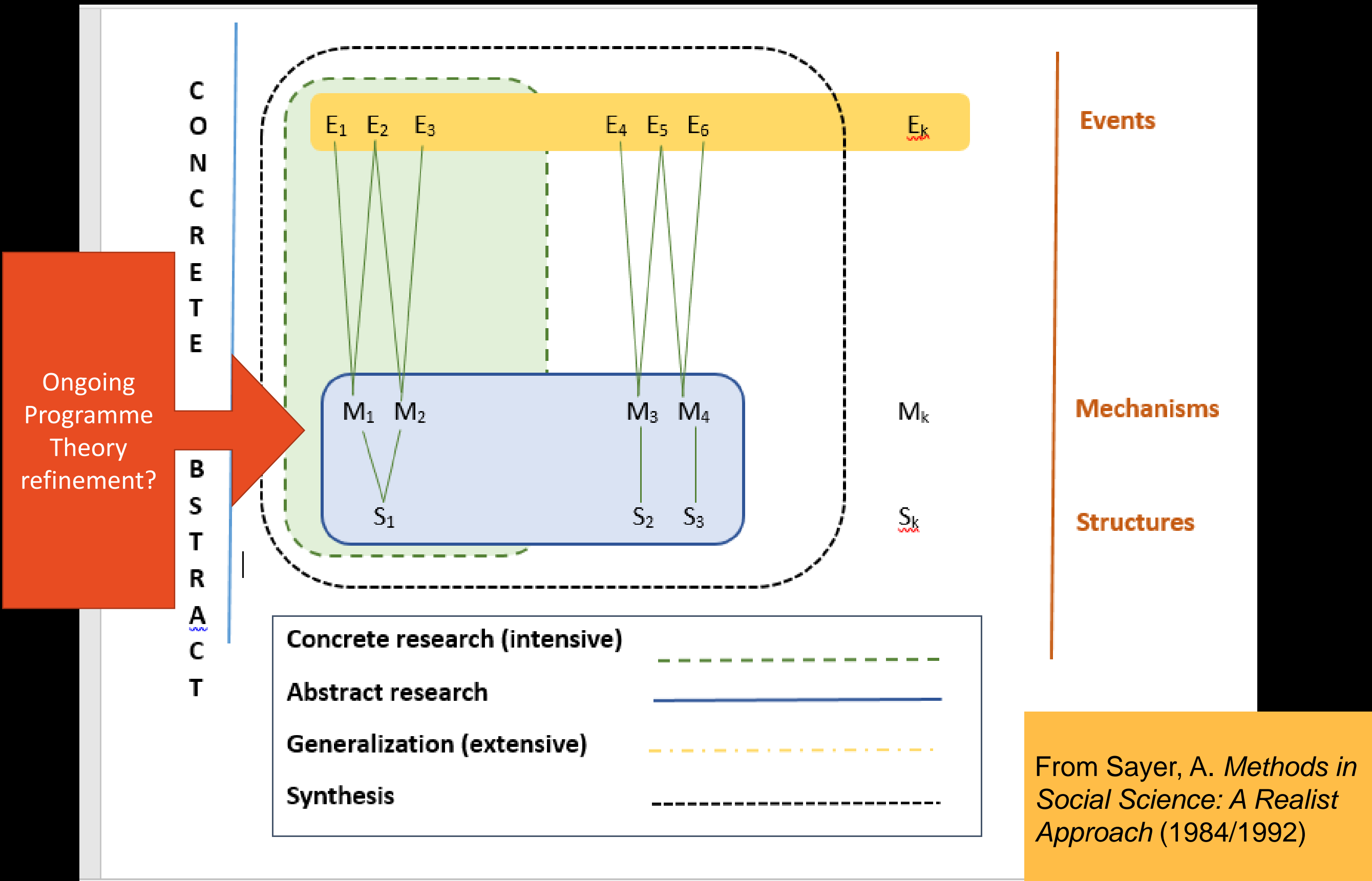
- Learning
- Strategic Adaptive Management
- In complex systems
- At multiple levels







# A Realist Multi-Method Approach





# What mix of methods could work?

1. Monitoring against national indicators for aggregation
2. Case studies across contexts, systematically planned
3. Programme theory developmentally surfaced and refined (PAR variant)

# Examples

## Monitoring data:

- # of training days
- # of new jobs
- # of hectares cleared
- # of wetlands rehabilitated

---

## Case study questions:

Where is the citizen monitoring working, for whom, and why? Where is it not working, and why?

Where are the positive training outcomes, for whom, and why? Where are there no positive training outcomes, why?

Where is access to natural resources increasing, for whom? Why?

---

## Meta-evaluation questions:

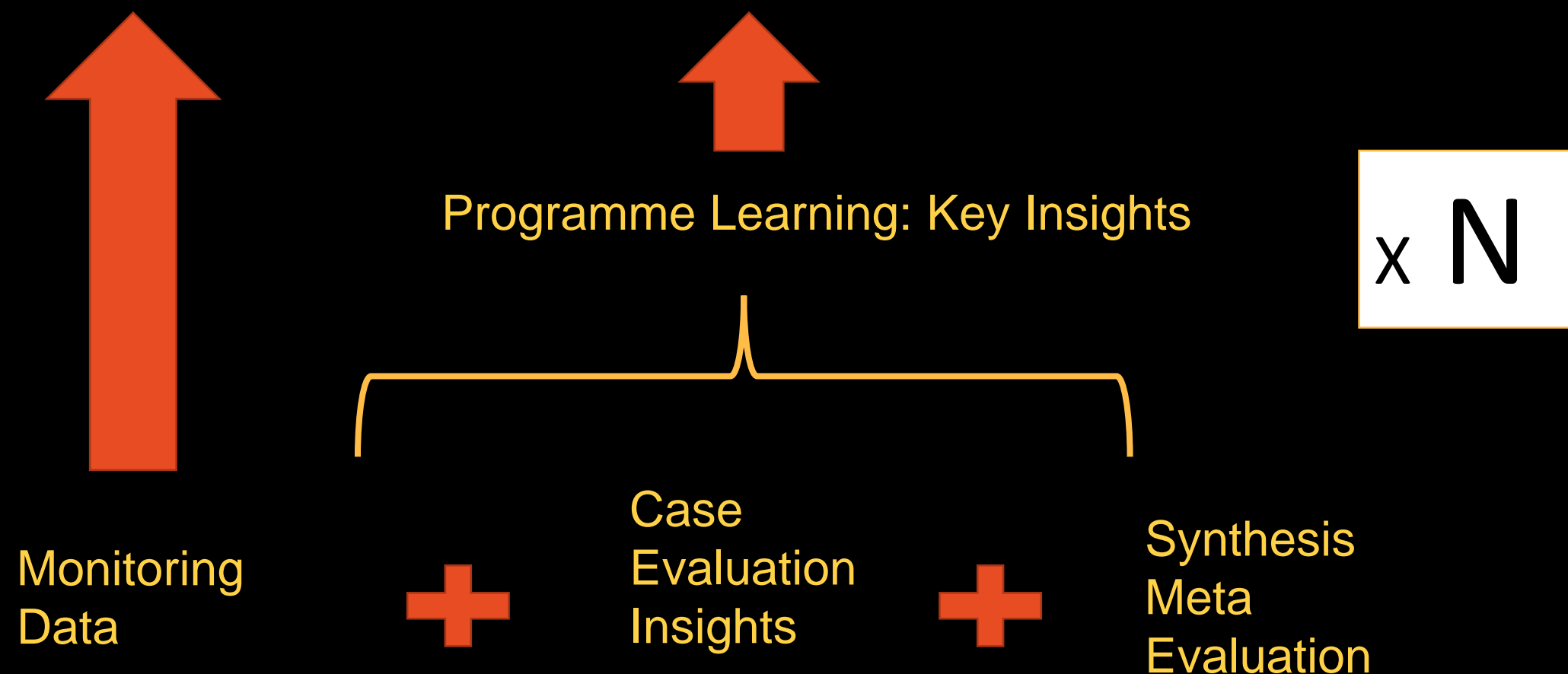
What are we learning about working with citizen monitors?

What are we learning about the mechanisms for moving out of poverty through natural resource management programmes?

---

# Across all SA NRM programmes, to 'aggregate' ...

Report from all NRM programmes into DEA, DPME, Treasury both quantitative and qualitative, monitoring and evaluation insights, accountability & learning

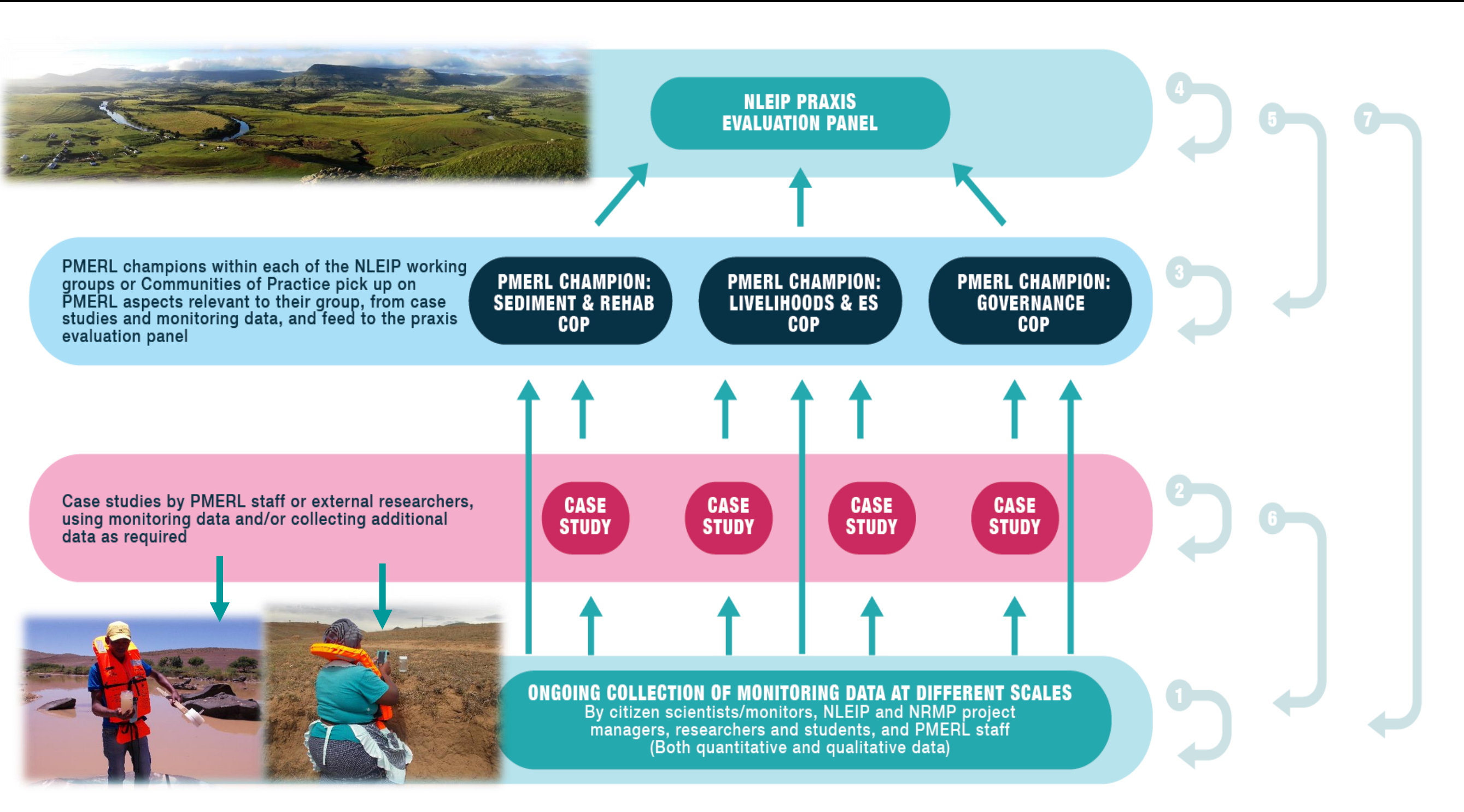


# Method and Governance

- Monitoring against national indicators for aggregation
- Case studies across contexts, systematically planned
- Programme theory developmentally surfaced & refined (PAR)
- Synthesis across methods and levels
- Multi-level governance of the PMERL system for reflexivity or SAM
- Requisite simplicity and complexity



# Combine indicator-based monitoring & case based evaluation, with synthesis (meta-evaluation) and integrative (P)MERL governance:



# What about Absences?

What is Missing?



# Key Questions and Focus

- How can we better evaluate national programmes?
  - Is a realist approach appropriate here?
  - Can it also be developmental/ formative/ participatory?
- 
- Working developmentally with ToC for SAM
  - Multi-method methodology & synthesis
  - Governance and the role of the evaluator

Looking forward to your input! Thank you!



E.Rosenberg@ru.ac.za