



Welcome to the Professional  
Training Programme in  
Clinical Psychology  
at Rhodes University

## Contents

People	4
Staff Portfolios	4
Lecturers in the Psychology Department involved in teaching on the course	4
Clinical Associates of the Psychology Department involved in teaching on the course	4
Contract Lecturers and Supervisors	4
Clinical Students 2023	5
Clinical Interns 2023	5
Counselling Students 2023	5
Mandisa Hadebe	5
Judd Viljoen	5
Gladdys Manamela	5
Nokithula Chonco	5
Mono Onalenna Majoe	5
Zama Dube	5
Counselling Interns 2023	5
The Definition of Clinical Psychology at Rhodes University	5
Objectives and Outcomes	7
Coursework	7
Research	7
Internship	8
Coursework	8
The Formal Teaching Programme	8
<b>Adult Psychopathology, Assessment &amp; Psychotherapy</b>	9
<b>Child Psychopathology, Assessment &amp; Psychotherapy</b>	11
<b>Clinical Psychology Professional Practice</b>	12
Prescribed Texts	13
Case work	14
<i>Assignment of cases</i>	14
Case files	16
Case supervision	16
Case conferences and ward round attendance at Fort England Hospital	17
Case work time	18
Registration with HPCSA	19
The Test Library	19

<b>Coursework Mark Structure</b>	<b>20</b>
Research	21
Internship	23
Professional and Ethical Standards	24
Stay in contact	24
Dress code	25
Cordial and respectful relationships	25
Confidentiality and ethics	25
Clinic procedures	26
Clinic offices	26
Personal therapy	26
Ongoing evaluation and feedback	27
DP certificate	28
Plagiarism	29
The Time-Table	29
List of Policies and Guidelines relevant to the Clinical Psychology Masters Course	29
HPCSA documents relevant to training clinical psychologists	30

## People

### Staff Portfolios

Clinical Programme Coordinator:	Dr Duane D. Booysen
Counselling Programme Coordinator	Prof Megan Campbell
Clinic Coordinator:	Nqobile Msomi
Clinic Administrator:	Ms Busi Mzangwa

### Lecturers in the Psychology Department involved in teaching on the course

AF	Alan Fourie, Senior Lecturer, Clinical Psychologist and Jungian Analyst
DB	Dr Duane Booysen, Senior Lecturer and Clinical Psychologist
JK	Jan Knoetze, Senior Lecturer and Educational Psychologist (On sabbatical from January - June 2023)
MC	Prof Megan Campbell, Associate Professor, Counselling Psychologist and Co-ordinator of the Counselling Programme
NM	Nqobile Msomi, Lecturer and Counselling Psychologist
SZ	Sizwe Zondo, Lecturer and Neuropsychologist
TFK	Prof Tracey Feltham King, Associate Professor.

### Clinical Associates of the Psychology Department involved in teaching on the course

PS	Pumza Sakasa, Clinical Associate, Rhodes University and Acting Principal Clinical Psychologist, Fort England Hospital
LM	Dr Luzuko Magula, Child and Adolescent Psychiatrist, Department of Psychiatry and Behavioural Sciences, Faculty of Health Sciences, Walter Sisulu University.

### Contract Lecturers and Supervisors

LC	Lauren Creese, Clinical Psychologist, Fort England Hospital
MM	Prof Mamza Mothibe, Faculty of Pharmacy, Rhodes University
PE	Poppy Eagles, Clinical Psychologist, Fort England Hospital
RN	Raydene Naidoo, Counselling Psychologist, Private Practice.
PH	Phillipa Haine, Counselling Psychologist, Private practice.
TW	Tracey Whitehead, Counselling Psychologist, Private practice.

### Clinical Students 2023

Tebogo Mohlapamaswe  
Tembeka Mhlakwaphalwa  
Sherwin Abrahams  
Chante Odendaal  
Ziphozethu Salman  
Jessica Louw

### Clinical Interns 2023

Lethabo Themba  
Mandisa Qodashe  
Miche Adolph  
Nonthutuzelo Mpondo  
Siphelele Zwane  
Zandisiwe Piliso

### Counselling Students 2023

Mandisa Hadebe  
Judd Viljoen  
Gladdys Manamela  
Nokithula Chonco  
Mono Onalenna Majoe  
Zama Dube

### Counselling Interns 2023

Rendani Mabaso  
Buncwanekazi Mankantshu  
Palesa Monkhe  
Constanze Steyn  
Oreratile Tshepang  
Babalwa Zokoza



### The Definition of Clinical Psychology at Rhodes University

The shape and form of Clinical Psychology at Rhodes University is informed by the Minimum standards for the training of Clinical Psychology, as published by the Board of

Psychology, HPCSA in February 2019. It is also influenced by the Scope of Practice of the Profession of Psychology and the Scope of Practice of Clinical Psychologists promulgated in 2011 by the Professional Board of Psychology of the HPCSA, as well as South African literature on clinical psychology training (e.g. Ahmed & Pillay, 2004; Kagee, 2006; Pillay & Kritzinger, 2007; Pillay, Ahmed & Bawa, 2013) and recent reviews of mental health services in South Africa (e.g. Lund, Peterson, Kleintjes & Bhana, 2012).

In particular, our vision is that the domains of practice of clinical psychology include: assessing, diagnosing and intervening with individuals and groups with psychological and mental health disorders. Clinical psychologists work in a range of settings from primary health care contexts through to general hospital and tertiary hospital contexts. Therefore, they need to be able to deliver services that are at times preventative and at other times remedial in nature; assessing and treating mental health disorders that range from mild to complex and severe with short- and long-term interventions respectively. Clinical Psychologists understand mental illness from a biopsychosocial perspective and are concerned with delivering high intensity interventions with a clear evidence base. They are also concerned with the promotion of community mental health through less traditional roles such as providing support and training to primary mental health workers, and getting involved in advocacy initiatives, public information campaigns and policy work. Finally, clinical psychologists are well versed in research practises that are locally relevant and directly influence clinical psychology practice.

The teaching of the clinical programme draws on a problem-based learning model, in other words, learning will largely take place around particular psychological disorders. In addition, the programme emphasises that professional identities are not isolated: rather your identity as a clinical psychologist will develop within the particular contexts in which you work, contexts that are often unique to South Africa and Africa. Thus, the programme emphasises contextualising problem-based learning within a South African context drawing on local case examples in order to ensure that Clinical Psychologists remain responsive to the population of South Africa.

## Objectives and Outcomes

The Masters Degree in Clinical Psychology is a two-year degree course. The first 'coursework' year consists of a formal teaching programme alongside practical case work, and the second year consists of an internship at an HPCSA registered internship site. You will work on the research component of your degree continuously over the two years.

The aim of the Rhodes University Clinical Psychology programme is to train, former psychology honours student, to be a competent, ethical, socially responsive, and scientifically guided Clinical Psychologist. This broad aim is achieved through the following three main components that make up the degree and build your applied knowledge and practical competence:

### Coursework

The coursework consists of a combination of a formal teaching programme and practical work. The seminars introduce the main concepts needed for applied work, while the supervised casework provides the opportunity to put the theory into practice and develop applied skills. Your understanding of the coursework is assessed continuously through written and oral assessments, and through the ongoing evaluation of your casework (clinical and public mental health) by your supervisors. All coursework requirements must be successfully passed before proceeding into the internship year.

### Research

As part of the degree, you are required to complete a research dissertation on a topic relevant to Clinical Psychology. To support this work, you will attend a series of seminars on research facilitated by the [Centre for Postgraduate Studies](#) and you will be allocated a research supervisor.



## Internship

The internship year typically forms the second year of the training and also forms part of the degree. As an intern you will receive additional on-site training and ongoing supervision. However, you will be expected to work fairly independently much of the time and will function as a paid professional with considerable responsibility. At the end of the internship, if your work meets the required standard and your research dissertation has been examined and passed, you will be able to take the HPCSA, Board of Psychology Examination. On passing this exam, you will proceed to your community service year at the end of which you will be eligible to register with the HPCSA, Board of Psychology as a Clinical Psychologist in Independent Practice.

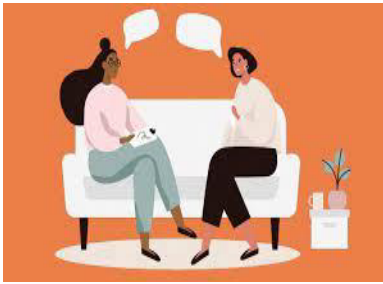
## Coursework

### The Formal Teaching Programme

The formal teaching programme takes place throughout the year and consists of two-hour seminars with face-to-face facilitation by a lecturer. The morning session is broken up into two 2-hour sessions with a half hour tea break in between (Session 1: 8h30 to 10h30; Session 2: 11h00 to 13h00). The afternoon session begins at 14h00 and finishes at 16h00 allowing for a fifteen-minute comfort break. The timetable is available on Google Calendar and the URL will be shared with you. Please ensure that you check the Google Calendar regularly as some dates and or venues might change throughout the year. Seminar readings, slides and all other documents related to your course will be made available on RUConnected.

The formal teaching programme offered at Rhodes has been carefully designed to increase your knowledge and applied skills in three key areas: i) Adult Psychopathology, Assessment & Therapeutics, ii) Child Psychopathology, Assessment & Therapeutics, and iii) Clinical Psychology Professional Practice. Module outlines are provided for each of these areas with specific outcomes, assessment criteria and tasks described for each.

## Adult Psychopathology, Assessment & Psychotherapy



This module focuses on how to effectively interview a patient, conduct a mental status exam and use a formal diagnostic system. Students' psychological assessment skills are developed so that they are able to provide an appropriate diagnosis and formulate the patient's distress in psychological terms. Part of these assessment skills consists of the ability to select, administer, score and interpret a core battery of psychometric tests that are aimed at assessing cognitive, personality and emotional functioning in adults while remaining sensitive to the contexts in which these adults present. Students are also trained to administer more advanced, function specific/neuropsychological psychometric tests. Finally, teaching time is also devoted to learning how to meaningfully communicate the findings, in writing and orally, to different audiences. See Table 1.

Table 1:

<i>Subject area</i>	<i>Specific Topic</i>	<i>No. of Seminars</i>	<i>Lecturer</i>
Psychopathology: History taking, MSE, and Clinical Signs and Symptoms	Clinical Signs & Symptoms	14	LC
	Neurocognitive conditions including HIV/AIDS & mental health	6	SZ
Psychometric Assessment	Measurement & Psychometric Theory	3	MC
	Cognitive assessment (WAIS)	4	AVM
	Intellectual Screening (Adult)	1	RN
	Neuropsychological assessment	4	SZ
	Personality assessment (MMPI)	3	RN
	Emotional assessment	2	RN

Communicating findings	Case formulation	1	DB
	Report Writing	1	DB

The learning in this module is assessed through a class test (Psychopathology and Neurocognitive Conditions) in May, an oral assessment in June, supervision throughout the year, a written and oral examination at the end of the year.

In addition, this module focuses on adult therapeutics (See Table 2). The module builds on the initial teaching of counselling micro-skills so that students develop the ability to construct theoretical formulations that explain the aetiology of psychological disorders, and use these to form the basis for a variety of



psychotherapeutic interventions and specific therapeutic techniques. Students are exposed to a range of modalities that are supported by a strong evidence base.

<i>Subject area</i>	<i>Specific Topic</i>	<i>No. of Seminars</i>	<i>Lecturer</i>
Therapeutics	The Skilled Helper Workshop	6	PS
	Cognitive Behavioural Therapy (CBT)	14	DB
	Psychoanalytic Psychotherapy (Short term)	14	LSY
	Group Therapy: Dialectical Behaviour Therapy	6	LC

This module is assessed through an oral assessment in June, a written and oral exam in November and in supervision throughout the year.

## Child Psychopathology, Assessment & Psychotherapy

In this module students learn about how to assess children's and adolescents' current



functioning in various domains and in different settings. Students are also taught about the clinical signs and symptoms of psychological disorders in childhood and adolescence. See Table 3:

<i>Subject area</i>	<i>Specific Topic</i>	<i>No. of Seminars</i>	<i>Lecturer</i>
History Taking	Child/Adolescent interview	1	AVM
	Parent/Caregiver interview	1	AVM
Psychometric Assessment	Cognitive Assessment: WISC	4	AVM
	Emotional & Behavioural Assessment	5	RN
	Intellectual Screening (Child)	2	MC
Psychopathology	Clinical signs & symptoms (Child)	5	LM
Communicating findings	Report Writing	1	TW
Communicating findings	Conceptualization	1	TW

The module is assessed through a written exam in November, and in supervision throughout the year. In Part 2 of this module students learn about the theoretical foundations of, and therapeutic skills for, intervening with children, adolescents and their families. Seminars included here are:

<i>Subject area</i>	<i>Specific Topic</i>	<i>No. of Seminars</i>	<i>Lecturer</i>
Psychotherapy	Play Therapy	5	PH
	Mentalization based Therapy	5	PH

	Cognitive Therapy	5	PH
--	-------------------	---	----

The second part of this module is assessed through a written exam in November and in supervision throughout the year.

### Clinical Psychology Professional Practice

This module engages with issues central to the professional practice of clinical psychologists in South Africa including the legal framework and principles that govern ethical practice. In addition, emphasis is placed on providing students with a variety of skills required for the effective management of cases in health settings



and the specific skills required to effectively apply clinical psychology in health contexts. The public mental health approach is taught with students required, as part of the course and under supervision, to design, implement and evaluate a psychologically based programme in the local community, aimed at intervening on a much broader scale than the individual. This module is aimed at increasing the

sensitivity of trainees to the diversity of socioeconomic status, culture, race, gender, sexual orientation, disability and language that typifies the South African population. Finally, students are introduced to psychological assessment in a forensic setting where criminal capacity assessment and risk assessment is emphasised. See Table 4.

Table 4.

<i>Subject area</i>	<i>Specific Topic</i>	<i>No. of Seminars</i>	<i>Lecturer</i>
Ethics & Legislation	Ethics and Legislation for Clinical Psychologists	5	AF
Case Management	Professional identity	1	DB
	Working in a Multi-Disciplinary Team	1	PS
	Psychological Emergencies	1	PS
	Liaison & Referral	1	PS
	Protocols & Contracts	1	PS

	Management of Patient Information	1	PS
Working with Diversity	Sexual and Gender identities	1	PE
	Race & Racism/Clinical subjects in postcolonial contexts	1	PE
	Disability and Mental Health	1	PE
	Inequality (Class) and Mental health	1	PE
	Clinical Psychology & Cultural diversity	1	PS
	Working in multilingual settings	1	PS
Clinical Psychology in Health Contexts	Evidence based practice	2	DB
	Psychopharmacology	2	MM
Public Mental Health	Designing, implementing and evaluating Public Mental Health interventions	10	DB & AF
	Conducting workshops	1	TW
Forensic Assessment	Adult	5	PS
	Child	3	PS

The teaching on Ethics & Legislation is assessed through a written assignment and in supervision. The engagement with Public Mental Health seminars is also assessed through a written assignment which is based on students' design, implementation and evaluation of a public mental health intervention in Makhanda. The seminars on Case Management, Working with Diversity and Forensic Assessment are assessed through a written examination at the end of the year.

### Prescribed Texts

- American Psychiatric Association. (2013). *Diagnostic and statistical manual of mental disorders* (5th ed.). Arlington, VA: Author.
- Brownson, R. C. (2012). *Dissemination and implementation research in health: Translating science to practice*. Oxford: Oxford University Press. (freely available)
- Goldfinger, K., & Pomerantz, A. M. (2014). *Psychological assessment and report writing* (2nd ed.). Thousand Oaks, California: Sage.
- Laher, S. & Cockcroft, K. (2013). *Psychological Assessment in South Africa: Research and Applications*. Johannesburg: Wits University Press. (Freely available)

- Lemma, A., Target, M., & Fonagy, P. (2011). *Brief Dynamic Interpersonal Therapy: A clinician's guide*. Oxford: Oxford University Press.
- Midgley, N. Ensink, K., Lindqvist, K., Malberg, N. & Muller, N. (2017). *Mentalization-based treatment for children*. Washington: APA.
- Peterson, I., Bhana, A., Flisher, A.J., Swartz, L. & Richter, L. (2010)(Eds.) *Promoting mental health in scarce resource contexts: Emerging evidence and practice*. Cape Town, SA: HSRC Press (Freely available).
- Beck, J. S. (2021). *Cognitive behavior therapy: Basics and beyond* (3rd ed.). Guilford Press.
- Hayes, S. C., & Hofmann, S. G. (Eds.). (2018). *Process-based CBT: The science and core clinical competencies of cognitive behavioral therapy*. New Harbinger Publications, Inc..

It is not necessarily a requirement that you own a copy of these books as most copies are available in the RU library, however, your own copy is obviously much more convenient.

All seminars will have prescribed readings set by the lecturer which will be sent to you by the respective lecturers before each seminar. It is extremely important that you read the prescribed readings BEFORE the seminar. As the first term is very full, you need to set aside additional time over the weekend and in the evenings to keep up to date with the reading material.

## Case work

### *Assignment of cases*

By the beginning of week 4 (mid-March) you will be preparing to complete your first cognitive screening assessment. You will also attend your first casework supervision meeting with your casework supervisor. By the end of the first term, you will have been allocated your first psychotherapy cases through the Psychology Clinic and when you return from April Vac you will begin your rotations through the Assumption Development Centre (ADC) Counselling Hub. You will gradually build up your caseload by the end of the second term. Your supervisors and the programme

co-ordinator will try to ensure that all students obtain a broad range of experience in both adult and child practice in both assessment and psychotherapy.

Cases are assigned to you by your supervisor and case management issues are discussed at the weekly clinic meeting by the Programme co-ordinator. Co-ordinators will try to ensure that all students obtain a broad range of experience in both adult and child assessment and psychotherapy. Clients *MUST* be *contacted* within *1 week of allocation* and before the next clinic meeting. The telephone in the tea room (046 603 7417) may be used to contact clients. In addition, we recommend that you set up a separate Gmail account or WhatsApp/Telegram number for all client correspondence. The first appointment should be arranged as soon as possible and certainly *within 2 weeks from allocation*.

Your work with each client will begin with an assessment process that can take one to five sessions, depending on whether or not psychometric testing is used as part of the assessment process. **You must write an intake assessment report for each client that you see as soon as the assessment process is complete.** These reports should cover the client's presenting problems, history, personal development, diagnosis, case formulation and treatment plan. The assessment report must be finalised, endorsed and signed by the supervisor allocated to the case within one month and generally as soon as possible from first contact.

In all cases, the assessment, management decisions and treatment of clients must be closely supervised. Supervisors take clinical responsibility for the cases, so it is essential that you discuss the case material and your interventions fully and honestly with them and do not initiate interventions that have not been discussed with them first.

There are required and recommended psychometric tests that you will administer, score and interpret during the course of the year. You will be provided with a form to keep a record of these. Each student should expect to complete at least two full psychological assessments during the year (i.e., WAIS and WISC). The intake interview will usually be followed by a battery of psychological tests that are planned and selected in consultation with your supervisor. **Assessment Processes**



**should be concluded within 4 weeks of first meeting with the client.** Students are encouraged to familiarize themselves with the tests in the test library and practice the administration of them in their own time.

### **Case files**

You will be responsible for keeping a clinic case file for each client in hard copy. All case files should include a signed consent form, assessment report, case notes, psychometric test protocols, client correspondence, other relevant reports and a termination report. All reports must be closely supervised by the case supervisor and only filed once she/he has approved it. Session records must be written immediately after all contact with your clients and case files must always be kept up to date. It is important to acquire the skill of completing process notes promptly as this will be required during your internship. You must also record all other contacts that might occur by telephone or e-mail. Your files should be available for regular inspection by your supervisor. Case files should always be stored securely in your office at the Clinic. By **13 October 2023**, all files must be submitted to the clinic administrator for signing off by your supervisor. You will also be required to complete and submit statistics detailing your client work.

### **Case supervision**

The supervision you receive throughout the year is one of the most important ways in which you acquire your clinical skills (assessments and diagnostics), psychotherapeutic, and your overall professional development as a trainee clinical psychologist. You will learn a great deal from the registered clinical psychologist who supervises your case work. In addition to your general clinical skills, supervision will also be a space to process and reflect on social and contextual matters related to language, culture, poverty, race, among others, and how these factors relate to your professional identity as a clinical psychologist.

You will be allocated a supervisor at the end of the first term when you are first given a case. You will receive 25 sessions of case work supervision. You may be supervised individually for an hour a week or in pairs for two hours a week. You are

expected to audio record your sessions and make these recordings available to your supervisor to assist with your learning. For example, your supervisor can request you to bring a segment of the recording to supervision for discussion.

During the first semester you will also begin working on your Public Mental Health Interventions - this work is also supervised in small groups of three, 10 supervision sessions for one hour each. Supervision sessions will be spread over the duration of the year and will be schedule by your supervisor. The aim of supervision is to assist and guide you as you develop your intervention in collaboration with the chosen public health site.

Supervisors are required to complete an evaluation form three times a year commenting on your progress and attend three supervisors' meetings where your progress is discussed. These evaluations will be discussed with you. (See Guidelines for Supervisors booklet in the administrator's office/on RU Connected for further information)

**A note about supervision:** Although you will no doubt receive input from other psychologists and your peers on your cases in seminars and in case conferences, the allocated supervisor is responsible for your cases and you should under no circumstances conduct your cases in a way that disregards the guidance offered by this person. If you receive external guidance that is contrary to what your supervisor has been saying to you, you should discuss this with your supervisor.

### **Case conferences and ward round attendance at Fort England Hospital**

There are case conferences during the year when students and staff will present cases. All students will present at least one case. Early in the year, the format will be explained to you by the programme coordinator. These case conferences are an opportunity for you to practice your oral communication around cases, clinical thinking, and are formative learning experiences. The case conference is also an

opportunity to get input from others about your case. The case conference



schedule will be populated and made available during term 2.

Ward round attendance at Fort England Hospital is a good opportunity to observe how clinical psychologists and associated mental health professionals work. Notwithstanding the structured and multifaceted programme of FEH, you will have an opportunity to attend several different ward rounds. Ward round attendance will be reflected in the Google Calendar. You are also encouraged to continuously reflect on your experience at FEH as this would add to your overall growth as a clinical psychologist in training. In addition, you will also have an opportunity to conduct an assessment of a patient at Fort England and to present this case to refine your clinical skills. We consider the time spent at FEH as important to expose yourself to a more clinical environment as part of your learning.

### **Case work time**

You are responsible for making appointments with your clients and writing these appointment times in the Clinic Administrator's diary so that she can receive clients. We require that you do not make appointments for any reason within 15 minutes of the end of a scheduled seminar or supervision. We do not want students disengaging from the course material as they prepare mentally for a client appointment. To do justice to your clients you require space to re-orientate yourself from the academic task to the clinical task at hand, and to read case notes in preparation for seeing a client.

From the second term, some afternoons are kept free of seminars to ensure that there is time for your applied work. Your Saturday mornings should also be used for casework. It would be a good idea to get into the habit of reading and/or seeing clients on all Saturday mornings throughout the terms. You are expected to be available in Makhanda for client / course queries during office hours of a regular working week, and any deviation from this requires special motivation and permission from the Programme Coordinator.

## Registration with HPCSA

You will need to register with the HPCSA as a student psychologist in order to be able to start seeing clients. The onus is on you to complete this process timeously. The HPCSA will only register you as an intern psychologist in 2024 if you have been registered as a student psychologist the year prior. We do not take any responsibility for your registration status with the HPCSA.

## The Test Library

According to the Health Professions Act, 56 of 1974, only people who are appropriately registered as psychology practitioners may exercise control or have access to psychological tests. You are therefore legally obliged to take great care of the tests and ensure that access is strictly controlled. The test library should remain locked at all times. You may collect the key when you need to use a test. Once you have collected the test, you should return the key and sign the test out. When you sign the test out, you should check that none of the components are missing. Once you have signed for a test, you are confirming that you have all the components and accept liability for any pieces that go missing. Under no circumstances may you collect or return a test on behalf of anybody else.

Access to the library is restricted to certain times that will be communicated to you. Please plan around these times. As is the case with client records and other confidential material, any breaches of the rules about access to the test library are a serious disciplinary offence.

Please consult the following documents (on RU Connected or in the Clinic Administrator's office) which provide further information on the use of the test library: 'Test Library Hiring System' and 'Request to hire a psychological test from the test library'.

## Coursework Mark Structure

Course Mark Structure for Clinical Programme 2023		
Coursework & Exams <b>Total = 66%</b>	Class mark, which includes: <ul style="list-style-type: none"> <li>• Research Proposal (4%) <i>10 July</i></li> <li>• Class test: Psychopathology (4%) <i>5 June</i></li> <li>• Ethics Assignment (4%) <i>21 April</i></li> <li>• Oral Assessment 1 (4%) <i>9 June</i></li> <li>• Public Mental Health Assignment (4%) <i>6 October</i></li> </ul>	<b>20%</b>
	Exam Paper 1: Child Psychopathology, Assessment and Psychotherapy ( <i>23 October</i> )	<b>11,5%</b>
	Exam Paper 2: Adult Psychopathology, Assessment and Psychotherapy ( <i>30 October</i> )	<b>11,5%</b>
	Exam Paper 3: Clinical Psychology Professional Practice ( <i>6 November</i> )	<b>11,5%</b>
	Oral Examination 2 ( <i>13-14 November</i> )	<b>11,5%</b>
Research Thesis <b>Total = 34%</b>	A focused research project on a topic of relevance to Clinical Psychology.	

Given that this is a professional training program you need to demonstrate basic competency in all areas of the course. In order to pass this course, you must obtain an overall pass mark of 50% for the whole course. You must also obtain a subminimum pass mark of 50% for each of the following separately: (1) each of the three exam papers, (2) the class mark, (3) the November oral examination, and (4) the research dissertation

The oral examination takes the form of a panel interview in which you will present to a team of examiners including the Programme Co-ordinator and the External Examiner in November. Before the oral exam you will be given something to prepare. For example, in previous years students have been shown a video of an assessment interview and been asked to present the presenting problem, history,

diagnosis, case formulation and treatment plan. Information about the exact nature of your examination will be provided closer to the time, and the oral assessment in June acts as a good 'practice run'.

For written assignments, references must be cited and listed according to the format specified by the Publication Manual of the American Psychological Association. Please note that [plagiarism](#) is a serious offence, therefore, familiarise yourself with the mechanics of academic writing and referencing.

Submission of work should be done through RU Connected or email to the clinic administrator. Late submission will result in a deduction of marks, per university and departmental assessment policy. Requests for extensions must be applied for well in advance and be supported by appropriate documentation.

## Research

Students will attend seminars facilitated by the Centre for Postgraduate Studies to obtain the necessary information and skills to conduct their research project. These seminars are compulsory, and are a good way of meeting other postgraduate students and becoming part of the broader Rhodes community. In addition to these seminars, you will be allocated a research supervisor who will guide your research and the writing of your thesis. You will be required to submit drafts of the various sections of your research thesis throughout the course of the year as negotiated with your supervisor. This module will be assessed by the external examination of your research thesis. Additionally, your research proposal, which is due on 9 July 2023, will be marked by your supervisor and a second marker, and this mark will count towards your overall class mark.

You are required to conduct research and write a thesis that comprises a third (34%) of the total mark for the degree and is on a topic of relevance to Clinical Psychology. In consultation with your supervisor you can submit your thesis choosing one of the formats below:

o *Format A:* Students are required to submit a mini thesis, which should be approximately 50-80 pages of double-spaced text, excluding references and appendices.

**OR**

o *Format B:* Students are required to submit their research in the format of a publishable journal article. This article must adhere to all the requirements of a specific journal. The relevant journal guidelines must be provided to the examiners. In addition, the departmental ethics committee will also explicitly state if this is a feasible option to pursue.

Both formats are examined by two external examiners. Please consult the Humanities Higher Degrees Guide on the Rhodes University website for further information regarding the submission and examination process.

Please note that you will be expected to begin work on your dissertation early in the year to be able to present a well-prepared proposal to the Department's Research Proposal and Ethics Review Committee (RPERC) as soon as possible (this submission is a separate process to the summative assessment of your research proposal). You will also be required to submit an ethics application to the Rhodes University Ethical Standards Committee. Only once the proposal has been approved by the RPERC and you have ethical approval can you begin collecting data and proceeding with your research. It is a good idea to construct a timeline for the various components of your research and work on it consistently throughout your degree. You should aim to submit your proposal and ethical application to the RPERC and RUEEC respectively within the first semester or early in the second semester of your first year of your degree. Students who have a draft of their literature review and methodology and who have collected their data by the end of the first year are generally well on track to complete their thesis during their internship year. Please note that your time pressure (to complete your research so that you can write the Board exam - see section below) does not translate into your research supervisor's time pressure, so be sure to work consistently on your research. It is important to value your research from the very beginning of your degree - all applied psychologists are researcher-

practitioners, and the development of your research skills is as important as any other aspect of your training.



## Internship

After successful completion of your first year you proceed to your internship. Fort England Hospital has six internship spaces linked to Rhodes University and you are strongly advised to accept one of these places. Those who do not wish to work at Fort England Hospital are advised to begin their search for an internship elsewhere early in the year and to inform the Programme Co-ordinator early in the year. The University remains the collaborating university wherever you decide to complete your internship, and needs to endorse the suitability of your internship arrangements.

This program is linked to Fort England Psychiatric Hospital for the second-year internship component. **You are offered a provisional internship placement at the end of June provided that you have met all course requirements for the first semester.** Yet the placement of internships are still at the discretion of the department of health, therefore, internship placements may not always be guaranteed.

During the internship you will be evaluated quarterly by your supervisors who should discuss the report with you before placing it on file. This quarterly report is sent to the Programme Co-ordinator at Rhodes, as the supervising university. At the end of your internship your supervisors must decide whether you have reached a basic standard of professional competence. If they decide you have, they will sign you off as having completed the internship. If there are concerns about your standards of competence, you may be required to serve additional months until the required level of competence is reached. The Psychology Clinic must be in possession of four satisfactory internship reports from your internship year by the end of 2023. These



are required for the HOD to sign the form that you have completed your degree, as is the successful completion of your thesis.



Clinical candidates must write and pass the Professional Board for Psychology's examination before registering for a year of community service. Candidates are required to have passed their research thesis (not just submitted the thesis for examination) and all components of their coursework before being allowed to

register to sit for this Board exam which takes place two/three times a year.

To summarise then, **you cannot register as a community service psychologist until you have been awarded your masters degree AND passed the Board examination.** Once your community service year is complete, you may then register as a clinical psychologist in independent practice.

## Professional and Ethical Standards

### Stay in contact

The programme is a highly intensive professional training, and you are expected to adopt a professional attitude as a team member of the Department of Psychology and Rhodes Psychology Clinic. You are encouraged to see this year as a full-time job with regular working hours (08h00 to 17h00). Furthermore, you may need to be called in at short notice, for example, for a client in crisis, or a sudden change in the training programme. You therefore need to be contactable at all times during office hours when you are away from the Clinic or in the Department.

## Dress code

In keeping with your professional role as a training psychologist, you are expected to dress appropriately and professionally when at the Psychology Clinic or Psychology Department.

## Cordial and respectful relationships

Professionals must learn to work cordially with other professionals even though, at times, they may not agree with each other or even like each other very much. At all times class members are encouraged to view each other as co-professionals, and to work together in a supportive manner. Students should respect the fact that their fellow students will have their own interests, strengths and areas of vulnerability and learn to be flexible and empathic towards their peers.

## Confidentiality and ethics

From the very first term you are going to work as a professional and need to uphold the highest standards of ethics in respect of your case work, and this includes exercising the highest standards of discretion with respect to the confidentiality of the case material you will have access to. Although this is a universal requirement for Clinical Psychologists, it is particularly important in a small town such as Makhanda, and on a small university campus. Here are examples of the ways in which confidentiality can be broken quite unintentionally:

- You put a case file in your car and return to find that someone has broken into your car and taken it.
- You email a report and learn a few days later that the email was sent to the wrong person. Your confidential report has been read by the client's neighbour!
- You set off home with a pile of books and a case file. You inadvertently put the case file down in the Library and leave it there.
- You are worried about a case and you chat to one of your classmates about it while shopping at Pick 'n' Pay.
- You talk to a classmate in the corridor of the clinic about a difficult session you just had with a client only to find that the client is waiting at the door

because they forgot something in your office, and has heard the entire conversation.

These kinds of events can have serious consequences and could even lead to a complaint against you being made to the Professional Board which could lead to a disciplinary hearing. Take care that you are not the cause of any such unfortunate breaches of confidentiality. All confidential electronic documents (including audio files) must be password protected and deleted as soon as they are no longer needed. In addition, the recording equipment must always be used with confidentiality as a priority.

### Clinic procedures

Please be advised that there are specific rules and procedures about the use of the Clinic's office facilities, including the use of the test library, photocopy machine and telephone which will be explained to you at the start of the course. You are expected to adhere to these rules and procedures. There is a kitchen and tea room shared by students and staff at the Clinic, and you are asked to keep these shared spaces tidy.

### Clinic offices

You will be assigned a consulting room that you will share with one of your classmates. You should see clients, by arrangement with your office partner, in your consulting rooms, unless you need to use the playroom, or a larger venue for a couple, family or group, or if you need space to conduct psychometric testing. Along with a key to your office, you will be given keys to the clinic which you will be required to sign for and return at the end of the year. You are responsible for these; if you lose your keys, you may be liable for the cost of replacing the locks and everybody else's clinic keys.

### Personal therapy

Coursework and casework material often raise personal issues for students and therefore it is advisable, and strongly encouraged, to be in your own personal therapy during your masters year. As a student of the university you have access to

the student counselling centre for short term work or you may choose to see a psychologist in private practice. The Programme Co-ordinator will also facilitate accessing therapy and or mentorship at a reduced rate from local practitioners, where possible. A list of psychological services in Makhanda is available from the Clinic Administrator.

## Ongoing evaluation and feedback

You will receive feedback on how you are progressing in your training on an ongoing basis. Your co-ordinator will meet with you individually at the end of the first, second and fourth terms to provide you with feedback based on your performance in the various assessments, your engagement in seminars and your case conference presentations. In addition to this, your supervisors will let you know how you are developing in terms of the assessment, formulation and interventions of your cases and will write feedback reports for a committee chaired by the Programme Co-ordinator. These reports will be discussed with you. Also, you will be regularly writing intake reports, assessment reports and termination reports as part of your case work and you will receive feedback on these reports from your supervisors, as these reports typically have to be revised several times, especially the first two or three. If there are any serious concerns about how you are handling any aspects of the course these will be drawn to your attention by your supervisor and/or programme co-ordinator to give you a chance to address them.

Finally, you will also be asked regularly for written feedback on your experience of the seminars that make up the clinical programme. We ask that you provide this feedback honestly. The evaluation forms that you complete are taken seriously by the Programme Co-ordinator and lecturers concerned. You will also be asked about your experience of the programme in the individual feedback meeting with your Programme Co-ordinator that happens three times a year. In addition, a clinical psychology student representative will be elected early in the year, and the programme co-ordinator will meet every term with this student representative who should feel free to raise issues that perhaps you are not comfortable discussing personally and that pertain to the course.

## DP certificate

Attendance at seminars is compulsory and a DP requirement for this degree. If you need to miss any seminars for good reason, you must obtain permission from the Programme Coordinator in advance. Yet any non-attendance must be minimal and only in exceptional circumstances.

Before you can enter the examination process at the end of the year you must meet the DP (Duly Performed) requirements. For this training in clinical psychology, this means not only that you have attended all seminars and other components of the course and proved yourself academically competent, but also that you have shown yourself able to function professionally by approaching your work with commitment, working collegially with peers, forming meaningful relationships with clients, acting ethically, and acquiring the requisite skills in psychological assessment, psychological intervention and report writing.

This means that to meet these DP requirements which will allow you to take the written and oral examinations, you must demonstrate the following to your supervisors throughout the year: consistently satisfactory professional conduct (ethical integrity, reliability, consistency, conscientiousness and quality of professional relationships); practical competence in both psychological assessment and intervention in your casework and public mental health intervention. In addition, the satisfactory completion of all intake and assessment reports and termination reports along with the appropriate management of the case file is a DP requirement. Students will not be allowed to write exams if their case files are not complete.

If the Programme Co-ordinator has concerns about your performance in any of these areas, he will usually give you feedback as soon as possible to give you a chance to address the problem. If the problems are not addressed satisfactorily in response to feedback, you could eventually be asked to leave the course. In cases of gross ethical misconduct, your DP certificate will be summarily withdrawn, and you will be asked to leave the course immediately.

## Plagiarism

Plagiarism refers to the practice of presenting as your own work material which has been written by someone else. Any use of material that is derived from the work of another person constitutes plagiarism, unless the source is clearly acknowledged.

The University and the Department take the issue of plagiarism very seriously and all students in the Department are assumed to be aware of this. If there is any indication that your work is similar to, or based on, another person's work (whether this person is in the same class, from a previous year, from a published or unpublished manuscript or from the internet), this will be treated as plagiarism and steps taken against you and the person you have copied from. You are strongly encouraged to become acquainted with the Plagiarism Policy.

Students are strongly advised to put all written work that does not include confidential client information submissions through Turn-it-in, a text recognising program linked to RUconnected.

## The Time-Table

The time-table is available at the end of this booklet, and can be accessed via Google Calendar where any changes to the programme during the year will be recorded as well as the venue of the seminars. The web address will be provided to you. This is a very busy coursework programme, so good time management is essential.

## List of Policies and Guidelines relevant to the Clinical Psychology Masters Course

- Plagiarism Policy
- Selection Policy
- Student Impairment Policy
- Student Academic Support and Development Policy
- RU Connected Policy
- Guidelines for access to the Psychology Clinic during COVID-19 Lockdown
- Guidelines for casework supervision
- Research proposal guidelines

Test library hiring system  
Guidelines for the online storage of client information

Please familiarise yourselves with the above policies. Electronic copies of these policies are available on RU Connected. Hard copies (for reference) are available in the Clinic Administrator's office.

## HPCSA documents relevant to training clinical psychologists

Ethical Rules (Annexure 12)  
Ethical Rules of Conduct for Practitioners Registered under the Health Professions Act, 1974  
List of Classified Tests  
Minimum Training standards for the training of Clinical Psychology  
Policy Regarding Intern Psychologists (Form 160)  
The Examination Policy for Psychologists, Registered Counsellors and Psychometrists (Form 255).  
The revised Policy Document on Business Practices.  
The HPCSA Good Practice Guide (HIV).  
Regulations relating to the registration of psychology students  
Regulation relating to the registration of intern psychologists  
Regulations defining the scope of the profession of psychology  
Regulations relating to the indemnity cover of psychologists

Electronic copies of these documents are available on the HPCSA website. You are encouraged to familiarise yourself with them.

Mon	Tue	Wed	Thu	Fri
13 08:30 - Introduction to the Clinical 11:00 - Orientation to the Clinic - 14:00 - ADC Counselling Hub and	14 08:30 - Adult PAP: The Skilled Helper 11:00 - Adult PAP: The Skilled Helper	15 08:30 - Adult PAP: The Skilled Helper 11:00 - Adult PAP: The Skilled Helper 15:00 - CPGS Workshops	16 08:30 - Adult PAP: The Skilled Helper 11:00 - Adult PAP: The Skilled Helper 14:00 - Research Proposal: Prof	17 08:30 - ProfPac: Professional 17:00 - MC&C Welcome Drinks @
20 08:00 - Clinic Meeting: Dr Booysen	21 <b>Armed Forces Day</b> 08:30 - Cognitive Behaviour Therapy: 11:00 - Cognitive Behaviour Therapy: 14:00 - Cognitive Behaviour Therapy:	22 11:00 - Cognitive Behaviour Therapy: 14:00 - Cognitive Behaviour Therapy: 15:00 - CPGS Workshops	23 08:30 - Cognitive Behaviour Therapy: 11:00 - Cognitive Behaviour Therapy: 14:00 - Cognitive Behaviour Therapy:	24 08:30 - Cognitive Behaviour Therapy: 11:00 - Cognitive Behaviour Therapy: 14:00 - Cognitive Behaviour Therapy:
27 08:00 - Clinic Meeting: Dr Booysen	28 08:30 - Cognitive Behaviour Therapy: 11:00 - Cognitive Behaviour Therapy: 14:00 - Cognitive Behaviour Therapy:	1 08:30 - Adult PAP: Psychopathology: 11:00 - Public Mental Health: Alan 14:00 - Report Writing: Child	2 08:30 - Public Mental Health: Alan 11:00 - Public Mental Health: Alan	3 08:30 - Adult PAP: Psychopathology: 11:00 - Public Mental Health: Alan



Mon	Tue	Wed	Thu	Fri
<div>27</div> <div>08:00 - Clinic Meeting: Dr Booysen</div>	<div>28</div> <div>08:30 - Cognitive Behaviour Therapy:</div> <div>11:00 - Cognitive Behaviour Therapy:</div> <div>14:00 - Cognitive Behaviour Therapy:</div>	<div>1</div> <div>08:30 - Adult PAP: Psychopathology:</div> <div>11:00 - Public Mental Health: Alan</div> <div>14:00 - Report Writing: Child</div>	<div>2</div> <div>08:30 - Public Mental Health: Alan</div> <div>11:00 - Public Mental Health: Alan</div>	<div>3</div> <div>08:30 - Adult PAP: Psychopathology:</div> <div>11:00 - Public Mental Health: Alan</div>
<div>6</div> <div>08:00 - Clinic Meeting: Dr Booysen</div> <div>08:30 - Psychometric Theory and</div> <div>11:00 - Child screening battery: Prof.</div> <div>14:00 - Child screening battery: Prof.</div>	<div>7</div> <div>08:30 - Public Mental Health: Alan</div> <div>11:00 - Case Supervision</div>	<div>8</div> <div>08:30 - Conducting Interviews with</div> <div>11:00 - Conducting interviews with</div> <div>14:00 - School observations children:</div> <div>15:00 - CPGS Workshops</div>	<div>9</div> <div>08:30 - Public Mental Health: Dr</div> <div>11:00 - Public Mental Health: Dr</div> <div>14:00 - Public Mental Health: Alan</div>	<div>10</div> <div>08:30 - PMH: Conducting Workshops</div> <div>11:00 - Adult PAP: Psychopathology:</div>
<div>13</div> <div>08:00 - Clinic Meeting: Dr Booysen</div> <div>08:30 - Public Mental Health: Dr</div> <div>11:00 - Adult PAP: Report Writing: Dr</div> <div>14:00 - Ethics and Legislation in</div>	<div>14</div> <div>08:30 - Ethics and Legislation in</div> <div>11:00 - Case Supervision</div> <div>14:00 - Public Mental Health: Dr</div>	<div>15</div> <div>Public Mental Health: Supervision</div> <div>08:30 - School screening:</div> <div>15:00 - CPGS Workshops</div>	<div>16</div> <div>08:30 - School screening:</div>	<div>17</div> <div>08:30 - Adult PAP: Psychopathology:</div> <div>11:00 - Adult PAP: Case</div>
<div>20</div> <div>08:00 - Clinic Meeting: Dr Booysen</div> <div>11:00 - Case Supervision</div> <div>14:00 - Research Proposal: Prof</div>	<div>21</div> <div>Human Rights Day</div> <div>Human Rights Day - Public Holiday</div>	<div>22</div> <div>08:30 - Adult PAP: Psychopathology:</div> <div>11:00 - Ethics and Legislation in</div>	<div>23</div> <div>08:30 - Child emotional assessment:</div> <div>11:00 - Child emotional assessment:</div> <div>14:00 - Ethics and Legislation in</div>	<div>24</div> <div>Clinical Applications Open</div> <div>08:30 - Ethics and Legislation in</div>
<div>27</div> <div>Varsity Vacation</div>	<div>28</div>	<div>29</div>	<div>30</div>	<div>31</div>

Mon		Tue		Wed		Thu		Fri	
27		28		29		30		31	
Varsity Vacation									
3	08:00 - Clinic Meeting: Dr Booyesen 08:30 - Adult PAP: Psychodynamic 11:00 - Adult PAP: Psychodynamic	4	08:30 - Research Proposal: Prof 11:00 - Case Supervision 14:00 - Adult PAP: Psychodynamic	5	Public Mental Health: Supervision 08:30 - School screening: Feedback 15:00 - CPGS Workshops	6	08:30 - Adult PAP: Psychodynamic 11:00 - Adult PAP: Psychodynamic 14:00 - Adult PAP: Psychodynamic	7	Good Friday Good Friday - Public Holiday
10	Family Day Family Day - Public Holiday	11	08:30 - Adult PAP: Psychodynamic 11:00 - Case Supervision 14:00 - Adult PAP: Psychodynamic	12	08:30 - Adult PAP: Psychodynamic 11:00 - Adult PAP: Psychodynamic 14:00 - Adult PAP: Psychodynamic	13	08:30 - Adult PAP: Psychodynamic 11:00 - Adult PAP: Psychodynamic	14	08:30 - Adult PAP: Psychodynamic 11:00 - Adult PAP: Psychodynamic
17	08:00 - Clinic Meeting: Dr Booyesen 08:30 - Adult PAP: Psychodynamic 14:00 - Clinical Students at ADC	18	11:00 - Case Supervision 14:00 - Clinical Students at ADC	19	08:30 - Adult PAP: Psychopathology: 11:00 - Child PAP: Intellectual 14:00 - Child PAP: Intellectual	20	Public Mental Health: Supervision 08:30 - Solution-Focused 11:00 - Solution-Focused	21	Ethics Assignment Due 11:00 - Adult PAP: Psychopathology:
24	08:00 - Clinic Meeting: Dr Booyesen 11:00 - Research Proposal: Prof 14:00 - Clinical Students at ADC	25	11:00 - Case Supervision 14:00 - Clinical Students at ADC	26	08:30 - Adult PAP: Psychopathology: 11:00 - Child PAP: Intellectual 14:00 - Child PAP: Intellectual 15:00 - CPGS Workshops	27	Freedom Day Freedom Day - Public Holiday	28	

Mon	Tue	Wed	Thu	Fri
<div>1</div> <div>Public Holiday - Workers Day</div> <div>Workers' Day</div>	<div>2</div> <div>Clinical Applications - Closing Date</div> <div>11:00 - Case Supervision</div> <div>14:00 - Clinical Students at ADC</div>	<div>3</div> <div>08:30 - Adult PAP: Psychopathology:</div> <div>11:00 - Child Behaviour assessment:</div> <div>14:00 - Child Behaviour assessment:</div> <div>15:00 - CPGS Workshops</div>	<div>4</div> <div>Public Mental Health: Supervision</div> <div>11:00 - Measurement and</div> <div>14:00 - Case Conceptualization: Child</div>	<div>5</div> <div>11:00 - Adult PAP: Psychopathology:</div>
<div>8</div> <div>08:30 - Child Psychodiagnostics - Dr</div>	<div>9</div> <div>08:30 - Child Psychodiagnostics - Dr</div>	<div>10</div> <div>08:30 - Child Psychodiagnostics - Dr</div>	<div>11</div> <div>08:30 - Child Psychodiagnostics - Dr</div>	<div>12</div> <div>08:30 - Child Psychodiagnostics - Dr</div> <div>14:00 - Adult PAP: Psychopathology:</div>
<div>15</div> <div>08:00 - Clinic Meeting: Dr Booysen</div> <div>08:30 - Child Therapies: Phillipa</div> <div>11:00 - Child Therapies: Phillipa</div> <div>14:00 - Clinical Students at ADC</div>	<div>16</div> <div>08:30 - Child Therapies: Phillipa</div> <div>11:00 - Case Supervision</div> <div>14:00 - Clinical Students at ADC</div>	<div>17</div> <div>08:30 - Adult PAP: Psychopathology:</div> <div>08:30 - Child Therapies: Phillipa</div> <div>11:00 - Child Therapies: Phillipa</div> <div>14:00 - Child Therapies: Phillipa</div>	<div>18</div> <div>08:30 - Child Therapies: Phillipa</div> <div>08:30 - Personality Assessment:</div> <div>11:00 - Child Therapies: Phillipa</div> <div>11:00 - Personality Assessment:</div> <div>14:00 - Personality Assessment:</div> <div>15:00 - Public Mental Health</div>	<div>19</div> <div>08:30 - Adult PAP: Psychopathology:</div> <div>08:30 - Child Therapies: Phillipa</div> <div>11:00 - Child Therapies: Phillipa</div>
<div>22</div> <div>08:00 - Clinic Meeting: Dr Booysen</div> <div>08:30 - Neurocognitive Conditions -</div> <div>14:00 - Clinical Students at ADC</div>	<div>23</div> <div>08:30 - Neurocognitive Conditions -</div> <div>11:00 - Case Supervision</div> <div>14:00 - Clinical Students at ADC</div>	<div>24</div> <div>08:30 - Neurocognitive Conditions -</div> <div>11:00 - Adult PAP: Psychopathology:</div> <div>15:00 - CPGS Workshops</div>	<div>25</div> <div>Public Mental Health: Supervision</div> <div>08:30 - Neurocognitive Conditions -</div> <div>11:00 - Research Proposal: Prof.</div>	<div>26</div> <div>08:30 - Neurocognitive Conditions -</div>
<div>29</div> <div>08:00 - Clinic Meeting: Dr Booysen</div> <div>08:30 - Neurocognitive Conditions -</div> <div>14:00 - Clinical Students at ADC</div>	<div>30</div> <div>08:30 - Neuropsychological</div> <div>11:00 - Case Supervision</div> <div>14:00 - Clinical Students at ADC</div>	<div>31</div> <div>08:30 - Neuropsychological</div> <div>15:00 - CPGS Workshops</div>	<div>1</div> <div>08:30 - Neuropsychological</div>	<div>2</div> <div>08:30 - Neuropsychological</div>

Mon		Tue		Wed		Thu		Fri	
29	08:00 - Clinic Meeting: Dr Booysen 08:30 - Neurocognitive Conditions - 14:00 - Clinical Students at ADC	30	08:30 - Neuropsychological 11:00 - Case Supervision 14:00 - Clinical Students at ADC	31	08:30 - Neuropsychological 15:00 - CPGS Workshops	1	08:30 - Neuropsychological	2	08:30 - Neuropsychological
5	Neuropsych & Psychopathology Test 08:00 - Clinic Meeting: Dr Booysen 14:00 - Clinical Students at ADC	6	11:00 - Case Supervision 14:00 - Clinical Students at ADC 14:15 - Case Supervisors Meeting	7	Public Mental Health: Supervision 08:30 - Research Proposal: Prof 15:00 - CPGS Workshops	8	08:30 - Online Psychotherapy 11:00 - Online Psychotherapy	9	Mid-year: Oral Assessment
12	08:00 - Clinic Meeting: Dr Booysen 14:00 - Clinical Students at ADC	13	11:00 - Case Supervision 14:00 - Clinical Students at ADC	14	15:00 - CPGS Workshops	15		16	Varsity Vacation Youth Day
19	Varsity Vacation	20		21		22		23	
26	Varsity Vacation	27		28		29		30	

Mon		Tue		Wed		Thu		Fri	
26		27		28		29		30	
Varsity Vacation									
3		4		5		6		7	
Varsity Vacation									
10		11		12		13		14	
Research proposals due: 4pm		08:30 - Child Therapy: Mentalization- 11:00 - Case Supervision		08:30 - Intellectual Screening adults; 11:00 - Child Therapy: Mentalization- 11:00 - Intellectual assessment 14:00 - Intellectual assessment		Clinical selections - Notify Shortlisted Public Mental Health: Supervision 08:30 - Child Therapy: Mentalization- 11:00 - Child Therapy: Mentalization-		08:30 - Child Therapy: Mentalization- 11:00 - Child Therapy: Mentalization-	
17		18		19		20		21	
08:00 - Clinic Meeting: Dr Booysen 14:00 - Clinical Students at ADC		Nelson Mandela Day 11:00 - Case Supervision 14:00 - Clinical Students at ADC		08:30 - Intellectual assessment 11:00 - Intellectual assessment 15:00 - CPGS Workshops		08:30 - Measurement and		08:30 - Clinical Case Conference	
24		25		26		27		28	
08:00 - Clinic Meeting: Dr Booysen 08:30 - Evidence-based Practice in 11:00 - Evidence-based Practice in 14:00 - Clinical Students at ADC		11:00 - Case Supervision 14:00 - Clinical Students at ADC		08:30 - ProfPrac: Working in a MDT - 15:00 - CPGS Workshops		Public Mental Health: Supervision 08:30 - ProfPrac: Psychological		08:30 - Clinical Case Conference	
31		1		2		3		4	
Clinical Selections									
14:00 - Clinical Students at ADC		11:00 - Case Supervision 14:00 - Clinical Students at ADC							

Mon		Tue		Wed		Thu		Fri	
31			1		2		3		4
Clinical Selections									
14:00 - Clinical Students at ADC		11:00 - Case Supervision 14:00 - Clinical Students at ADC							
7		8		9		10		11	
08:00 - Clinic Meeting: Dr Booysen 08:30 - Working with marginalized 14:00 - Clinical Students at ADC	08:30 - Working with marginalized 11:00 - Case Supervision 14:00 - Clinical Students at ADC	National Women's Day Women's Day - Public Holiday		08:30 - ProfPrac: Management & 08:30 - Psychopharmacology: Prof				08:30 - Clinical Case Conference	
14		15		16		17		18	
08:00 - Clinic Meeting: Dr Booysen 08:30 - Working with marginalized 14:00 - Clinical Students at ADC	08:30 - Working with marginalized 11:00 - Case Supervision 14:00 - Clinical Students at ADC 14:15 - Case Supervisors Meeting	Public Mental Health: Supervision 08:30 - ProfPrac: Liaison & Referral - 15:00 - CPGS Workshops		08:30 - Psychopharmacology: Prof 11:00 - ProfPrac: Protocols &				08:30 - Clinical Case Conference	
21		22		23		24		25	
Varsity Vacation									
28		29		30		31		1	
08:30 - ProfPrac: Clinical Psychology 14:00 - Clinical Students at ADC	11:00 - Case Supervision 14:00 - Clinical Students at ADC	08:30 - Group Therapy: Dialectical 15:00 - CPGS Workshops	08:30 - ProfPrac: Working in					08:30 - Clinical Case Conference 11:00 - Group Therapy: Dialectical	

Mon		Tue		Wed		Thu		Fri	
28	08:30 - ProfPrac: Clinical Psychology 14:00 - Clinical Students at ADC	29	11:00 - Case Supervision 14:00 - Clinical Students at ADC	30	08:30 - Group Therapy: Dialectical 15:00 - CPGS Workshops	31	08:30 - ProfPrac: Working in	1	08:30 - Clinical Case Conference 11:00 - Group Therapy: Dialectical
4	08:00 - Clinic Meeting: Dr Booysen 14:00 - Clinical Students at ADC	5	11:00 - Case Supervision 14:00 - Clinical Students at ADC	6	08:30 - Group Therapy: Dialectical 15:00 - CPGS Workshops	7	08:30 - Child PAP: Forensic	8	08:30 - Clinical Case Conference 11:00 - Group Therapy: Dialectical
11	08:00 - Clinic Meeting: Dr Booysen 14:00 - Clinical Students at ADC	12	11:00 - Case Supervision 14:00 - Clinical Students at ADC	13	08:30 - Group Therapy: Dialectical 15:00 - CPGS Workshops	14	08:30 - Child PAP: Forensic	15	08:30 - Clinical Case Conference 11:00 - Group Therapy: Dialectical
18	08:00 - Clinic Meeting: Dr Booysen 14:00 - Clinical Students at ADC	19	08:30 - Child PAP: Forensic 11:00 - Case Supervision 14:00 - Clinical Students at ADC	20	Public Mental Health: Supervision 08:30 - Schema Therapy Workshop: 15:00 - CPGS Workshops	21	08:30 - Adult PAP: Forensic	22	08:30 - Adult PAP: Forensic
25	Day off for Heritage Day Heritage Day - Public Holiday	26	08:30 - Adult PAP: Forensic 11:00 - Case Supervision	27	15:00 - CPGS Workshops	28	08:30 - Adult PAP: Forensic	29	08:30 - Adult PAP: Forensic

Mon	Tue	Wed	Thu	Fri
25 Day off for Heritage Day Heritage Day - Public Holiday	26 08:30 - Adult PAP: Forensic 11:00 - Case Supervision	27 15:00 - CPGS Workshops	28 08:30 - Adult PAP: Forensic	29 08:30 - Adult PAP: Forensic
2 08:00 - Clinic Meeting: Dr Booyesen	3 11:00 - Final - Case Supervision 14:15 - Case Supervisors Meeting	4 08:30 - Managing Private Practice:	5	6 PMH - Assignment Due
9	10	11	12	13 Clinical Case Files To be Submitted
16	17	18	19	20
06:00 - Swot week				Exams
23	24	25	26	27
Exams				
Paper 1 - Child PAP				
30	31	1	2	3
Exams				
Paper 2 - Adult PAP				



