

Experience of time

1. Use the pendulum by swinging it sideways and count in units of 1.

a. Keep your breath in for a count of 10.

How does it feel?

b. Shake hands with all the members in your group for a count of 15.

How does it feel?

c. Close your eyes for a count of 20.

How does it feel?

d. Hop on one leg for a count of 30.

How does it feel?

e. Write different sums that will give you the answer 60 for a count of 45.

How does it feel?

2. Order the events of the day in the order that you do them

School ends; wake up and wash; eat during break; sport practice; go to school; go to bed; do homework; eat breakfast

1.

2.

3.

4.

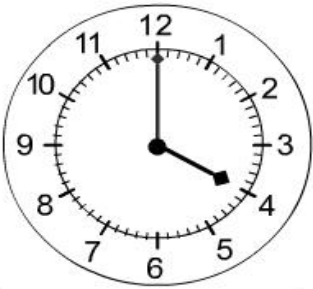

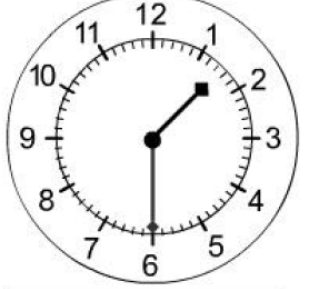



5.

6.

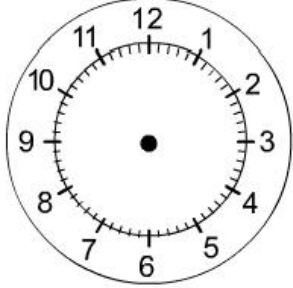
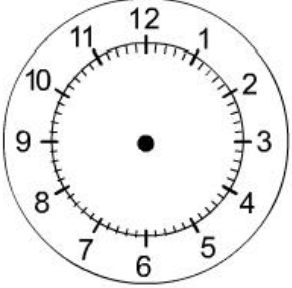
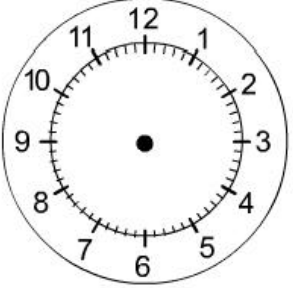
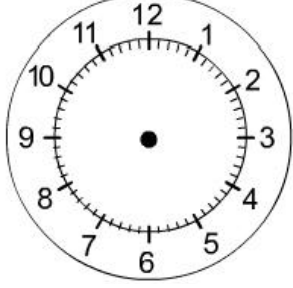
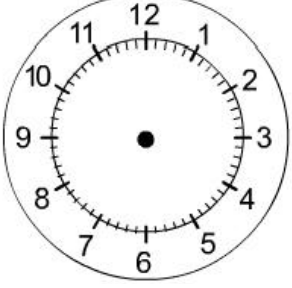
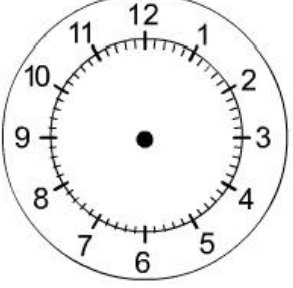
7.

8.

1. Say what the time is on each of these clocks:

2. Draw the time on the clock

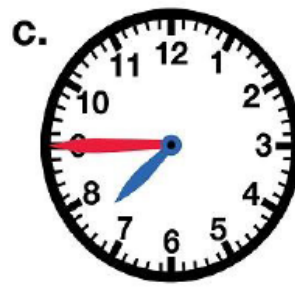
 Twelve o'clock	 Half past one	 Quarter past four
 Twenty minutes past eight	 40 min past six	 Quarter to one

Write the time in two different ways. An example is given.

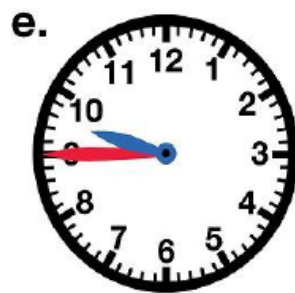


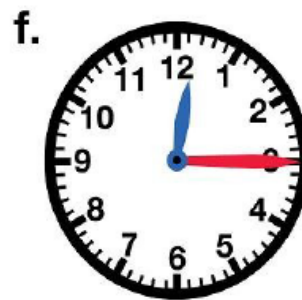
15 minutes past 2
Quarter past two



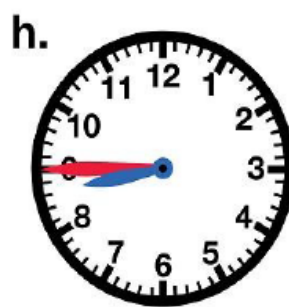


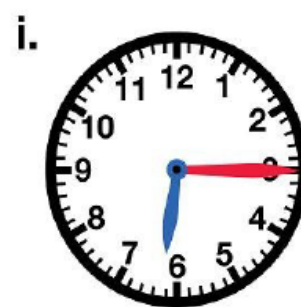












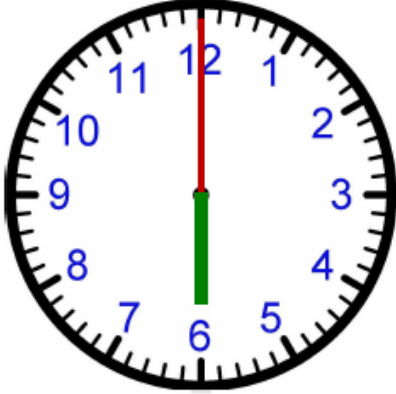


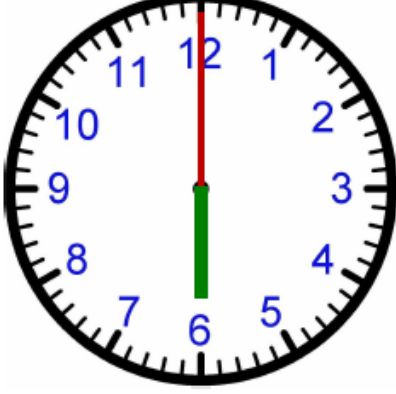








Record the time that has passed (whole hours)

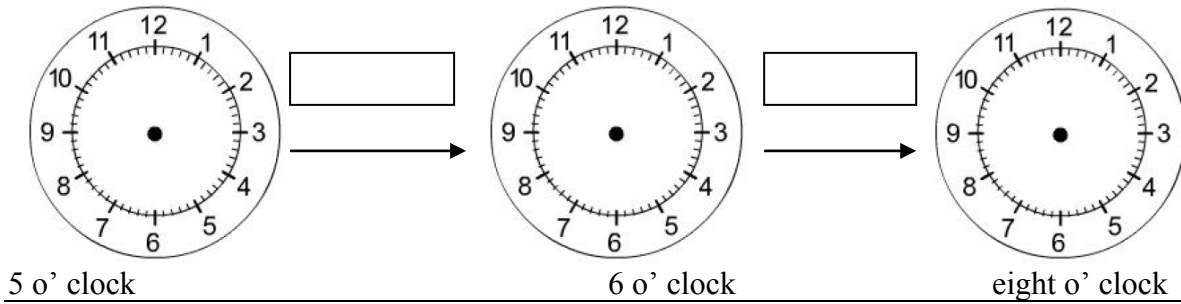
1.	<div style="display: flex; justify-content: space-around; align-items: flex-start;"> <div style="text-align: center;"> <p>Clock A</p>  </div> <div style="text-align: center;"> <p>Clock B</p>  </div> </div> <p>What is the time on A? How much time had passed from clock A and clock B?</p>
2.	<div style="display: flex; justify-content: space-around; align-items: flex-start;"> <div style="text-align: center;"> <p>Clock A</p>  </div> <div style="text-align: center;"> <p>Clock B</p>  </div> </div> <p>What is the time on A? How much time had passed from clock A and clock B?</p>
3.	<div style="display: flex; justify-content: space-around; align-items: flex-start;"> <div style="text-align: center;"> <p>Clock A</p>  </div> <div style="text-align: center;"> <p>Clock B</p>  </div> </div> <p>What is the time on A? How much time had passed from clock A and clock B?</p>

4.	<div data-bbox="592 172 703 203">Clock A</div> <div data-bbox="408 226 805 618">A circular clock face with numbers 1 to 12. The hour hand (green) points exactly to 6, and the minute hand (red) points exactly to 12.</div> <div data-bbox="167 624 879 696">What is the time on A? How much time had passed from clock A and clock B?</div> <div data-bbox="967 172 1078 203">Clock B</div> <div data-bbox="852 226 1249 618">A circular clock face with numbers 1 to 12. The hour hand (green) points exactly to 7, and the minute hand (red) points exactly to 12.</div> <div data-bbox="914 624 1209 656">What is the time on B?</div>
5.	<div data-bbox="676 734 788 766">Clock A</div> <div data-bbox="402 788 799 1180">A circular clock face with numbers 1 to 12. The hour hand (green) points exactly to 2, and the minute hand (red) points exactly to 12.</div> <div data-bbox="167 1187 879 1258">What is the time on A? How much time had passed from clock A and clock B?</div> <div data-bbox="1058 734 1169 766">Clock B</div> <div data-bbox="847 788 1244 1180">A circular clock face with numbers 1 to 12. The hour hand (green) points exactly to 6, and the minute hand (red) points exactly to 12.</div> <div data-bbox="914 1187 1209 1218">What is the time on B?</div>
6.	<div data-bbox="592 1296 703 1328">Clock A</div> <div data-bbox="408 1350 805 1742">A circular clock face with numbers 1 to 12. The hour hand (green) points exactly to 4, and the minute hand (red) points exactly to 12.</div> <div data-bbox="167 1749 879 1821">What is the time on A? How much time had passed from clock A and clock B?</div> <div data-bbox="967 1296 1078 1328">Clock B</div> <div data-bbox="852 1350 1249 1742">A circular clock face with numbers 1 to 12. The hour hand (green) points exactly to 8, and the minute hand (red) points exactly to 12.</div> <div data-bbox="914 1749 1209 1780">What is the time on B?</div>

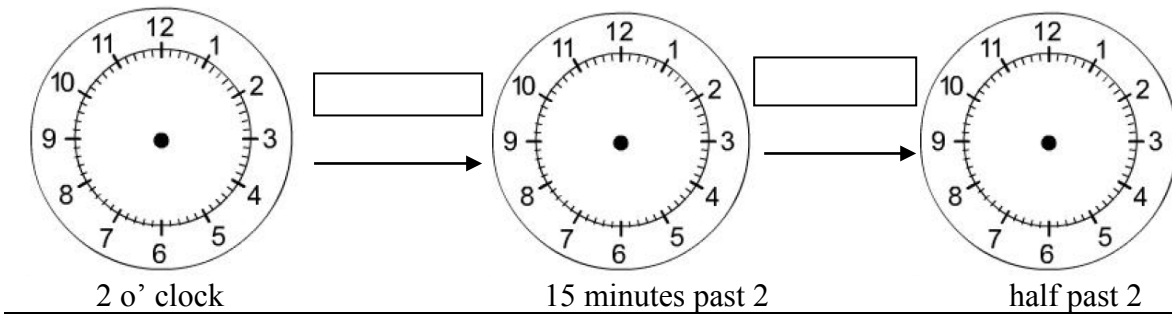
Passing of time

Draw the time on the three analogue clocks. Say how much time has passes between each clock pair.

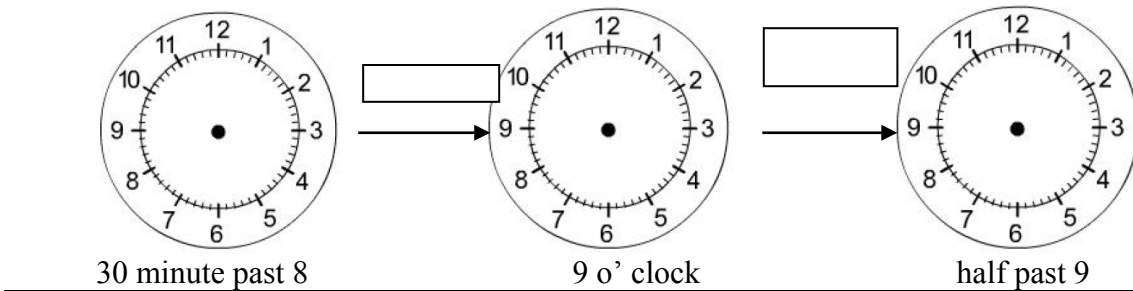
a.



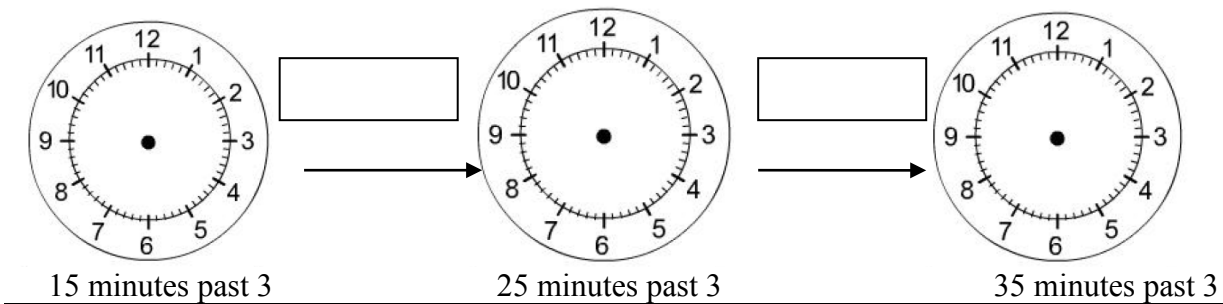
b.



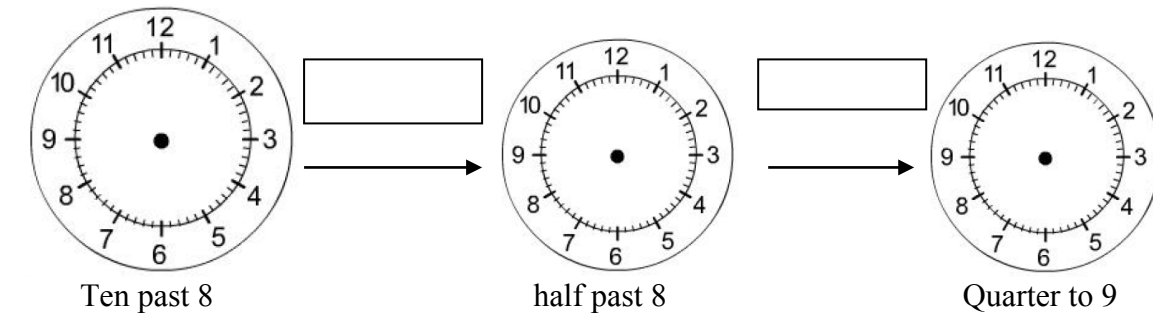
c.



d.



e.



Clock configurations

1. Make a paper plate clock and first place the short and then the long hand correctly on the paper plate face.

- a.) The **short** hand shows the _____ indicator.
- b.) The **long** hand shows the _____ indicator.
- c.) There are _____ primary (main) divisions on the clock's face.

2. Complete the following questions.

- a.) The number 1 on the clock face counts 1 hour and also _____ minutes.
- b.) The number 3 on the clock face counts 3 hours and also _____ minutes.
- c.) The number 6 on the clock face counts 6 hours and also _____ minutes.
- d.) The number 9 on the clock face counts 9 hours and also _____ minutes.
- e.) The number 12 on the clock face counts 12 hours and also _____ minutes.

Activity

1.) I leave the house at seven o'clock and return at quarter past 9.

How long was I away?

2.) We leave home at 8 30 the morning and arrive at 10 o'clock in Port Elizabeth.

How long did we travel to Port Elizabeth?

3.) The "Anaconda" movie on TV starts at 8 o'clock. It is now quarter to 8.

How long will I wait for the movie to start?

4.) The "Oh Schucks" film on TV starts at seven thirty. It plays for 1 hour and 15 minutes.

What time will the film stop?

5.) My schedule for my favourite TV programs.

Work out when the programs will end.

MY TV PROGRAM	PROGRAM STARTS	PROGRAM STOPS	HOW LONG (DURATION)
Dragon Ball Z	Half past four		35 minutes
Ben 10	Quarter to 5		45 minutes
Phineas and Pherb	Quarter past 3		25 minutes

6.) A taxi rooster.

Work out the time the taxi leaves (departs)

TAXI LEAVES AT (DEPARTS)	TAXI ARRIVES AT	JOURNEY TIME
	Two o'clock	45 minutes
	3:30pm	1 hour
	Seven thirty	1 hour and 15 minutes