



RHODES UNIVERSITY  
Where leaders learn

# Rhodes University Facts & Figures

2022

# The Vice-Chancellor

Professor Sizwe Mabizela is passionate about making a difference in the lives of ordinary people.

Professor Mabizela enjoys a solid standing as a mathematician and his professional global contribution to the discipline of Mathematics is considerable. He has, amongst others, been an FRD/NRF-rated researcher for 13 years.

In his illustrious academic career, he has held the positions of Associate Professor and Deputy Head of Mathematics and Applied Mathematics at the University of Cape Town; Visiting Professor of Mathematics at the University of Zimbabwe; Professor and Head of Department of Mathematics (Pure and Applied) at Rhodes University; and Deputy Vice-Chancellor: Academic and Student Affairs at Rhodes University.

Professor Mabizela enjoys the support and confidence of the Council to strengthen the University's position as a distinct and distinctive institution that provides outstanding education to young people of our country and beyond. He is a firm believer that Rhodes University is key in generating and disseminating knowledge of high quality, advancing human understanding and wisdom and building and sustaining a better society for all.

# Table of Contents

Graduation	4
Enrolment	5
Academic Offering	6
Research Excellence	6
Staff	7
Enrolment Plan	8
Infrastructure Projects	9
Community Engagement	10

The University's **VISION** is to be an **OUTSTANDING, NATIONALLY, and INTERNATIONALLY RESPECTED ACADEMIC INSTITUTION**, which proudly affirms its **AFRICAN IDENTITY**, and **COMMITMENT** to:



DEMOCRATIC IDEALS



ACADEMIC FREEDOM



RIGOROUS SCHOLARSHIP



SOUND MORAL VALUES



SOCIAL RESPONSIBILITY

# Graduation

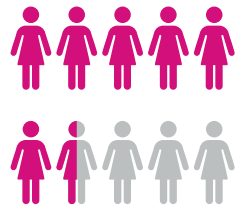
2021



Female

**64%**

1341 (64%) graduates were female

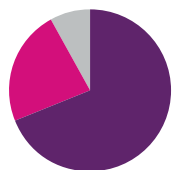


Postgraduates

**40%**

855 (40%) graduates were postgraduates

**100** Master's degrees  
**34** PhD degrees



Bachelor's degrees

**69%** completed their undergraduate bachelor's degrees in record time

**23%** completed their undergraduate bachelor's degrees in one extra year

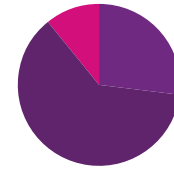


# Enrolment

2021



RHODES UNIVERSITY  
Where leaders learn



Rhodes University is the smallest university in South Africa with a total number of 8477 students



**3300**

Rhodes University has a strong residential system and over 3300 students stayed on campus in 2021



The University has

**13**

halls including the Gavin Reilly Postgraduate Village which has self-catering facilities

and

**54**

residences

where over

**9000**

meals are served daily

# Academic Offering

2021

# Staff

2021



1381  
Permanent Staff Members



73% Support Staff



27% of Academic Staff



14% Professors



24% Associate Professors



25% Senior Lecturers

1:15

We have the most favourable academic staff-to-student ratio of 1:15, among South African universities

# Research Excellence

2021



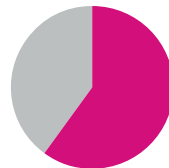
Rhodes University is home to 14 SARChI Chairs and enjoys the associated hosting of a 15<sup>th</sup> chair within its associated institute SAIAB (South African Institute of Aquatic Biodiversity)



Rhodes University has a high proportion of NRF-rated researchers on the academic staff, and this ensures that the quality of scholarly work within the University is of excellent standards



The University continues to produce research publications at a higher rate than the national average as published by the Department of Higher Education, Science and Technology



60%

of the academic staff have PhDs

# Enrolment Plan

2020-2025

# 2020-2025

Student enrolment projection for 2020 - 2025 is between:

# 8714

in 2020

# 9500

by 2025

Rhodes University intends to maintain its relatively high proportion of postgraduate students at about 30% of the total student headcount as a research-intensive university



The University also plans to maintain its highest proportion of student body in the Liberal Arts and Humanities (43% in 2025) followed by Science which will account for 25%



Liberal Arts and Humanities



Science

In pursuit of improved human capacity and in particular development of women the gender composition in the enrolment plan is left at 59% female and 41% male

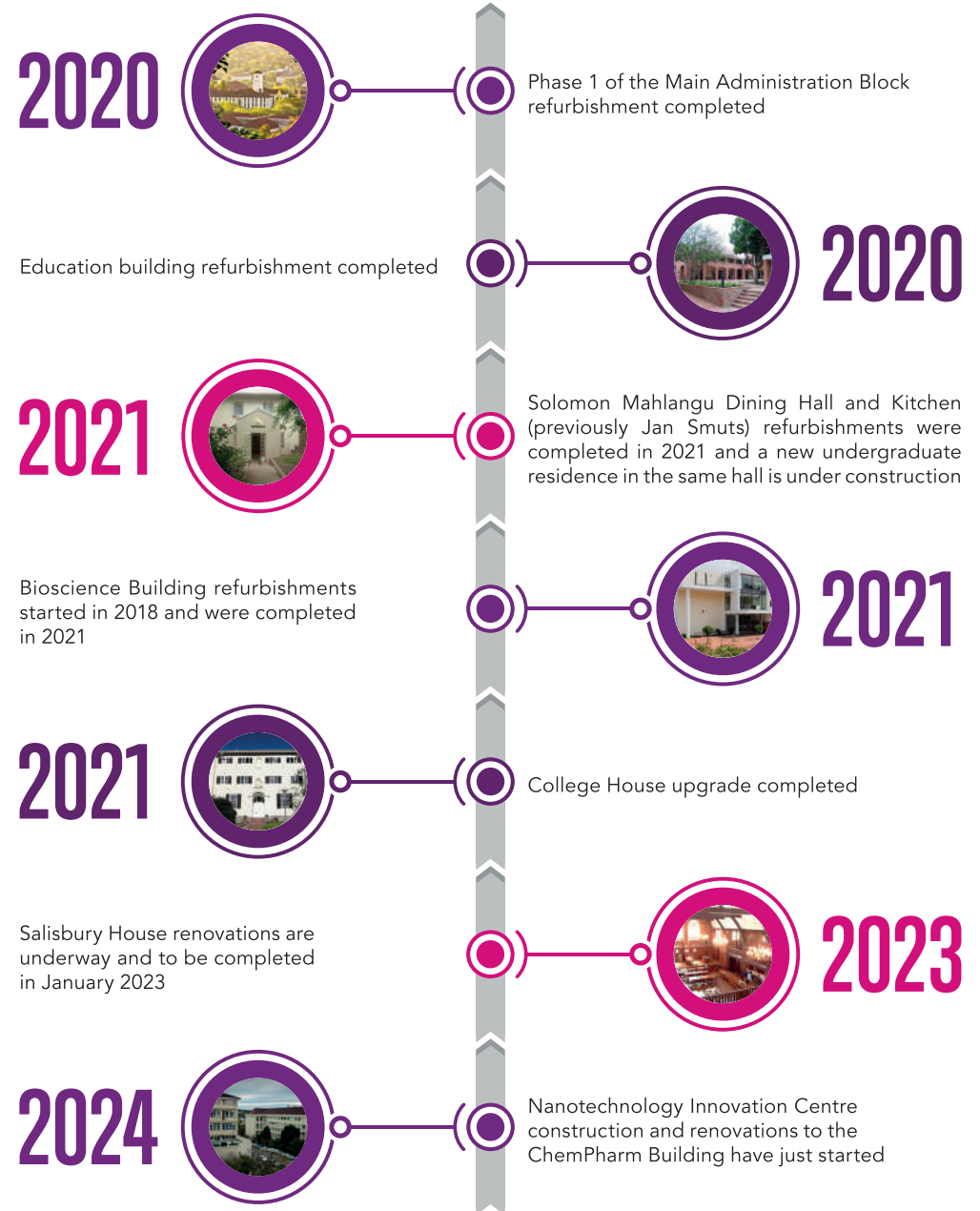


# Infrastructure Projects

2020, 2021 and 2022



RHODES UNIVERSITY  
Where leaders learn



Community Engagement is one of the key pillars of the University and it is divided into eight broad categories:



Citizenship



Engaged in scholarship and research



Service learning



Community hubs

Community-university partnerships



Social innovation



Pathways to the Future (VC's Education Initiative)



Siyakhana@Makana



Each of the categories listed above has several initiatives which are championed by the University students in collaboration with the broader community of Makhanda

One of the most successful initiatives to date is Pathways to the Future (VC's Education Initiative)

## Successes of Pathways to the Future



Substantial increase in bachelor passes at four no-fee-paying schools which are part of the VC's Initiative from 51 in 2016 to 167 in 2021



City-wide improvement in matric pass rates



Enabling academically deserving local students from the township schools to gain access to Rhodes University with a significant increase in admissions into the university from 11 in 2012 to 138 in 2022



The birth and scaling of a bridging programme for Makhanda youth



Provides a platform that encourages research on volunteerism and community engagement



Development of school leadership in collaboration with the University Business School



Building a community of good teaching practices in basic education



RHODES UNIVERSITY  
*Where leaders learn*

Alumni House, Lucas Avenue  
Makhanda, 6139

PO Box 94  
Makhanda, 6140

[communications@ru.ac.za](mailto:communications@ru.ac.za)

[www.ru.ac.za](http://www.ru.ac.za)