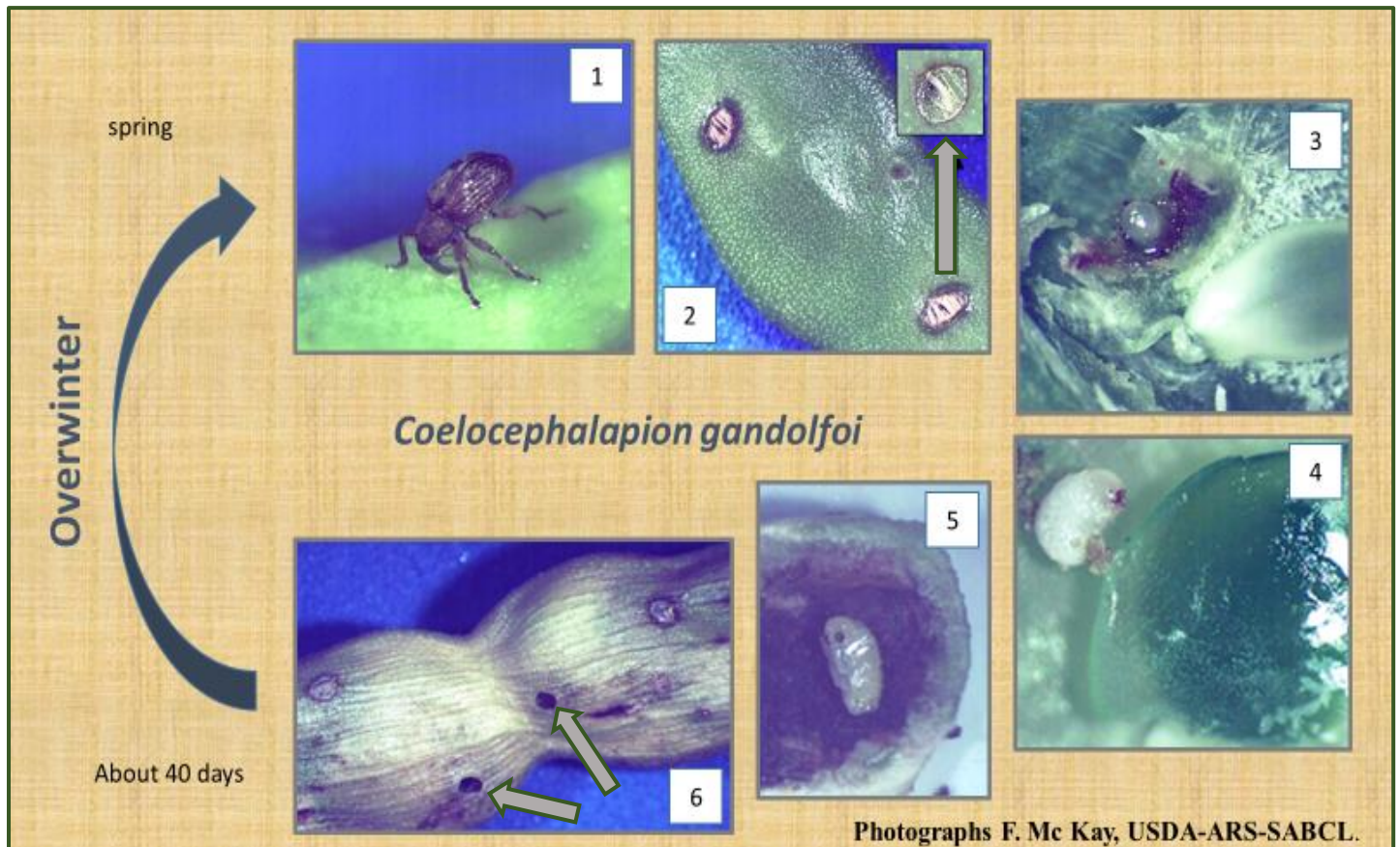


# The life cycle of *Coelocephalapion gandolfoi* (Coleoptera: Brentidae) – a potential agent for prosopis in South Africa



- 1) adults feed and lay eggs on young green pods in spring
- 2) eggs are laid inside the pod and the entrance scar covered
- 3) each egg is laid next to a young seed
- 4) after hatching, the larva eats the developing seed
- 5) the larva pupates inside the husk of the seed
- 6) adults emerge by making a small round hole in the pod wall (arrows)

Development from egg to adult takes about 40 days but eggs are only laid the following spring (when young green pods become available again).



For further information contact: Carien Kleinjan: [Catharina.kleinjan@uct.ac.za](mailto:Catharina.kleinjan@uct.ac.za) or Philip Ivey: [p.ivey@ru.ac.za](mailto:p.ivey@ru.ac.za)